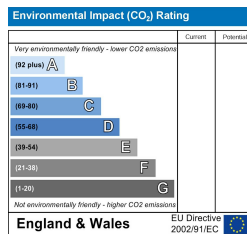
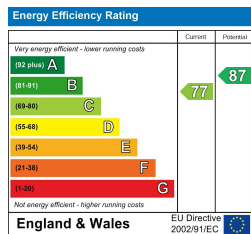
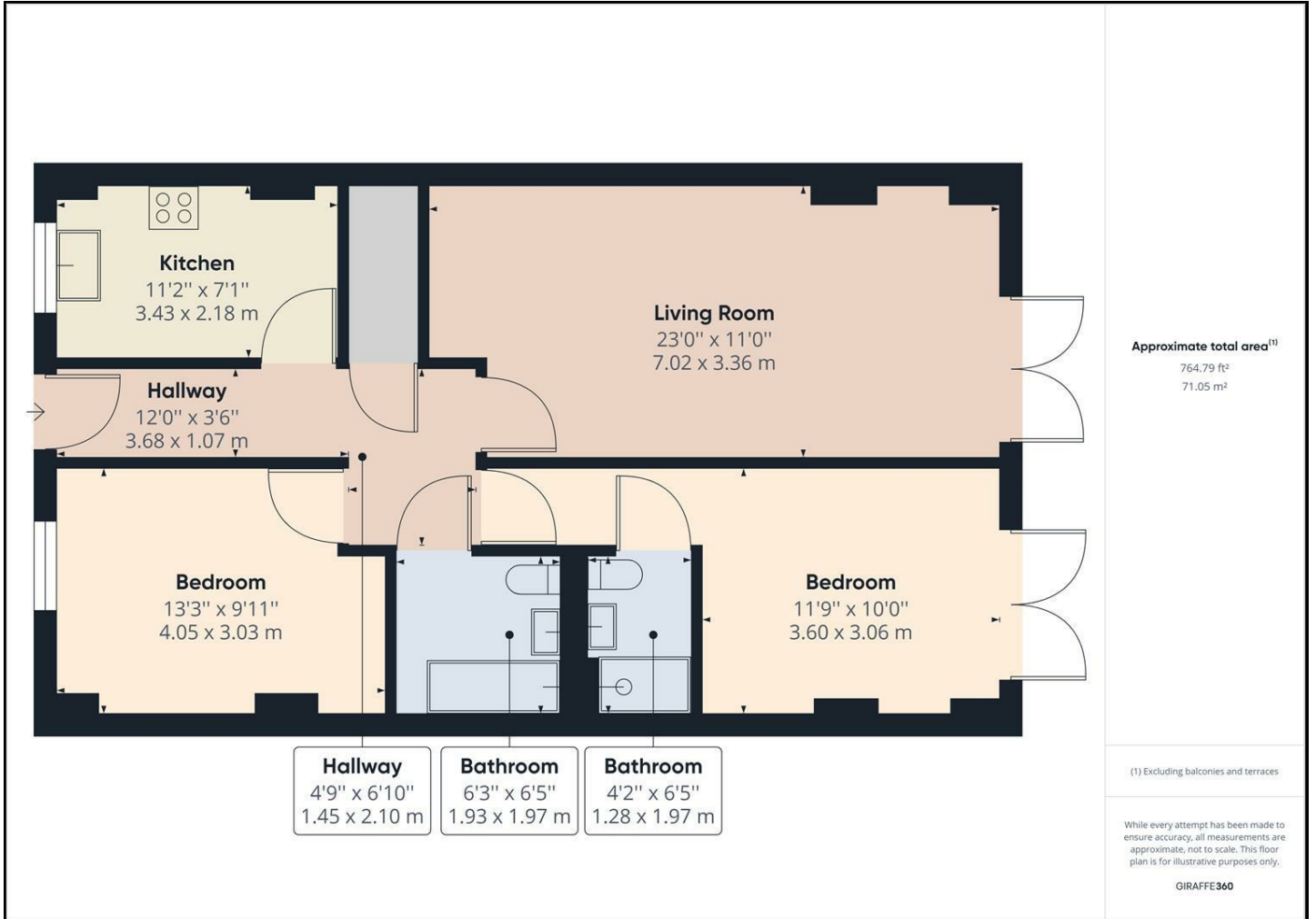




## **Apt 81 Block B, Anchor Point, Bramall Lane, Sheffield S2 4RR** **£825 Per Calendar Month**

A particularly well proportioned two double bed roomed, third floor apartment forming part of this ideally located modern purpose built development on the edge of Sheffield City Centre. Benefitting from a double width balcony with lovely southerly aspect, the apartment has recently been re-carpeted throughout and briefly comprises: Communal entrance, entrance hallway, fitted kitchen, large living room, master bedroom with en-suite shower room, double bedroom two, separate bathroom. Outside there is a double-width balcony and secure communal grounds. **NO PARKING.**

**FURNISHED 6-12 MONTH TENANCY. Restrictions - No pets or smokers. Energy Efficiency Rating C. Council Tax Band B**



Banner Cross  
Hathersage  
Bakewell  
Matlock  
www.saxtonmee.co.uk

949-951 Ecclesall Road, Sheffield S11 8TN  
3 Bank View, Main Road, Hathersage S32 1BB  
Matlock Street, Bakewell DE45 1EE  
27 Causeway Lane, Matlock, DE4 3AR

T: 0114 268 3241  
T: 01433 650009  
T: 01629 815307  
T: 01629 828250

E: bannercross@saxtonmee.co.uk  
E: hathersage@saxtonmee.co.uk  
E: bakewell@saxtonmee.co.uk  
E: matlock@saxtonmee.co.uk