



Meadowside , Newhaven, Buxton SK17 0DZ



Lettings

# Meadowside

## Newhaven

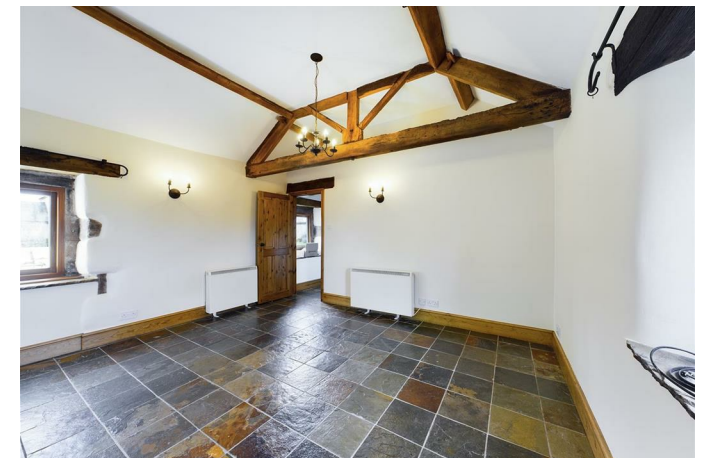
Per Calendar Month

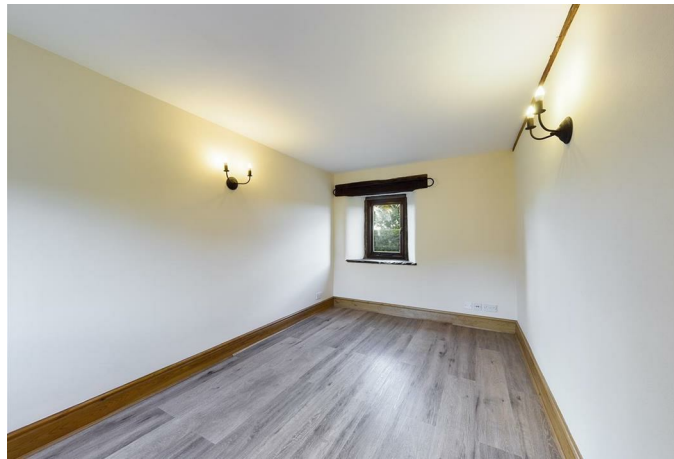
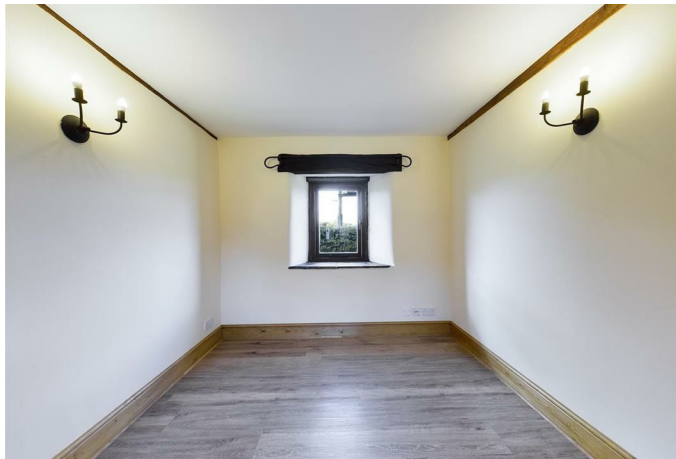
# £800 Per Calendar

Situated in this beautiful Derbyshire Village is this stunning three bedroom cottage. Ideally placed within a short commute of both Sheffield and Manchester, plus close to the local shops, school, and other local amenities.

The property comprises internally; living room and surround, kitchen with a range of units, master double bedroom, with a further two bedrooms, shower room. The property benefits from storage heaters, double glazing throughout and off road parking. Communal gardens. Please Note: The property is completely unfurnished and appliances are not included within the rental.

UNFURNISHED 6 or 12 MONTH TENANCY. Restrictions: No smokers or pets. Energy Efficiency Rating Band D. Council Tax Band C.





While we endeavour to make our sales particulars fair, accurate and reliable, they are only a general guide to the property and, accordingly, if there is any point, which is of particular importance to you, please contact the relevant office. The Agents have not tested any apparatus, equipment, fittings or services and so cannot verify they are in working order. The buyer is advised to obtain verification. Please note all the measurement details are approximate and should not be relied upon as exact. All plans, floor plans and maps are for guidance purposes only and are not to scale. Under no circumstances should they be relied upon as exact or for use in planning carpets and other such fixtures, fittings or furnishings. YOUR HOME IS AT RISK IF YOU DO NOT KEEP UP REPAYMENTS ON A MORTGAGE OR OTHER LOAN SECURED ON IT. 'A Life Assurance policy may be requested.' 'Written Quotations of credit terms available on request.'

Banner Cross

T: 0114 268 3241

E: [bannercross@saxtonmee.co.uk](mailto:bannercross@saxtonmee.co.uk)

[www.saxtonmee.co.uk](http://www.saxtonmee.co.uk)

Hathersage

T: 01433 650009

E: [hathersage@saxtonmee.co.uk](mailto:hathersage@saxtonmee.co.uk)

Bakewell

T: 01629 815307

E: [bakewell@saxtonmee.co.uk](mailto:bakewell@saxtonmee.co.uk)

Matlock

T: 01629 828250

E: [matlock@saxtonmee.co.uk](mailto:matlock@saxtonmee.co.uk)



Lettings