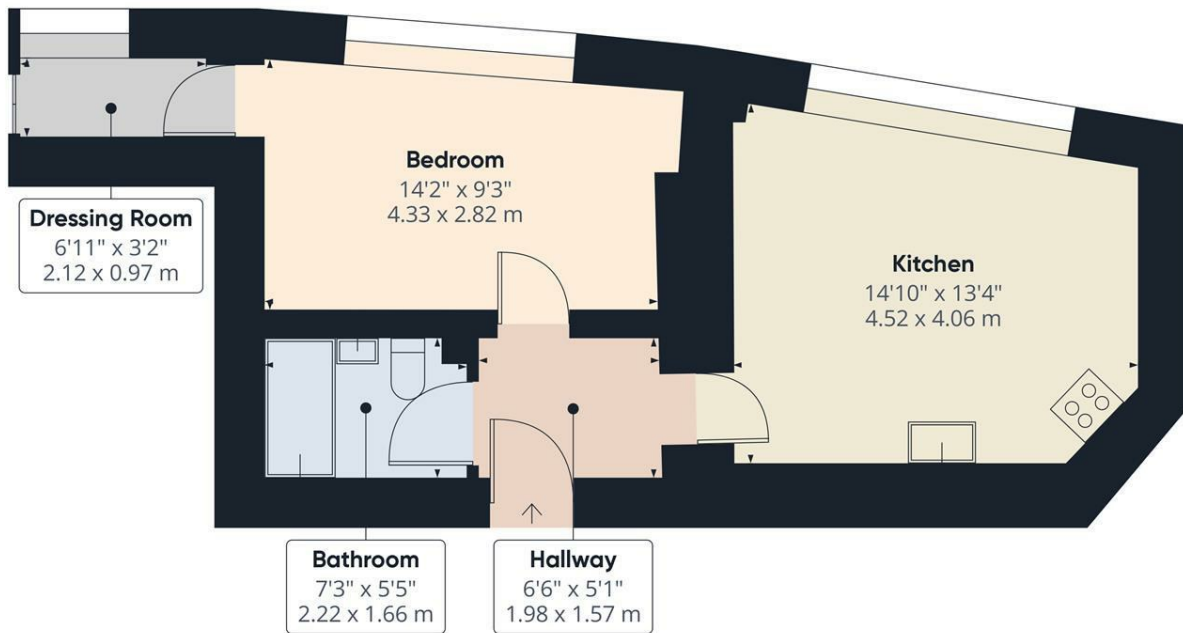




### **Apt 4 Pinstone Chambers Pinstone Street, Sheffield S1 2HZ £700 Per Calendar Month**

A one bedroom first floor apartment, situated opposite the award winning Peace Gardens in the heart of Sheffield city centre. The high quality accommodation comprises: open plan living area with contemporary fitted kitchen with integrated appliances to include: washing machine, fridge freezer, electric oven and hob. Good sized double bedroom, dressing room and luxury bathroom with shower. UNFURNISHED 6-12 MONTH TENANCY. Restrictions: No smokers, pets or students. Energy Efficiency Rating C. Council Tax Band A

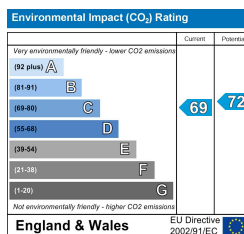
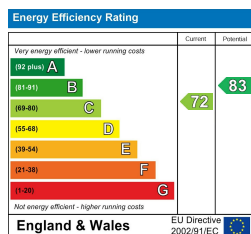


Approximate total area<sup>1)</sup>  
426 ft<sup>2</sup>  
39.58 m<sup>2</sup>

(1) Excluding balconies and terraces

While every attempt has been made to ensure accuracy, all measurements are approximate, not to scale. This floor plan is for illustrative purposes only.

GIRAFFE 360



Banner Cross  
Hathersage  
Bakewell  
Matlock  
www.saxtonmee.co.uk

949-951 Ecclesall Road, Sheffield S11 8TN  
3 Bank View, Main Road, Hathersage S32 1BB  
Matlock Street, Bakewell DE45 1EE  
27 Causeway Lane, Matlock, DE4 3AR

T: 0114 268 3241  
T: 01433 650009  
T: 01629 815307  
T: 01629 828250

E: bannercross@saxtonmee.co.uk  
E: hathersage@saxtonmee.co.uk  
E: bakewell@saxtonmee.co.uk  
E: matlock@saxtonmee.co.uk