

£825 pcm

Lime Grove, March, Cambridgeshire PE15 8JG



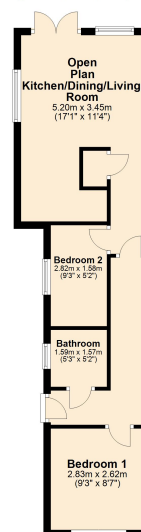
To arrange a viewing call us now on 01354 694900

Deposit £951

Available mid August, this two bedroom detached bungalow is well presented throughout and has a good size garden plus off road parking to the front.

The accommodation comprises open plan kitchen/dining/living room, modern bathroom and two bedrooms.

Ground Floor
Approx. 35.6 sq. metres (383.6 sq. feet)



Total area: approx. 35.6 sq. metres (383.6 sq. feet)

£825 pcm

Lime Grove, March, Cambridgeshire PE15 8JG



OPEN PLAN KITCHEN/DINING/LIVING ROOM

5.20m (17'1") x 3.45m (11'4")

The kitchen area is fitted with a modern range of wall and base units housing single electric oven and four ring hob with extractor over, plumbing for washing machine and space for fridge freezer, window to side. At the living/dining end, there is a window to rear and double doors leading out to the rear garden.



BEDROOM 1

2.83m (9'3") x 2.62m (8'7")

Window to front.

BEDROOM 2

2.82m (9'3") x 1.58m (5'2")

Window to side.

BATHROOM

Fitted with a panelled bath with electric shower over, low level WC and hand wash basin set within vanity unit. Window to side.



OUTSIDE

The front garden is open plan and laid to gravel providing off road parking. To the rear, the garden is laid mainly to lawn with patio area and storage shed.

SERVICES

Mains gas, electricity, water and drainage. The property has gas fired central heating.

INITIAL LENGTH OF TENANCY

6 months

Fenland District Council Tax band - A

Energy rating - D



Ellis Winters & Co 20 Market Hill, Chatteris, Cambridgeshire, PE16 6BA

Tel: 01354 694900 Email: info@elliswinters.co.uk www.elliswinters.co.uk