

£1,150 pcm

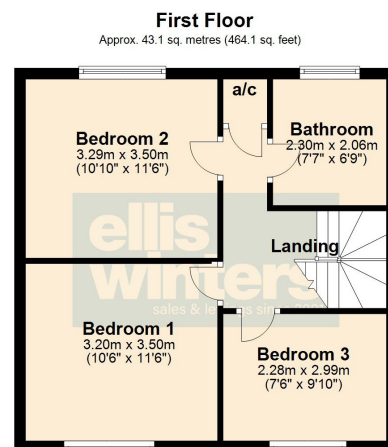
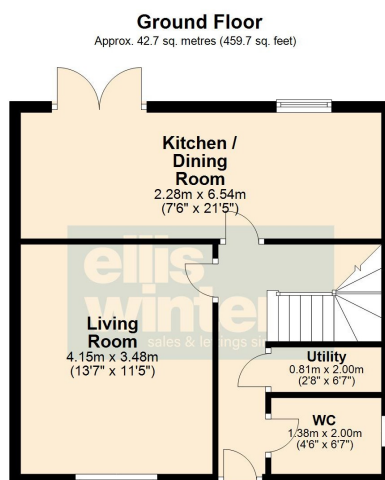
The Elms, Chatteris, Cambridgeshire PE16 6JW



To arrange a viewing call us now on 01354 694900

Deposit £1,326

Don't miss out on this superb rental opportunity! Available from MAY, this delightful THREE-BEDROOM family home offers a perfect blend of modern comfort and practical living. The spacious ground floor boasts a modern KITCHEN/DINER, ideal for family gatherings, a comfortable living room, a useful UTILITY ROOM, and a convenient downstairs cloakroom. The first floor features three generously sized bedrooms, perfect for a growing family, and a well-appointed family bathroom. Externally, the property benefits from OFF-ROAD PARKING to the front and a private, fully enclosed REAR GARDEN, providing a safe and enjoyable outdoor space.



Total area: approx. 85.8 sq. metres (923.7 sq. feet)

£1,150 pcm

The Elms, Chatteris, Cambridgeshire PE16 6JW



Ground Floor

Living Room

4.15m (13'7") x 3.48m (11'5")

Kitchen / Dining Room

6.54m (21'5") x 2.28m (7'6")

WC

2.00m (6'7") x 1.38m (4'6")



Utility

2.00m (6'7") x 0.81m (2'8")

First Floor

Bedroom 1

3.50m (11'6") x 3.20m (10'6")

Bedroom 2

3.50m (11'6") x 3.29m (10'10")

Bedroom 3

2.99m (9'10") x 2.28m (7'6")

Bathroom

2.30m (7'7") x 2.06m (6'9")



Outside

There is off road parking at the front of the property plus a fully enclosed rear garden laid with astroturf.

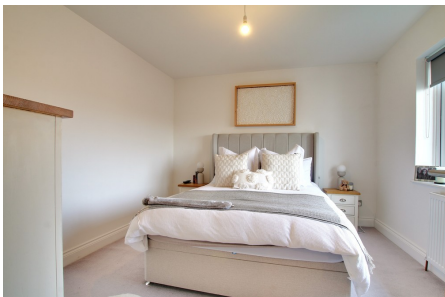


Services

Mains electricity, water and drainage. The property has oil fired central heating.

EPC to be confirmed

Council Tax Band A



Ellis Winters & Co 20 Market Hill, Chatteris, Cambridgeshire, PE16 6BA

Tel: 01354 694900 Email: info@elliswinters.co.uk www.elliswinters.co.uk