

£915 pcm

Valentine Close,
Manea, Cambridgeshire PE15 0LP

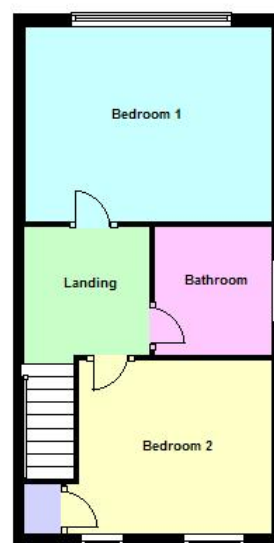
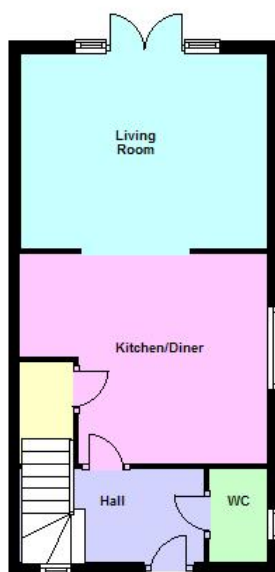


To arrange a viewing call us now on 01354 694900

Deposit £1,055

A modern semi detached house with two double bedrooms, living room and fitted kitchen/diner with built-in appliances.

This lovely property has an enclosed rear garden, parking to the side and is available end of May.



£915 pcm

Valentine Close,
Manea, Cambridgeshire PE15 0LP



GROUND FLOOR

Front entrance door to:

HALL

Double glazed window to front, radiator, coving to ceiling, stairs to first floor.

WC

Double glazed window to side, two piece suite comprising, wash hand basin and low level WC, coving to ceiling.

KITCHEN/DINER

4.14m (13'7") x 3.50m (11'6")

Fitted with a matching range of base and eye level units with worktop space over, sink unit with cupboards under, integrated fridge, dishwasher, microwave oven and automatic washing machine, double glazed window to side, radiator, coving to ceiling, ceramic tiling, under-stair cupboard, open plan to:

LIVING ROOM

4.14m (13'7") x 3.27m (10'9")

Double glazed double doors and side windows to the garden, two radiators, laminate flooring, coving to ceiling.

FIRST FLOOR LANDING

Stairs to first floor.

BEDROOM 1

4.14m (13'7") x 3.30m (10'10")

Double glazed window to rear, radiator, coving to ceiling, laminate flooring.

BEDROOM 2

3.23m (10'7") x 2.91m (9'7")

Two double glazed windows to front, radiator, coving to ceiling, storage cupboard, laminate flooring.

BATHROOM

Three piece suite comprising panel bath with shower over, wash hand basin and low level WC, ceramic tiling, heated towel rail, extractor fan, mirrored cabinet, double glazed window to side, radiator.

OUTSIDE

The front garden is laid to lawn a driveway provides parking for at least two cars, side access leads to the enclosed rear garden which is also laid to lawn with a patio area.

INITIAL LENGTH OF TENANCY

6 months

Energy rating C

Fenland District Council tax band B

Ellis Winters & Co 20 Market Hill, Chatteris, Cambridgeshire, PE16 6BA
Tel: 01354 694900 Email: info@elliswinters.co.uk www.elliswinters.co.uk