

**£850 pcm**

Fleetwood Close, March, Cambridgeshire PE15  
9NN



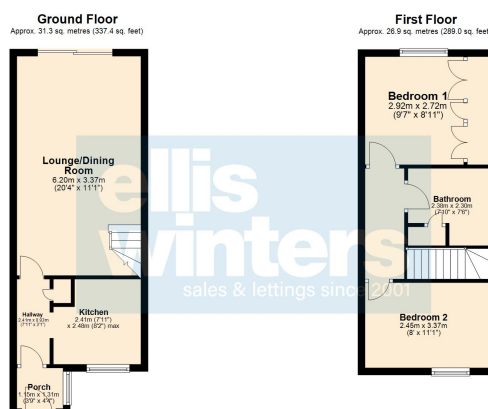
**To arrange a viewing call us now on 01354 694900**

**Deposit £980**

Nestled in a quiet cul-de-sac within the charming market town of March, this delightful two-bedroom mid-terrace home offers the perfect blend of comfort and convenience. Step inside to discover a welcoming lounge diner, ideal for relaxing and entertaining.

The well-appointed kitchen provides a functional space for culinary creations. Upstairs, you'll find two bedrooms and a family bathroom.

Outside, a small garden offers a tranquil retreat, while allocated parking provides ease and security.



Total area: approx. 58.2 sq. metres (626.4 sq. feet)

**£850 pcm**

Fleetwood Close, March, Cambridgeshire PE15 9NN



#### GROUND FLOOR

##### Kitchen

2.48m (8'2") max. x 2.41m (7'11")

##### Lounge/Dining Room

6.20m (20'4") x 3.37m (11'1")

#### FIRST FLOOR

##### Bedroom 2

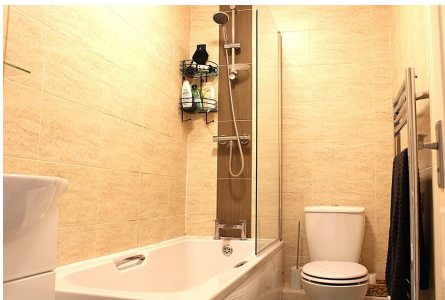
3.37m (11'1") x 2.45m (8')

##### Bathroom

2.38m (7'10") x 2.30m (7'6")

##### Bedroom 1

2.92m (9'7") x 2.72m (8'11")



#### OUTSIDE

##### GARDEN

Is laid to lawn with covered seating area and rear access.



#### INITIAL LENGTH OF TENANCY

6 months

Fenland District Council tax band A

Energy rating C



Ellis Winters & Co 20 Market Hill, Chatteris, Cambridgeshire, PE16 6BA  
Tel: 01354 694900 Email: [info@elliswinters.co.uk](mailto:info@elliswinters.co.uk) [www.elliswinters.co.uk](http://www.elliswinters.co.uk)