

£490,000

Parkview Lane, Manea, Cambridgeshire PE15 0LZ



To arrange a viewing call us now on 01354 694900

This stunning FOUR-BEDROOM DETACHED family home offers a blend of comfort and convenience plus has an additional one bedroom, SELF CONTAINED ANNEX. When entering the main property, you are welcomed by a LARGE KITCHEN/DINER that provides plenty of space for family dinners and as you wander through to the living room, the standout feature is the INGLENOOK STYLE FIREPLACE complete with WOODBURNING STOVE. There are four double bedrooms upstairs, TWO EN-SUITES and the family bathroom. The separate one bedroom annex is incredibly spacious and has its own kitchen, living room, shower room, bedroom and LARGE CONSERVATORY

Ellis Winters & Co 20 Market Hill, Chatteris, Cambridgeshire, PE16 6BA
Tel: 01354 694900 Email: info@elliswinters.co.uk www.elliswinters.co.uk

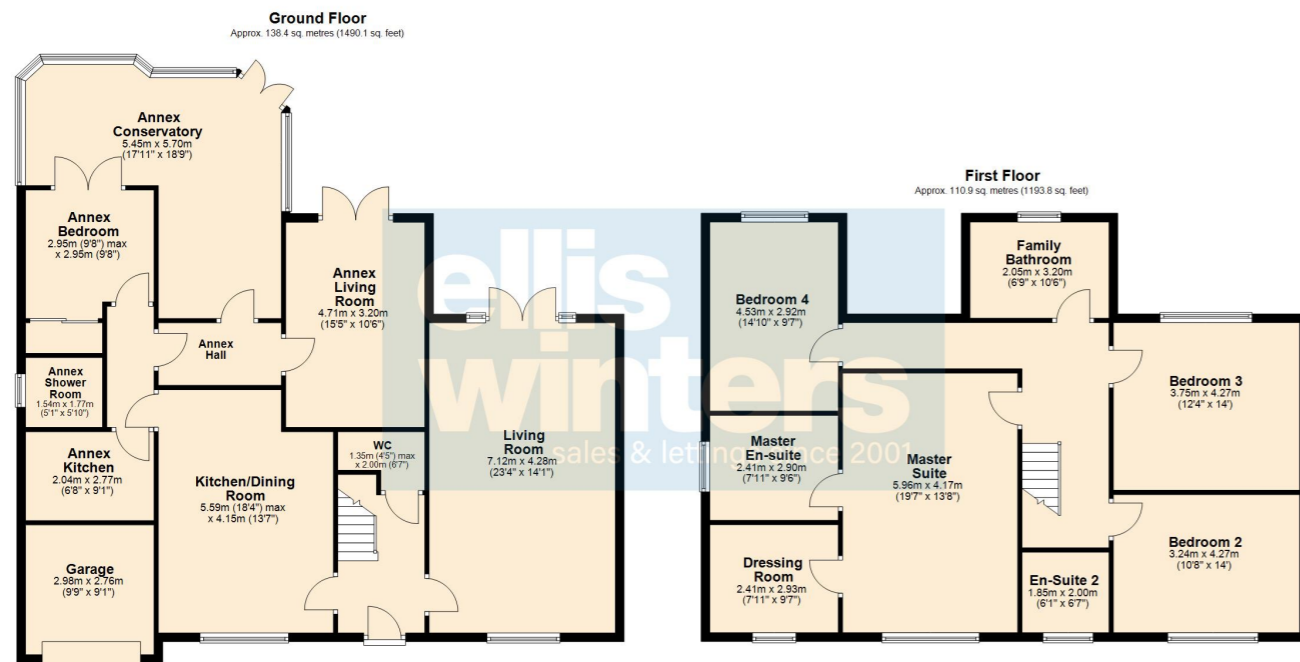
elliswinters&co



elliswinters&co

£490,000

Parkview Lane, Manea, Cambridgeshire PE15 0LZ



Total area: approx. 249.3 sq. metres (2684.0 sq. feet)

Ground Floor

WC

2.00m (6'7") x 1.35m (4'5") max
Fitted with a low level wc and hand wash basin

Living Room

7.12m (23'4") x 4.28m (14'1")
Stunning exposed brick inglenook style fireplace with modern 'designer' woodburning stove, window to front and double doors at rear leading to garden

Kitchen/Dining Room

5.59m (18'4") max x 4.15m (13'7")
Fitted with a matching range of wall and base units housing 1 1/2 sink and drainer, integrated dishwasher, rangemaster electric cooker, space for fridge/freezer, tiled floor, window to front

First Floor

Master Suite

5.96m (19'7") x 4.17m (13'8")
Window to front

Dressing Room

2.93m (9'7") x 2.41m (7'11")
Window to front, fitted with shelving and hanging rails and storage, airing cupboard

Master En-suite

2.90m (9'6") x 2.41m (7'11")
Fitted with a panelled bath which has mixer tap shower, corner shower cubicle, low level wc and hand wash basin set within vanity unit. Window to side

Bedroom 2

4.27m (14') x 3.24m (10'8")
Window to front

En-Suite 2

2.00m (6'7") x 1.85m (6'1")
Fitted with a corner shower cubicle, low level wc and hand wash basin. Window to front

Bedroom 3

4.27m (14') x 3.75m (12'4")
Window to rear

Bedroom 4

4.53m (14'10") x 2.92m (9'7")
Window to rear

Family Bathroom

3.20m (10'6") x 2.05m (6'9")
Fitted with a double shower cubicle, low level wc and hand wash basin set within vanity unit. Window to rear

Annex is located on the ground floor

Annex Kitchen

2.77m (9'1") x 2.04m (6'8")
Fitted with a matching range of wall and base units housing single electric oven and four ring ceramic hob with extractor over, plumbing for dishwasher, space for fridge, single sink and drainer.

Annex Living Room

4.71m (15'5") x 3.20m (10'6")
Double doors leading out to rear garden

Annex Conservatory

5.70m (18'9") x 5.45m (17'11")
Large well shaped conservatory with double doors leading out to the garden

Annex Bedroom

2.95m (9'8") x 2.95m (9'8") max
Fitted wardrobe, double doors into conservatory

Annex Shower Room

Fitted with a corner shower cubicle, low level wc and hand wash basin. Window to side.

Outside

The extensive front garden is block paved to provide ample off road parking. Garage 2.98m (9'9") x 2.76m (9'1") Electric roller door, plumbing for washing machine, worktop

To the rear, the garden has well established borders, allotment area, patio and an extensive workshop (6.40m x 4.50m) which has power and light.

The property is set in the tranquil locale of Manea, Cambridgeshire, offering a peaceful neighbourhood vibe. Local amenities include shop, schools, and parks, all within a convenient distance. Transportation options are readily available with nearby access to road networks and public transportation services, ensuring that commuting or travelling is straightforward.

Ellis Winters has not tested any apparatus, equipment fitting or services and so cannot verify that they are in working order. The buyer is advised to obtain verification from their solicitor or surveyor. Floor plans are for representational purposes only and are not to scale.

elliswinters&co