




alan
hawkins

Noredown Way, Royal Wootton Bassett, SN4 8BL

01793 840 222 | alanhawkins.co.uk

alan
hawkins
PROPERTY SALES & LETTINGS

A semi-detached bungalow with a dark tiled roof and a brick chimney. A large conservatory with a white frame and glass panels is attached to the rear. The garden is green with a stone path leading to the conservatory. There are various plants and a wooden fence in the background.

2 Bedroom Semi-Detached Bungalow
Beautifully Presented Throughout
Conservatory
Large Driveway + Gated Carport Parking
No Onward Chain

- Move In Ready
- Sought after residential location
- 60Ft West Facing rear Garden
- Viewings Advised

alan
hawkins

PROPERTY SALES & LETTINGS

24 Noredown Way

Royal Wootton Bassett, SN4 8BL

£335,000

Situated in one of the most desirable areas of Royal Wootton Bassett, this immaculately presented two-bedroom semi-detached bungalow offers a fantastic opportunity for those seeking a comfortable and well-maintained home. Built in the 1960s with solid internal walls, the property enjoys a generous 60ft rear garden and ample off-road parking to the front and side, complete with a carport.

For sale with no onward chain and vacant possession, the accommodation includes an entrance porch leading to a welcoming hallway, two well-proportioned bedrooms, a shower room with double width shower, a modern kitchen and a spacious 20ft lounge/diner, which flows seamlessly into a delightful conservatory overlooking the garden. Additional highlights include uPVC double glazing, low-maintenance uPVC

fascias and soffits and gas radiator central heating via a combi boiler.

There is a fully enclosed, established rear garden with a westerly-facing aspect, soaking up the afternoon and evening sun. This tranquil space is perfect for relaxation, gardening, or entertaining, and provides a peaceful retreat that beautifully complements the charm of this lovely bungalow

This charming home has been lovingly maintained and is ready to move into. Viewing is highly recommended—call today to arrange an appointment!

Viewings

By appointment through Alan Hawkins Property Sales. Tel: 01793 840 222

Council Tax: Wiltshire Council

Tax Band C For year 2024/25 = £2144.02
For information on tax banding and rates, please call Wiltshire Council

Tenure

Freehold

Gas: Mains

Electric: Mains

Water & Waste: Mains

Flood Risk: None


Internet Speeds: tbc

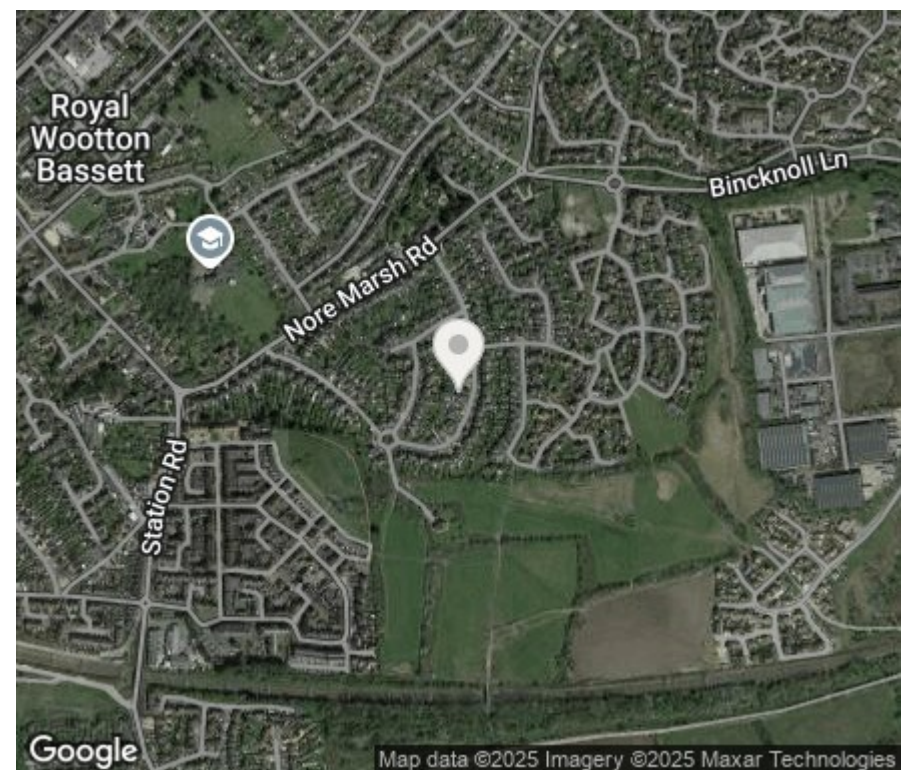




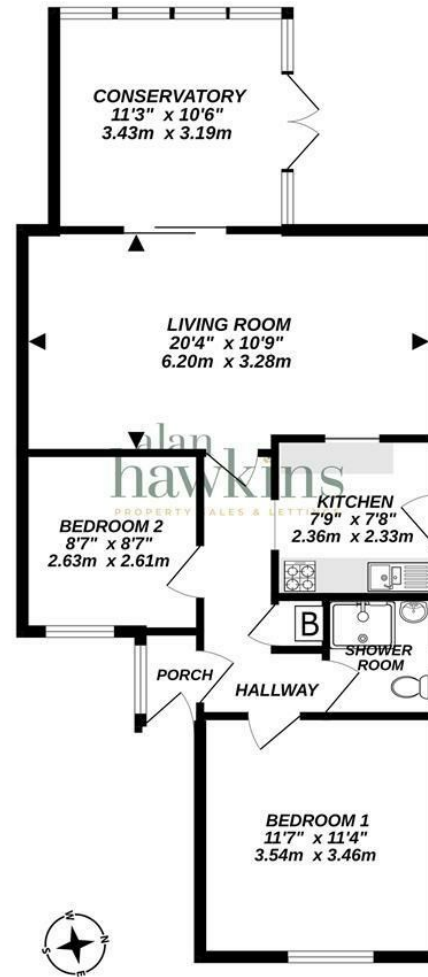


Energy Efficiency Rating (England & Wales)

Energy Efficiency Rating		
	Current	Potential
Very energy efficient - lower running costs		
(92 plus) A		86
(81-91) B		
(69-80) C	69	
(55-68) D		
(39-54) E		
(21-38) F		
(1-20) G		
Not energy efficient - higher running costs		
England & Wales		EU Directive 2002/91/EC 



GROUND FLOOR
695 sq.ft. (64.6 sq.m.) approx.



TOTAL FLOOR AREA : 695 sq.ft. (64.6 sq.m.) approx.

Whilst every attempt has been made to ensure the accuracy of the floorplan contained here, measurements of doors, windows, rooms and any other items are approximate and no responsibility is taken for any error, omission or mis-statement. This plan is for illustrative purposes only and should be used as such by any prospective purchaser. The services, systems and appliances shown have not been tested and no guarantee as to their operability or efficiency can be given.
Made with Metropix ©2025

Disclaimer: These particulars are believed to be correct but their accuracy cannot be guaranteed. They do not form part of the contract and Alan Hawkins Estate Agents are not to be held liable in any way for any mistakes or inaccuracies in these particulars. The agents have not tested any apparatus,

equipment, fixtures or services and so cannot verify they are in working order, or fit for their purposes, neither have the agents checked the legal documents to verify the freehold/leasehold status of the property. The buyer is advised to obtain verification from their solicitor/surveyor.

alan hawkins

PROPERTY SALES & LETTINGS

01793 840 222 | alanhawkins.co.uk

Alan Hawkins

26/26a High Street,
Royal Wootton Bassett
Wiltshire, SN4 7AA

