



alan
hawkins

Lillybrook Estate, Lyneham, SN15 4AS

01793 840 222 | alanhawkins.co.uk

alan
hawkins
PROPERTY SALES & LETTINGS



- Omar Tudor Executive
- No Onward Chain
- Shower Room & En-Suite Bathroom
- Separate Dining Room
- Garage & Parking

- Two Bedroom Park Home
- 45 x 20 Sited In 1997
- Utility Room
- Dual Aspect 19ft living Room
- Brand New Boiler 2025



110 Lillybrook Estate Lyneham, SN15 4AS

£169,995

For sale with NO ONWARD CHAIN is this 45 x 20 Omar 'Tudor Executive' twin park home with garage and parking situated on this popular family run residential site for the over 50s.

The internal layout of this home comprises an entrance hallway, dining room, 19ft dual aspect living room, kitchen with separate utility room, shower room and two double bedrooms with bedroom one having an en-suite bathroom.

Externally, the property enjoys surrounding low maintenance gardens, a garage to the rear (rented) with up and over door, personal

door to the side, power & lighting with parking to the front.

This home is heated via an oil fired central heating system and further benefits uPVC double glazing and superfast broadband speeds available from Sky with an average speed of 61Mb/s.

This home also benefits from the rarity of a 5% commission rate instead of the usual 10% when you sell the home.

For more information or to simply arrange a viewing contact Alan Hawkins Property Sales today on 01793 840222



Viewings

By appointment through Alan Hawkins
Property Sales. Tel: 01793 840 222

Council Tax: Wiltshire Council

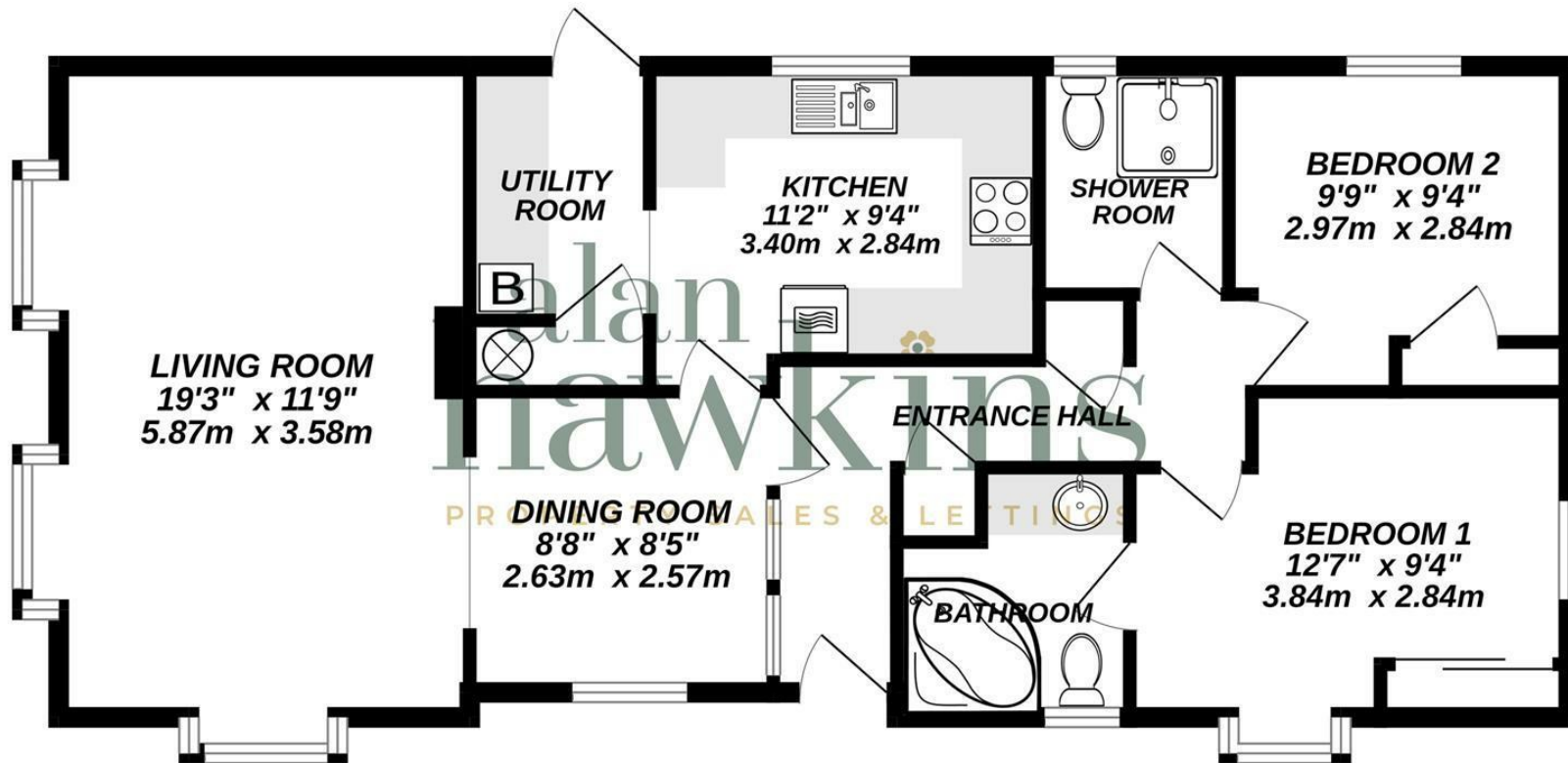
Tax Band A For year 2024/25 = £1647.57
For information on tax banding and rates,
please call Wiltshire Council

Pitch Fee

£202.28 per month.



GROUND FLOOR
813 sq.ft. (75.6 sq.m.) approx.



TOTAL FLOOR AREA : 813 sq.ft. (75.6 sq.m.) approx.

Whilst every attempt has been made to ensure the accuracy of the floorplan contained here, measurements of doors, windows, rooms and any other items are approximate and no responsibility is taken for any error, omission or mis-statement. This plan is for illustrative purposes only and should be used as such by any prospective purchaser. The services, systems and appliances shown have not been tested and no guarantee as to their operability or efficiency can be given.

Made with Metropix ©2024