



Andrews Court, Lyneham, SN15 4SN

01793 840 222 | alanhawkins.co.uk

alan
hawkins
PROPERTY SALES & LETTINGS



- Apartment 13 - The Bibury
- Spacious One bedroom Apartment
- Fully Tiled Wetroom
- Communal Lounge, Sun Lounge and Kitchen
- Over 55's

- Second Floor
- Open Plan Living/Kitchen/Dining Room with 'Hacker' Kitchen
- Under Floor Heating
- Communal South Facing Gardens
- Viewings Available Now.

Apartment 13, Cotswold House Andrews Court

Lyneham, SN15 4SN

£237,000

Apartment 13 an impressively spacious 1 bedroom apartment situated on the 2nd (top) floor enjoying lovely elevated views being the largest one bedroom apartment in the complex. This penthouse apartment is designed to the 'The Bibury' style and offers 687 sq ft of accommodation. Internally the lay out comprises a generous 24ft x 17ft open plan living/kitchen and dining room featuring an attractive 'Hacker' kitchen with high end appliances. The large bedroom which can easily accommodate a King sized bed and the optional wardrobe upgrade and enjoys a fully tiled shower/wet room ensuite with a 'Jack & Jill' style access form the main hall. As with all the apartments benefits from zonal controlled under floor heating, video entrance system and accessed via the communal lift.

COTSWOLD HOUSE:

Cotswold house is a newly constructed and exclusive development of 18 semi/retirement 1 bedroom and 2 bedroom apartments specifically designed for the over 55's who are looking for quality yet contemporary living in a state of the art complex which features a delightful communal lounge with a stunning sun lounge and kitchenette for socialising and entertaining as well as wonderfully decorated hallways with lift access to all floors. To the outside are maintained gardens to the rear and two sides, the rear enjoying a perfect south aspect. All flats are heated by way of ground source heat pump technology, supported solar panels to the roof, feeding the underfloor heating to each

apartment with individual zonal controls to each room, controlling the temperature to each room to just how you like it, a proven and cost effective way of heating your home! There are ample parking provisions with electric car charging points, as well as electric scooter garage parking and charging facilities.

Andrews Court:

Cotswold House is situated in Andrews Court, an exciting Centre for new and existing businesses in Lyneham and the surrounding area. Once fully occupied will provide the residents and local people with a plethora of Medical, Beauty, Retail and Service options. Currently there is an excellent Pharmacy and Inoculation Centre, Post Office, Esso Petrol Station, Costcutter Supermarket, Costa Coffee Shop, Off Licence, Ladies Beauty and Hairdresser, Gentlemen's Barber Shop, top quality Cafe for fresh Cake, Coffee and Snacks, Veterinary Practice and even a Tattoo Artist for the more adventurous. Future plans include a Gourmet Fish and Chip Shop and an excellent Italian Style Family Restaurant with a Wine Bar all on the doorstep of Cotswold House.



Viewings

By appointment through Alan Hawkins Property Sales. Tel: 01793 840 222

Council Tax: Wiltshire Council

Tax Band New Build For information on tax banding and rates, please call Wiltshire Council

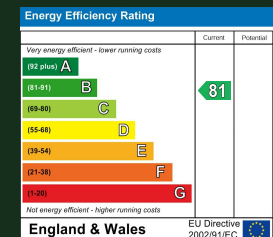
Tenure

Leasehold 125 Yr Lease
Ground Rent: £156 p/a

Management Fee

Service Charge
£57 per week to include Communal Heating, Lighting and Cleaning and running costs of the complex.

Energy Efficiency Rating (England & Wales)





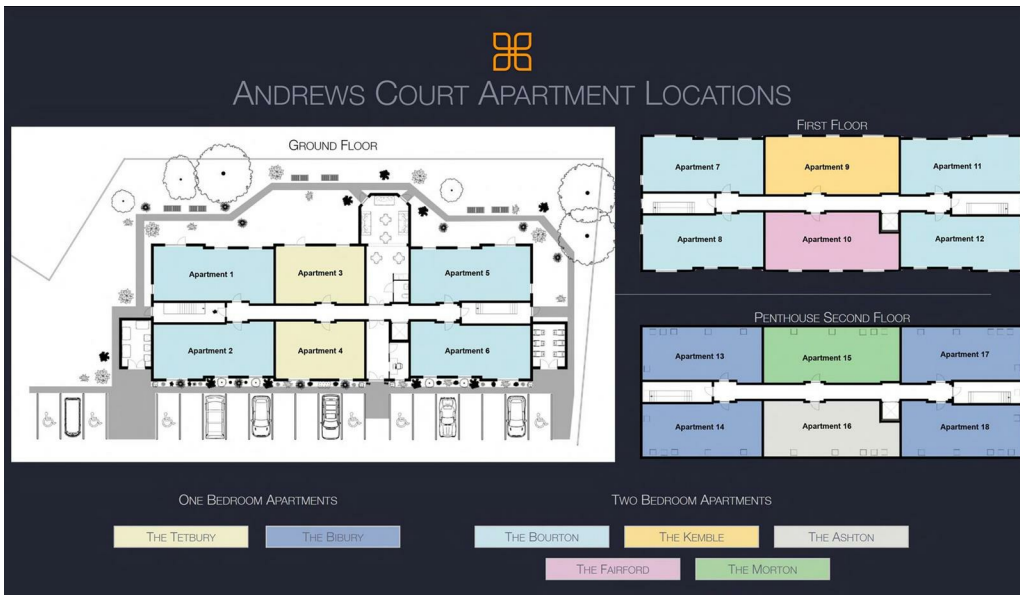


Show Home image



Show Home image

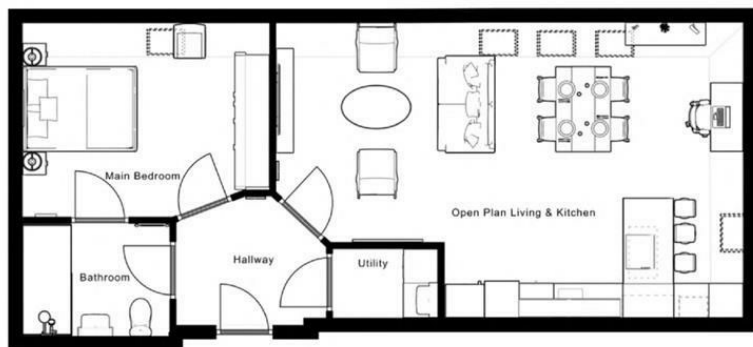






Dimensions

| | |
|----------------------------|----------------------------------|
| Open Plan Living & Kitchen | 7.59m x 5.22m - (24'10" x 17'1") |
| Master Bedroom | 4.33m x 3.39m - (14'3" x 11'1") |
| Bathroom | 2.55m x 1.98m - (8'4" x 6'6") |
| Utility Room | 1.83 x 1.36m - (6'0" x 4'6") |



Disclaimer: These particulars are believed to be correct but their accuracy cannot be guaranteed. They do not form part of the contract and Alan Hawkins Estate Agents are not to be held liable in any way for any mistakes or inaccuracies in these particulars. The agents have not tested any apparatus,

equipment, fixtures or services and so cannot verify they are in working order, or fit for their purposes, neither have the agents checked the legal documents to verify the freehold/leasehold status of the property. The buyer is advised to obtain verification from their solicitor/surveyor.

alan hawkins

PROPERTY SALES & LETTINGS

01793 840 222 | alanhawkins.co.uk

Alan Hawkins

26/26a High Street,
Royal Wootton Bassett
Wiltshire, SN4 7AA

