



Andrews Court, Lyneham, SN15 4SN

01793 840 222 | alanhawkins.co.uk

alan
hawkins
PROPERTY SALES & LETTINGS



- Apartment 7 'The Bourton'
- 'Hacker' Kitchen with Appliances
- Two Generous Bedrooms (*Wardrobe Upgrade available)
- Communal Lounge/Sun Lounge and Kitchen area
- Mobility Scooter Storage and Charging facility
- First Floor - Two Bedrooms
- Spacious Open Plan Living Accommodation
- Zonal Underfloor Heating (GSHP)
- Over 55's
- South Facing Communal Gardens

Apartment 7, Cotswold House Andrews Court Lyneham, SN15 4SN

£267,000

Apartment 7 is a lovely two bedroom apartment located on the 1st floor designed to the popular 'The Bourton' design, matching that of the show home. The generous open plan living kitchen and dining area is the perfect place to relax and entertain and features a beautiful 'Hacker' kitchen with high end integrated appliances. The further layout comprises a spacious entrance hallway, utility room (with optional 2nd toilet upgrade). There are two generous bedrooms (optional upgrade for wardrobe installation to bed 1) and a stunning fully tiled shower/wet room with high end sanitary ware and ambient motion censored lighting. As with all the apartments benefits from zonal controlled under floor heating, video entrance system and accessed via the communal lift.

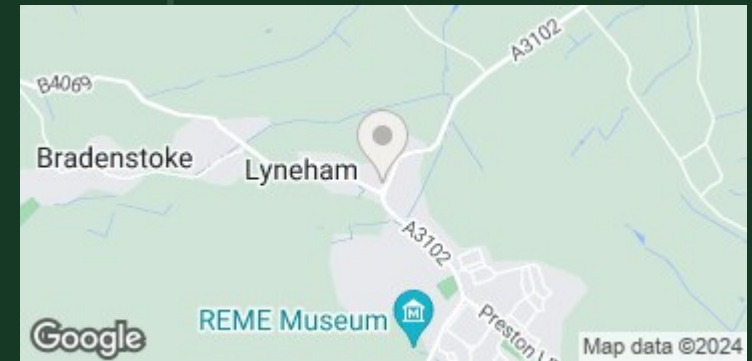
COTSWOLD HOUSE:

Cotswold house is a newly constructed and exclusive development of 18 semi/retirement 1 bedroom and 2 bedroom apartments specifically designed for the over 55's who are looking for quality yet contemporary living in a state of the art complex which features a delightful communal lounge with a stunning sun lounge and kitchenette for socialising and entertaining as well as wonderfully decorated hallways with lift access to all floors. To the outside are maintained gardens to the rear and two sides, the rear enjoying a perfect south aspect. All flats are heated by way of ground source heat pump technology, supported solar panels to the roof, feeding the underfloor heating to each apartment with individual zonal controls to each room, controlling the temperature to each room

to just how you like it, a proven and cost effective way of heating your home! There are ample parking provisions with electric car charging points, as well as electric scooter garage parking and charging facilities.

Andrews Court:

Cotswold House is situated in Andrews Court, an exciting Centre for new and existing businesses in Lyneham and the surrounding area. Once fully occupied will provide the residents and local people with a plethora of Medical, Beauty, Retail and Service options. Currently there is an excellent Pharmacy and Inoculation Centre, Post Office, Esso Petrol Station, Costcutter Supermarket, Costa Coffee Shop, Off Licence, Ladies Beauty and Hairdresser, Gentlemen's Barber Shop, top quality Cafe for fresh Cake, Coffee and Snacks, Veterinary Practice and even a Tattoo Artist for the more adventurous. Future plans include a Gourmet Fish and Chip Shop and an excellent Italian Style Family Restaurant with a Wine Bar all on the doorstep of Cotswold House.



Viewings

By appointment through Alan Hawkins Property Sales. Tel: 01793 840 222

Council Tax: Wiltshire Council

Tax Band New Build For information on tax banding and rates, please call Wiltshire Council

Tenure

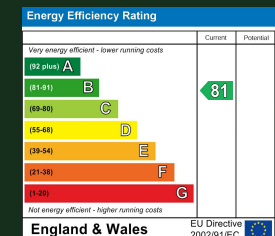
Leasehold 125 Yr Lease
Ground Rent: £156 p/a

Management Fee

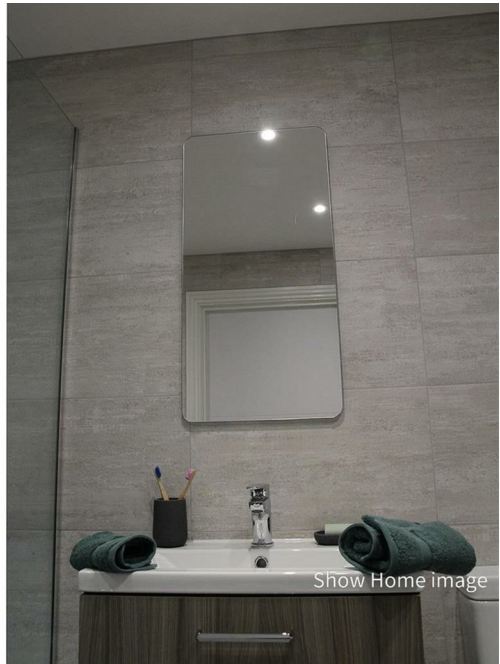
Service Charge

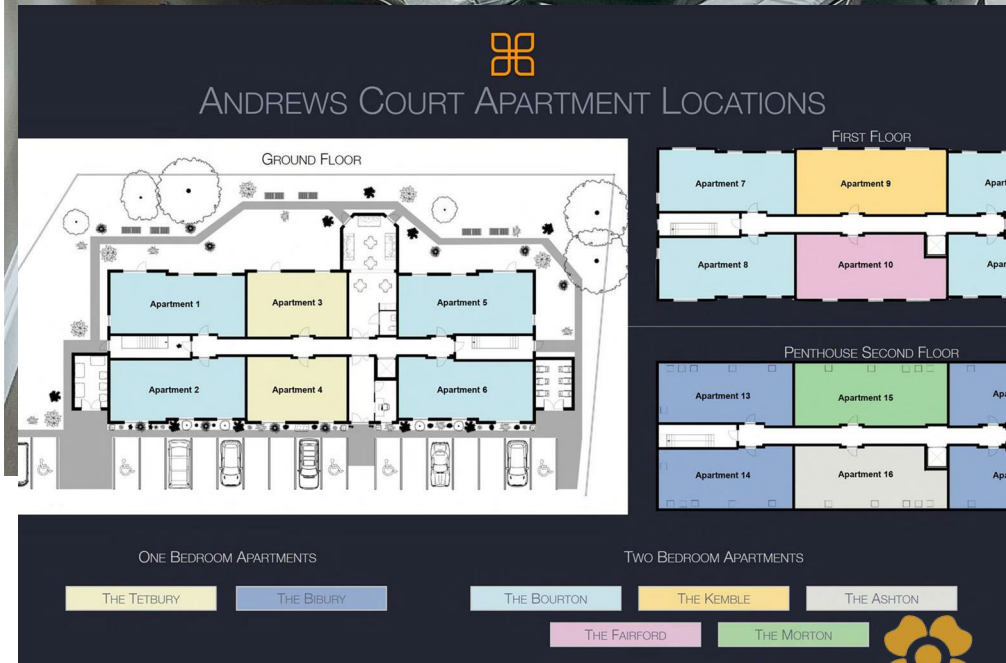
£57 per week to include Communal Heating, Lighting and Cleaning and running costs of the complex.

Energy Efficiency Rating (England & Wales)











Dimensions:

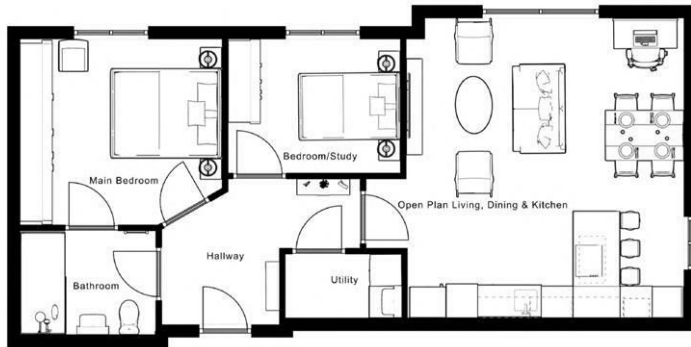
Open Plan Living Accommodation:
5.65m x 5.12m - 16'10" x 18'7"

Master Bedroom:
3.81m x 3.50m - 12'6" x 11'6"

Guest Bedroom:
3.23m x 2.53m - 10'7" x 8'4"

Bathroom:
2.55m x 1.98m - 8'4" x 6'6"

Utility:
2.11m x 1.31m - 6'11" x 4'4"



Disclaimer: These particulars are believed to be correct but their accuracy cannot be guaranteed. They do not form part of the contract and Alan Hawkins Estate Agents are not to be held liable in any way for any mistakes or inaccuracies in these particulars. The agents have not tested any apparatus,

equipment, fixtures or services and so cannot verify they are in working order, or fit for their purposes, neither have the agents checked the legal documents to verify the freehold/leasehold status of the property. The buyer is advised to obtain verification from their solicitor/surveyor.

alan hawkins

PROPERTY SALES & LETTINGS

01793 840 222 | alanhawkins.co.uk

Alan Hawkins

26/26a High Street,
Royal Wootton Bassett
Wiltshire, SN4 7AA

