



6 St. Georges Close, Selsey

Guide Price £240,000 Freehold

# 6 St. Georges Close

Selsey, Chichester

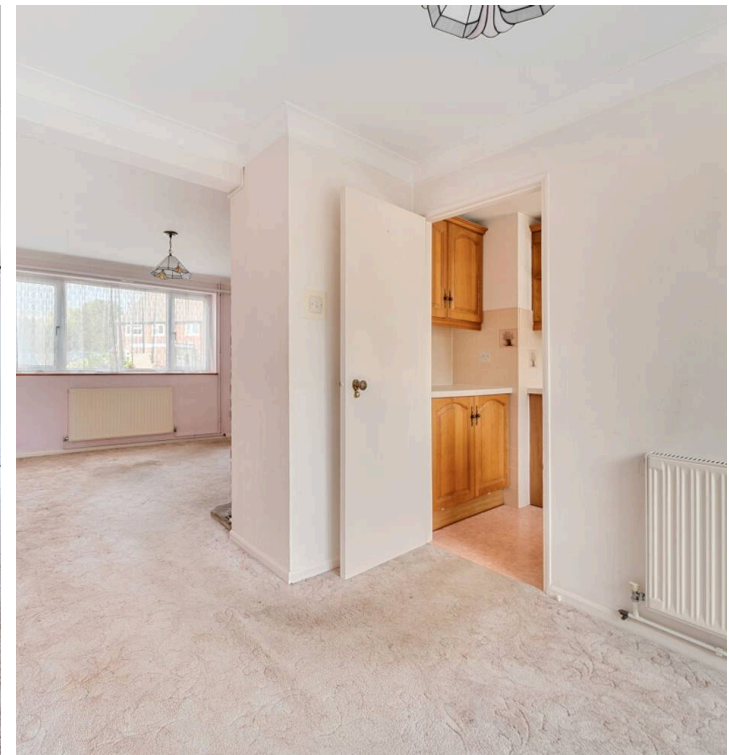
Located in a cul-de-sac, this end-terraced house offers a great opportunity for those seeking a property to put their own stamp on. Spread across two floors, this property boasts two generously sized double bedrooms, providing ample space for comfortable living. The ground floor features a living area that seamlessly flows into the dining area, itself with direct access to the rear garden. Additionally, the property includes a convenient cloakroom on the ground floor and a bathroom on the first floor.

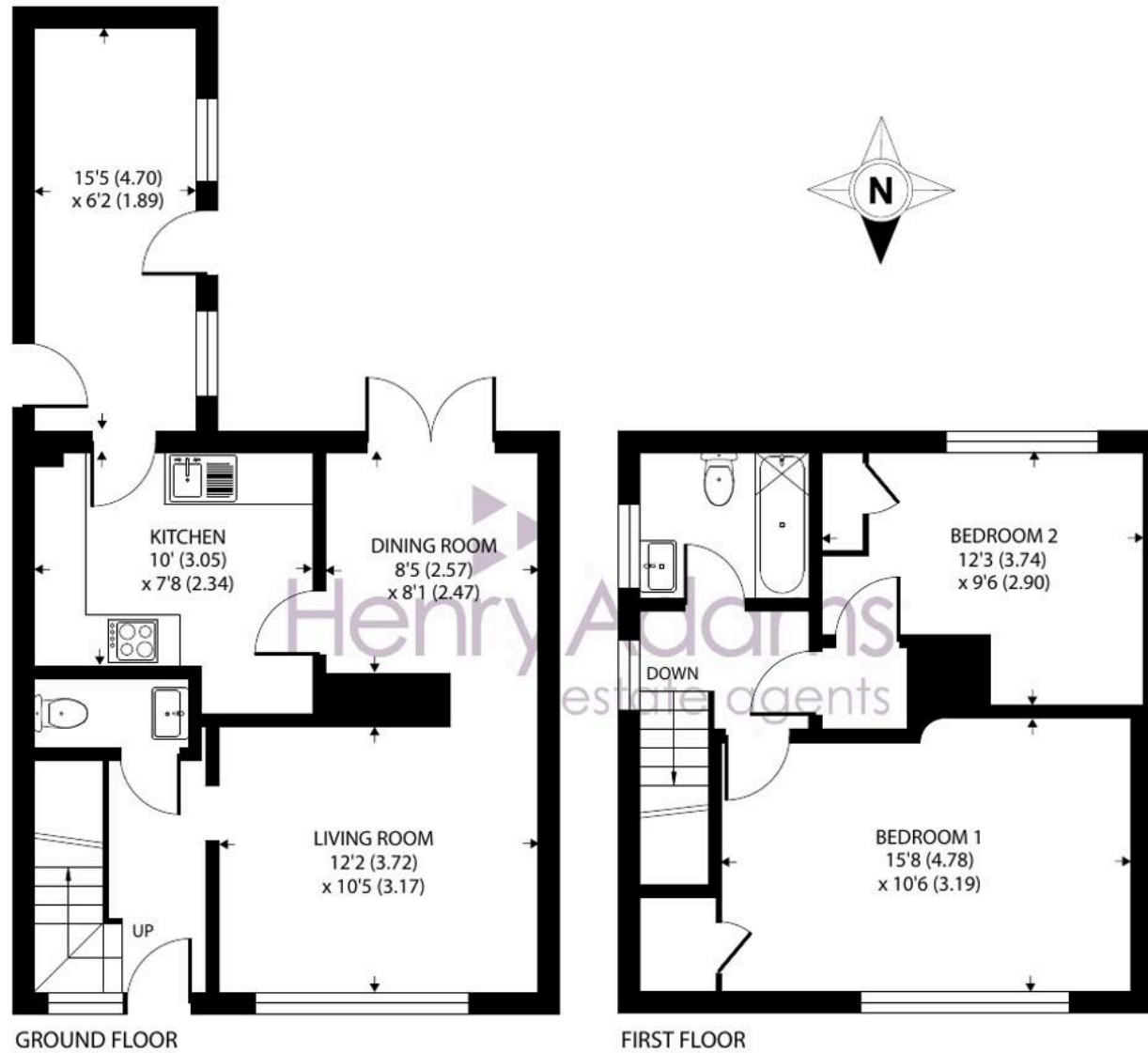
One of the highlights of this property is the southerly facing rear garden, offering a sunny aspect that will surely be enjoyed all year round.

Presented with no onward chain, this property offers a straightforward purchasing process without the complications of waiting for a chain to complete. It's important to note that this property is in need of some updating and modernisation, providing the perfect opportunity for new owners to tailor the space to their exact tastes and requirements.

Council Tax band: C, EPC Rating: D

- End terraced house
- Two double bedrooms
- Living & dining areas
- Cloakroom and 1st floor bathroom
- Cul-de-sac location
- No onward chain
- Updating and modernisation required
- Southerly facing rear garden

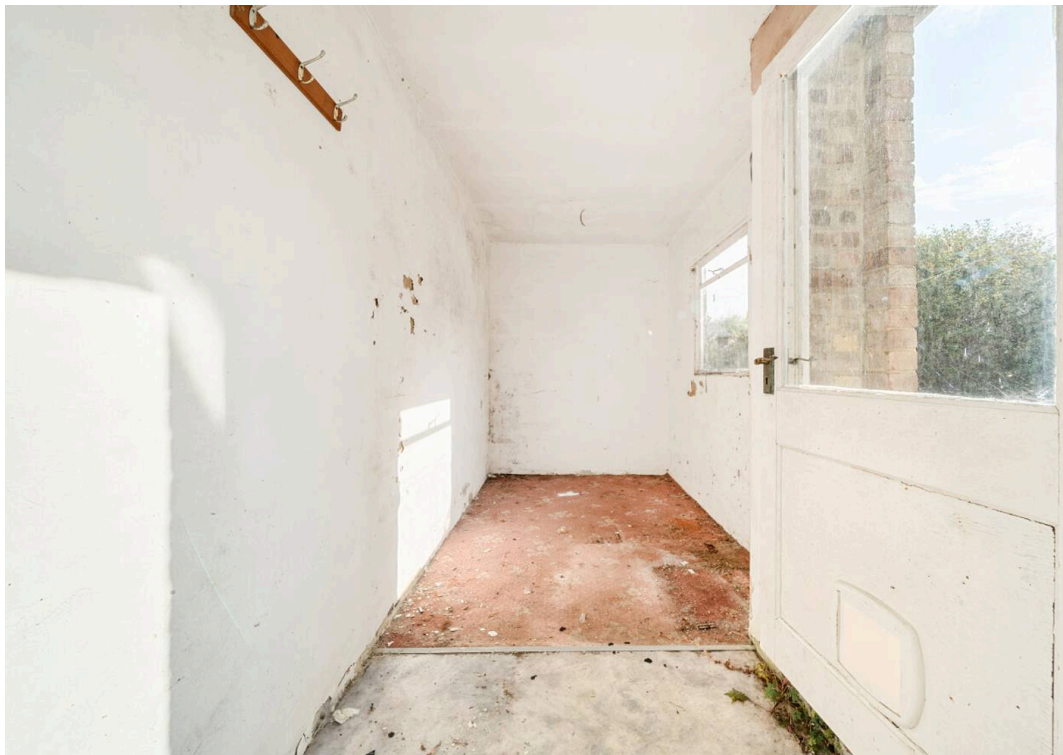




Approximate Area = 890 sq ft / 82.6 sq m

For identification only - Not to scale







## Henry Adams - Selsey

Henry Adams LLP, 122 High Street, Selsey - PO20 0QE

01243 606789 • [selsey@henryadams.co.uk](mailto:selsey@henryadams.co.uk) • [www.henryadams.co.uk/](http://www.henryadams.co.uk/)

Agents Note - Our particulars are for guidance only and are intended to give a fair overall summary of the property. They do not form part of any contract or offer, and should not be relied upon as a statement or representation of fact. Measurements, areas and distances are approximate only. Photographs may include lifestyle shots and pictures of local views. No undertaking is given as to the structural condition of the property, or any necessary consents or the operating ability or efficiency of any