



## Flat 15, Eastpoint Manor Road, Selsey

Guide Price £185,000 Leasehold



# Flat 15

Eastpoint Manor Road, Chichester

We are pleased to present this modern two-bedroom first-floor flat, situated in a purpose-built block dating back to circa 2006. Boasting a contemporary design, this property features an open plan living room and kitchen area, creating a spacious and inviting atmosphere ideal for both relaxing and entertaining. In addition, residents can enjoy the convenience of communal gardens, offering outdoor space to unwind.

The flat comprises a family bathroom and an en-suite shower room, providing practical and private facilities for every-day living. Benefiting from gas central heating and double glazing throughout, this home ensures comfort and energy efficiency year-round. Furthermore, the property includes an allocated parking space, offering convenient off-street parking for residents and visitors alike.

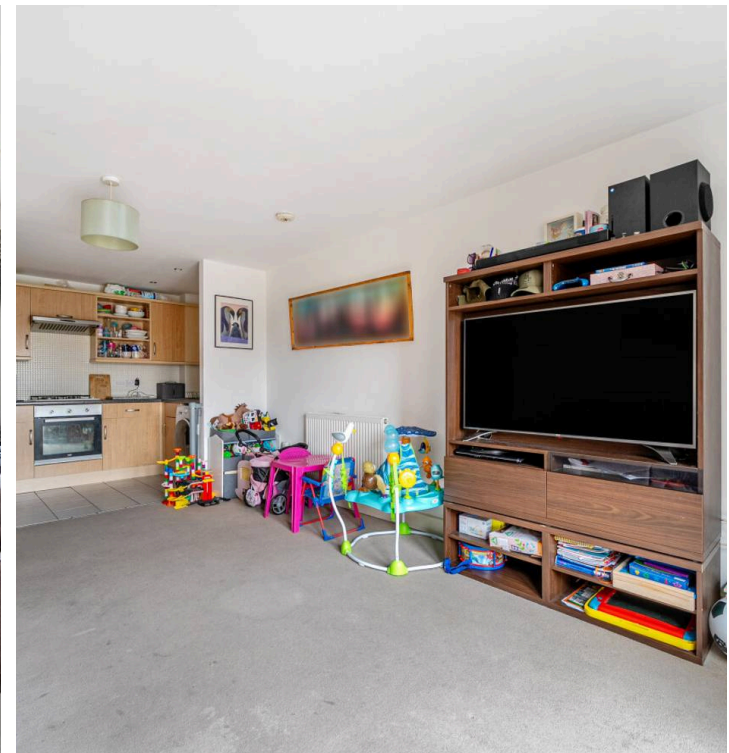
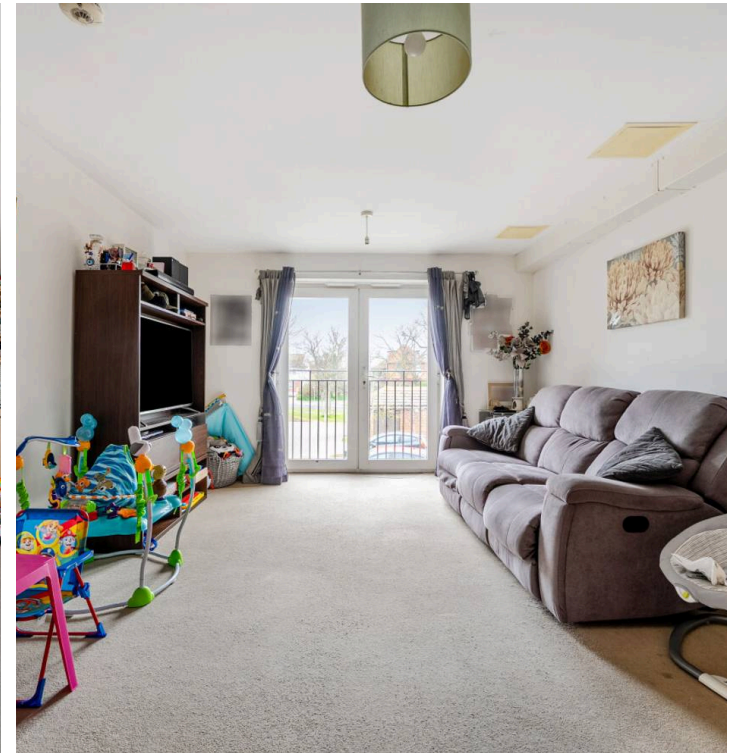
This property presents a fantastic opportunity for individuals or families looking for a contemporary living space with modern amenities and easy access to local amenities.

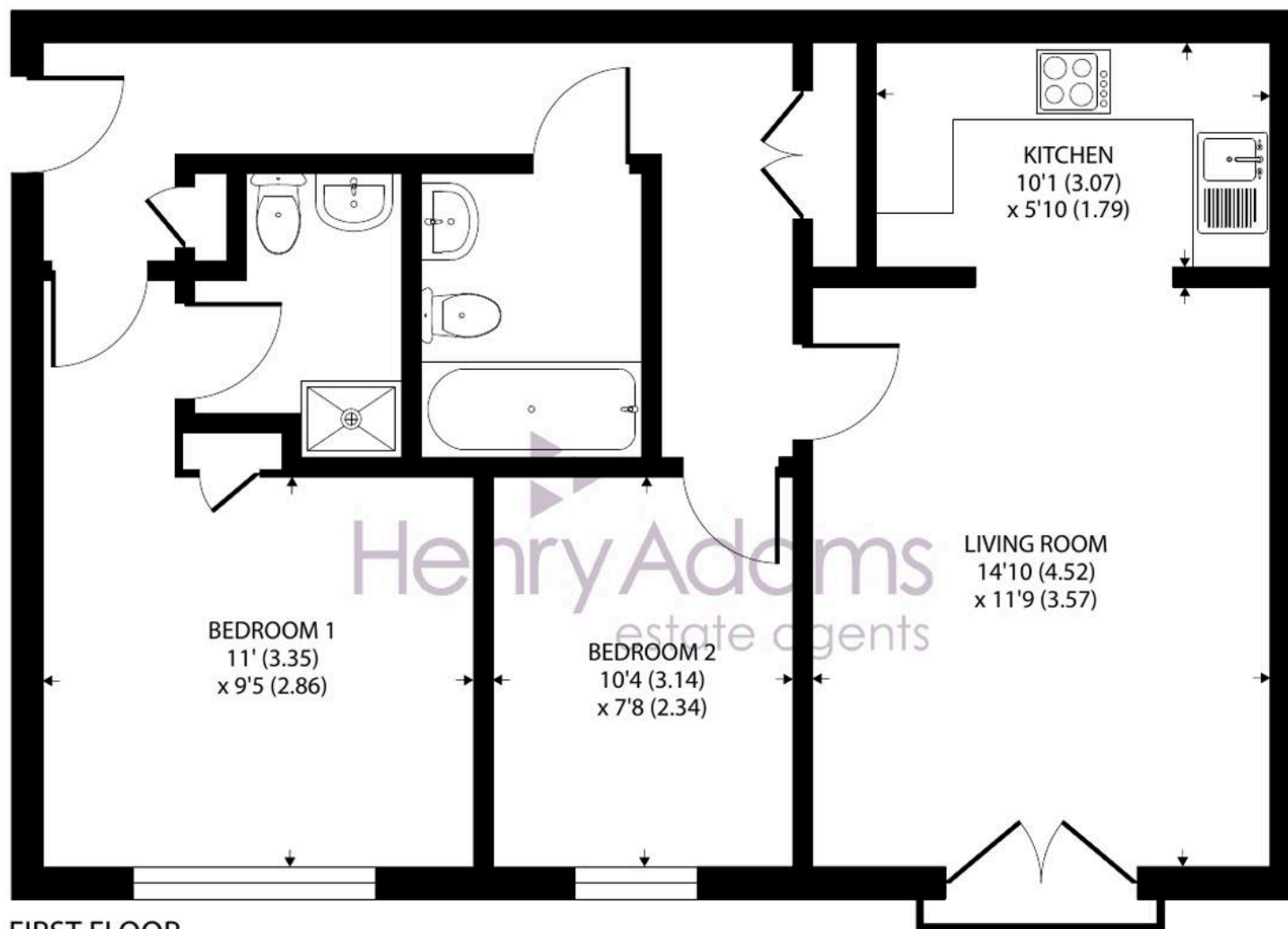
Council Tax band: B

Tenure: Leasehold

EPC Energy Efficiency Rating: B

EPC Environmental Impact Rating: B





Approximate Area = 661 sq ft / 61.4 sq m

For identification only - Not to scale









# Flat 15

Eastpoint Manor Road, Chichester

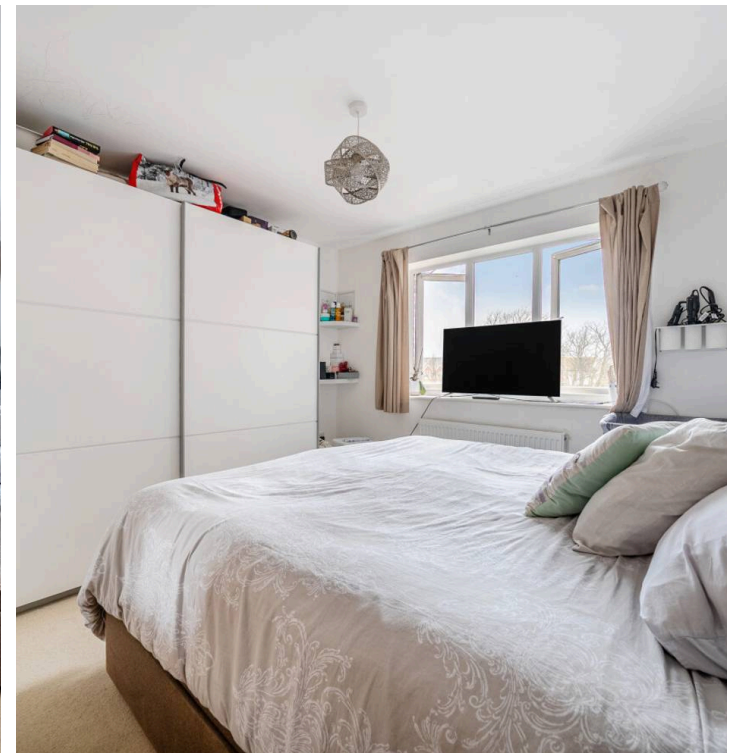
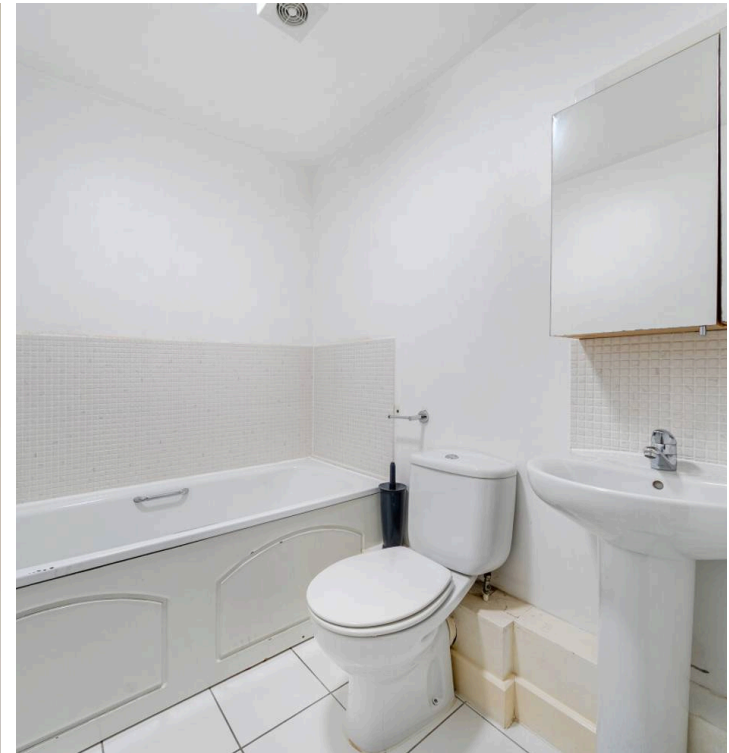
Modern 2-bed flat in purpose-built block from 2006.  
Features open plan living, communal gardens, en-suite  
& parking. Ideal for contemporary living with easy access  
to amenities. EPC-B, Council Tax-B  
Council Tax band: B

Tenure: Leasehold

EPC Energy Efficiency Rating: B

EPC Environmental Impact Rating: B

- Two bedroom first floor flat
- Purpose built circa 2006
- Open plan living room & kitchen
- Communal gardens
- Family bathroom & en-suite shower room
- Gas central heating & double glazing
- Allocated parking space







## Henry Adams - Selsey

Henry Adams LLP, 122 High Street, Selsey - PO20 0QE

01243 606789

[selsey@henryadams.co.uk](mailto:selsey@henryadams.co.uk)

[www.henryadams.co.uk/](http://www.henryadams.co.uk/)

Agents Note - Our particulars are for guidance only and are intended to give a fair overall summary of the property. They do not form part of any contract or offer, and should not be relied upon as a statement or representation of fact. Measurements, areas and distances are approximate only. Photographs may include lifestyle shots and pictures of local views. No undertaking is given as to the structural condition of the property, or any necessary consents or the operating ability or efficiency of any service, system or appliance. Please ask if you would like further information, especially before you travel to the property.