



28 Harcourt Way, Selsey

Guide Price £335,000 Freehold

 **Henry Adams**  
estate agents



# 28 Harcourt Way

Selsey, Chichester

Nestled in a quiet neighbourhood, this charming three bedroom detached bungalow offers an enticing opportunity for those looking for a blank canvas of a property to put their own style on. Boasting a favourable location and presenting itself with no forward chain, this property is a rare find in the current market.

Enter into the spacious living room illuminated by a beautiful bay window, providing a welcoming ambience for relaxation and entertainment. The bedrooms consist of two doubles and a single and the conservatory offers a seamless transition to the outdoor space while flooding the interiors with natural light. The bathroom, separate toilet and kitchen complete the property's internal accommodation. With off-road parking and a garage externally, convenience is at the forefront ensuring daily living is as effortless as possible.

Council Tax band: D

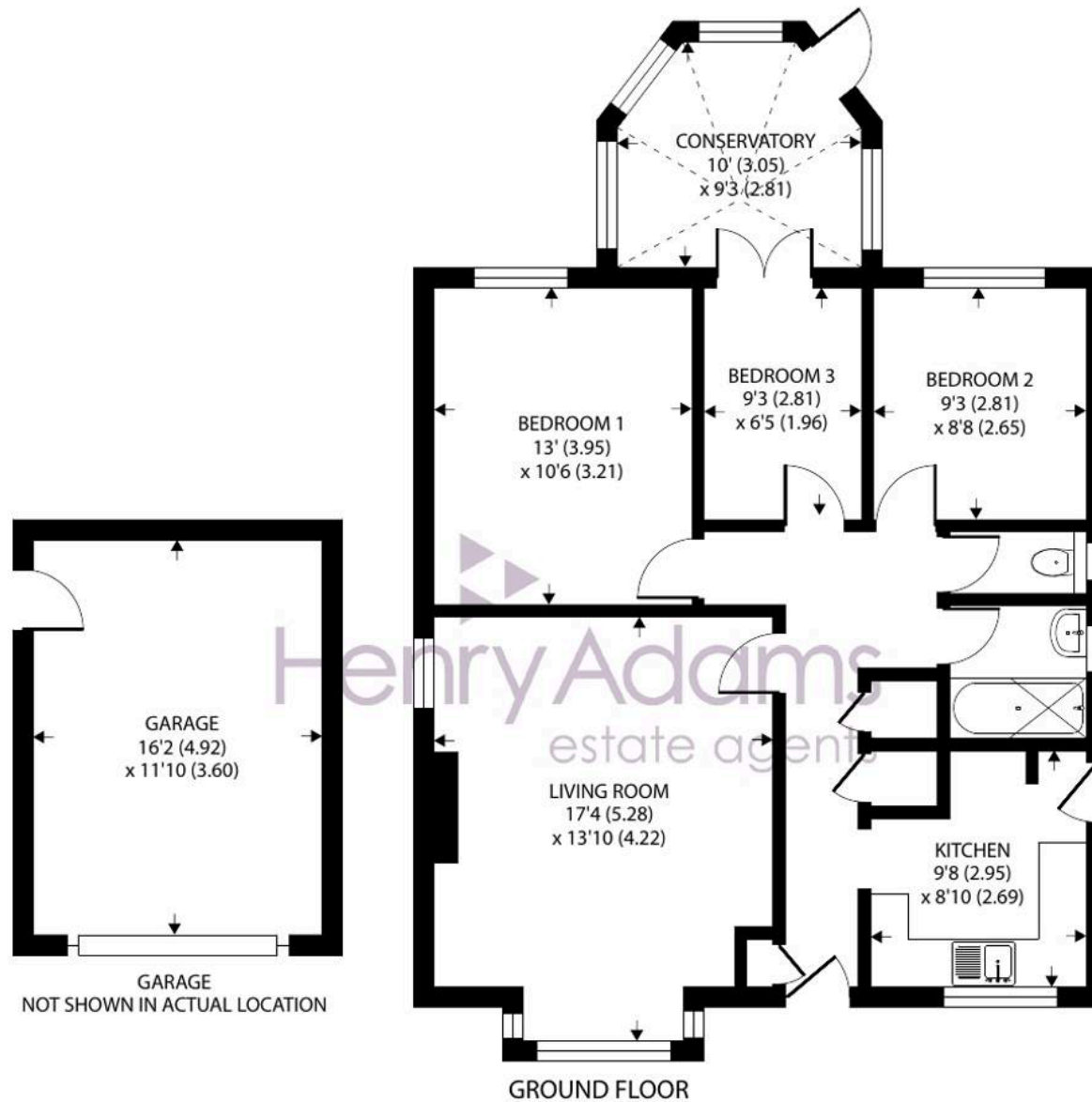
Tenure: Freehold

EPC Energy Efficiency Rating: E

EPC Environmental Impact Rating: G

- Three Bedroom Detached Bungalow
- No Forward Chain
- Large Living Room with Bay Window
- Conservatory
- Off Road Parking
- Garage





Approximate Area = 866 sq ft / 80.4 sq m

Garage = 191 sq ft / 17.7 sq m

Total = 1057 sq ft / 98.1 sq m

For identification only - Not to scale









# 28 Harcourt Way

Selsey, Chichester

Charming 3-bed bungalow in quiet neighbourhood, no forward chain. Spacious living room, conservatory, off-road parking, garage. Ideal blank canvas to make your own.

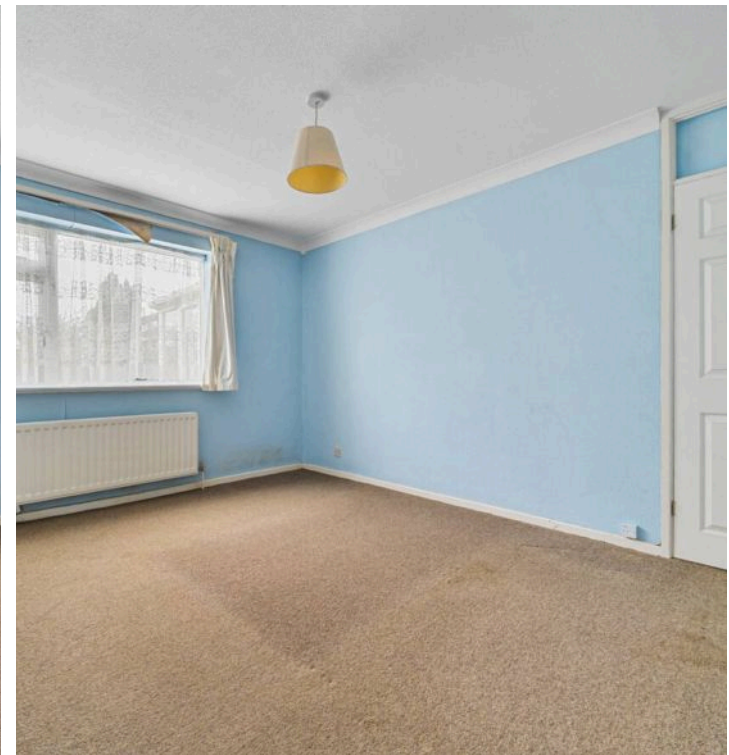
Council Tax band: D

Tenure: Freehold

EPC Energy Efficiency Rating: E

EPC Environmental Impact Rating: G

- Three Bedroom Detached Bungalow
- No Forward Chain
- Large Living Room with Bay Window
- Conservatory
- Off Road Parking
- Garage







## Henry Adams - Selsey

Henry Adams LLP, 122 High Street, Selsey - PO20 0QE

01243 606789

[selsey@henryadams.co.uk](mailto:selsey@henryadams.co.uk)

[www.henryadams.co.uk/](http://www.henryadams.co.uk/)

Agents Note - Our particulars are for guidance only and are intended to give a fair overall summary of the property. They do not form part of any contract or offer, and should not be relied upon as a statement or representation of fact. Measurements, areas and distances are approximate only. Photographs may include lifestyle shots and pictures of local views. No undertaking is given as to the structural condition of the property, or any necessary consents or the operating ability or efficiency of any service, system or appliance. Please ask if you would like further information, especially before you travel to the property.