



Bromley Lewis Road, Selsey

Guide Price £295,000 Freehold

Bromley Lewis Road

Selsey, Chichester

Situated in a location close to all the amenities on the High Street, this three-bedroom semi-detached townhouse offers a comfortable and contemporary living space. Boasting convenience with no forward chain, the property features an integral garage for secure parking. The open plan kitchen/living room with Juliette Balcony, creates a welcoming atmosphere for entertaining guests or relaxing with family. Two modern bathrooms and a separate W/C provide convenience for busy mornings. Additionally, a utility room offers practicality for household chores and storage solutions.

The property benefits from a well-established rear garden, ideal for hosting outdoor gatherings or enjoying moments of tranquility. A patio area offers a space for al fresco dining or lounging in the fresh air. This inviting property presents a desirable opportunity for those seeking a modern home in a sought-after location. Council Tax band: D

Tenure: Freehold

EPC Energy Efficiency Rating: C

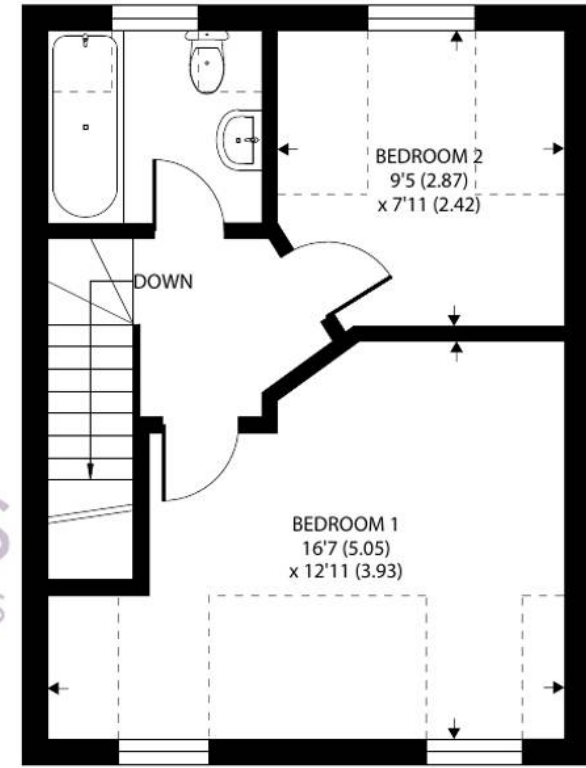
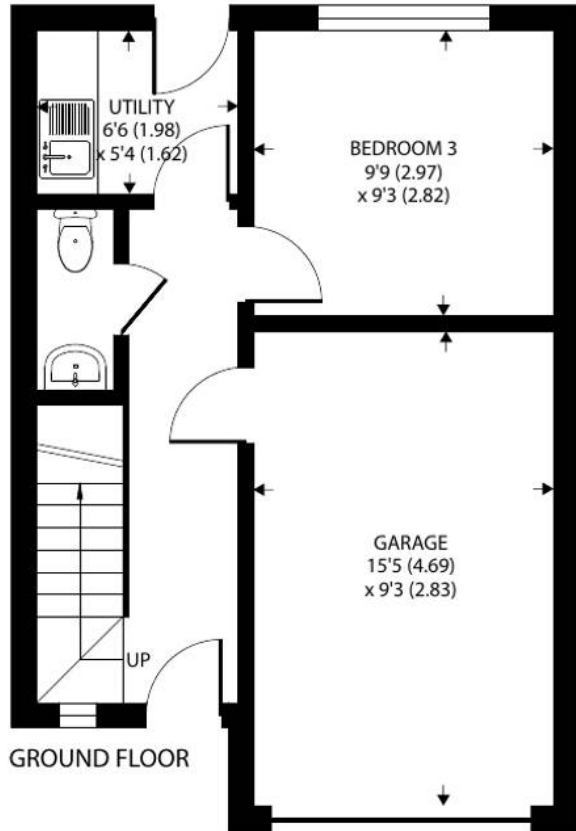
EPC Environmental Impact Rating: G

- Three Bedroom Semi-Detached Townhouse
- No Forward Chain
- Integral Garage
- Open Plan Kitchen/Living Room
- Two Bathrooms and Separate W/C
- Utility Room





Denotes restricted head height



Approximate Area = 953 sq ft / 88.5 sq m
Limited Use Area(s) = 90 sq ft / 8.3 sq m
Garage = 150 sq ft / 13.9 sq m
Total = 1193 sq ft / 110.7 sq m

For identification only - Not to scale





Henry Adams - Selsey

Henry Adams LLP, 122 High Street, Selsey - PO20 0QE

01243 606789

selsey@henryadams.co.uk

www.henryadams.co.uk/

Agents Note - Our particulars are for guidance only and are intended to give a fair overall summary of the property. They do not form part of any contract or offer, and should not be relied upon as a statement or representation of fact. Measurements, areas and distances are approximate only. Photographs may include lifestyle shots and pictures of local views. No undertaking is given as to the structural condition of the property, or any necessary consents or the operating ability or efficiency of any service, system or appliance. Please ask if you would like further information, especially before you travel to the property.