



7 Sunnymead Close, Selsey

Guide Price £399,000 Freehold

7 Sunnymead Close

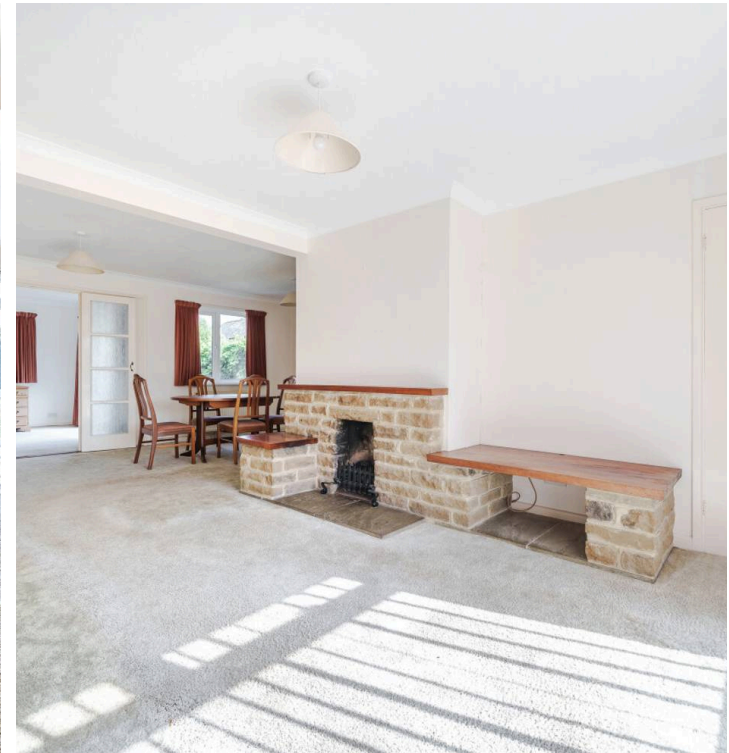
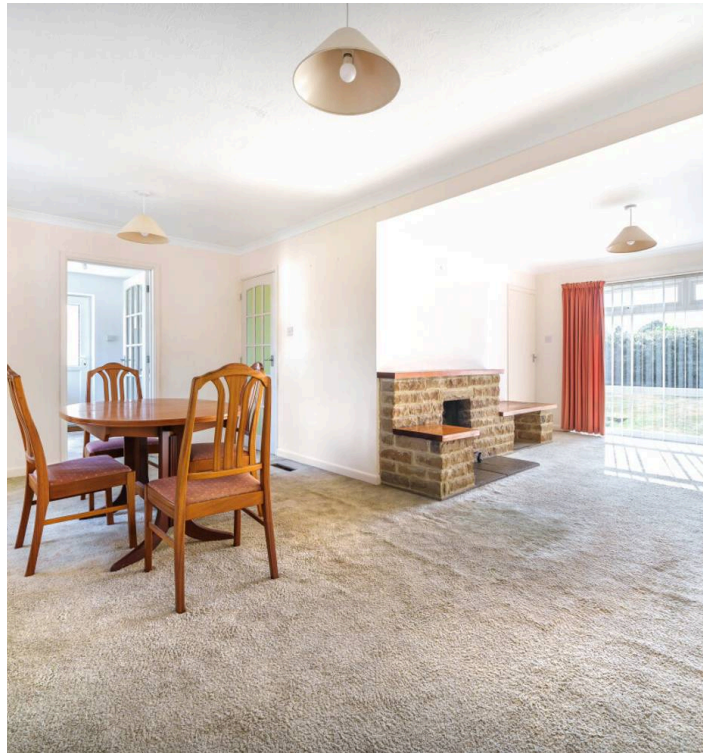
Selsey, Chichester

Presenting a rare opportunity to acquire a charming 3-bedroom detached house in need of modernisation, offered for sale with no forward chain. Upon entering the property, you are greeted by a spacious living/dining room, perfect for entertaining guests or enjoying quiet evenings in. The property features three generously sized double bedrooms, all equipped with storage space to accommodate your belongings effortlessly. Additionally, the property offers a versatile study/sun room, ideal for remote work or relaxation, a kitchen, bathroom and separate toilet.

Externally, the property includes the convenience of a garage and off-road parking, ensuring both security and space for multiple vehicles. The rear garden offers a private retreat with its lawn, path, shrubs and borders. This well-appointed home combines spacious accommodation with traditional charm, providing a warm and inviting ambience throughout. Don't miss the chance to make this delightful detached house your own, book your viewing today!

Council Tax: D, EPC Rating: D

- Detached House
- No Forward Chain
- Three Double Bedrooms with Storage Space
- Good Sized Living/Dining Room
- Study/Sun Room
- Garage and Off Road Parking



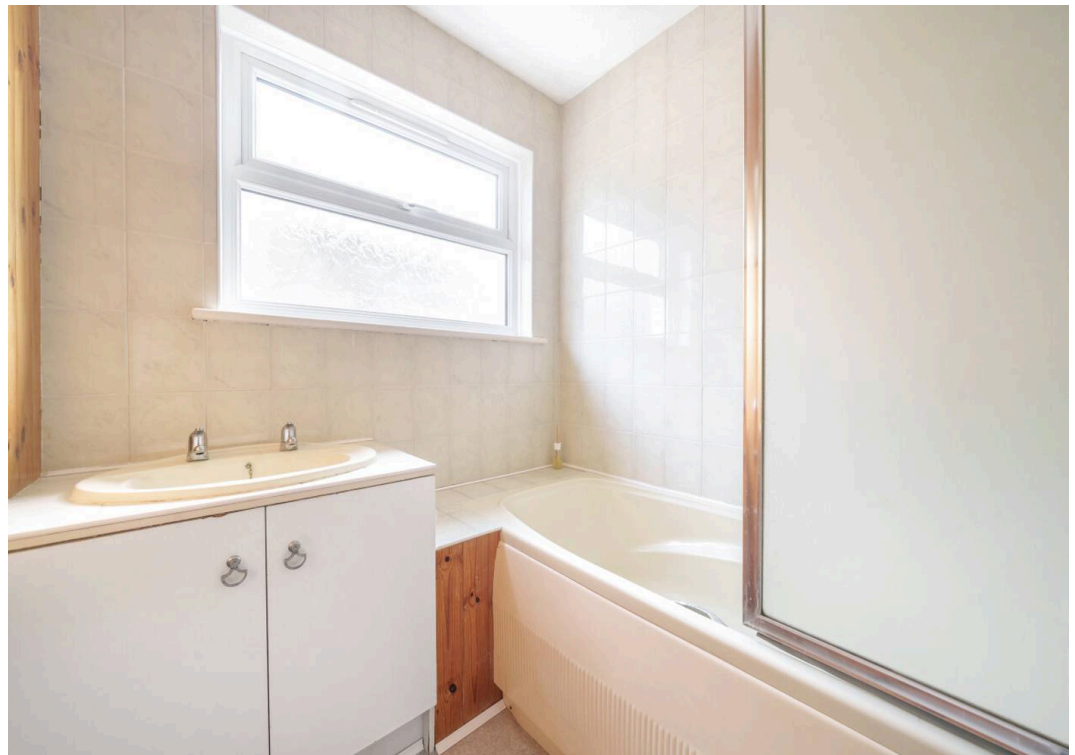


Approximate Area = 1190 sq ft / 110.5 sq m

Garage = 164 sq ft / 15.2 sq m

Total = 1354 sq ft / 125.7 sq m

For identification only - Not to scale





Henry Adams - Selsey

Henry Adams LLP, 122 High Street, Selsey - PO20 0QE

01243 606789 • selsey@henryadams.co.uk • www.henryadams.co.uk/

Agents Note - Our particulars are for guidance only and are intended to give a fair overall summary of the property. They do not form part of any contract or offer, and should not be relied upon as a statement or representation of fact. Measurements, areas and distances are approximate only. Photographs may include lifestyle shots and pictures of local views. No undertaking is given as to the structural condition of the property, or any necessary consents or the operating ability or efficiency of any