



19 Hubble Close, Selsey

Guide Price £450,000

19 Hubble Close

Selsey, Chichester

Offered for sale is this beautifully presented detached house, with the added benefit of an orangery to the rear.

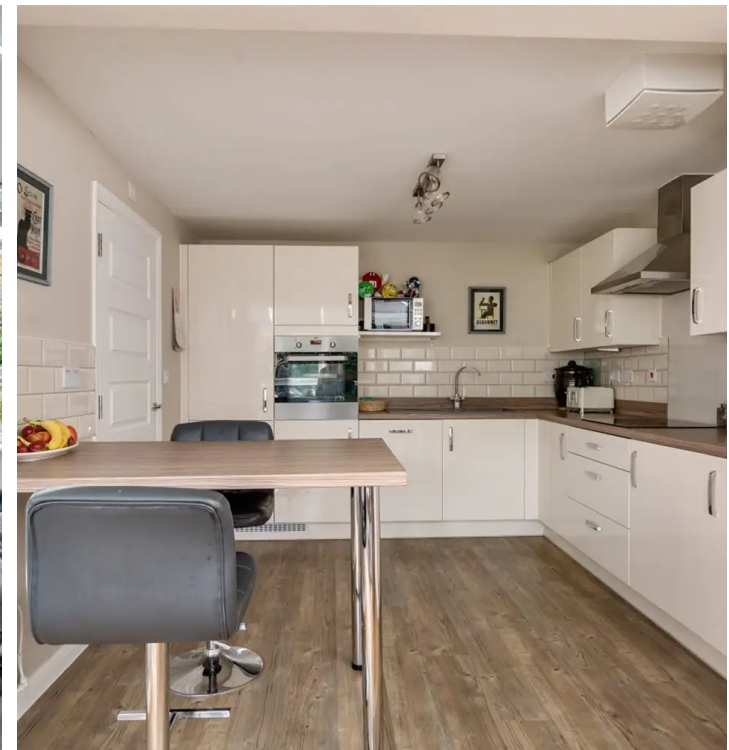
Built in 2018 the property benefits from the remainder of the 10yr NHBC warranty. Approaching the home via a pathway the double glazed front door opens to an entrance hall with doors to principle rooms which include: living room with double doors onto the rear patio, dining room/home Office, downstairs cloakroom and kitchen. Adjoining the kitchen is a beautiful orangery which works as a social second living space.

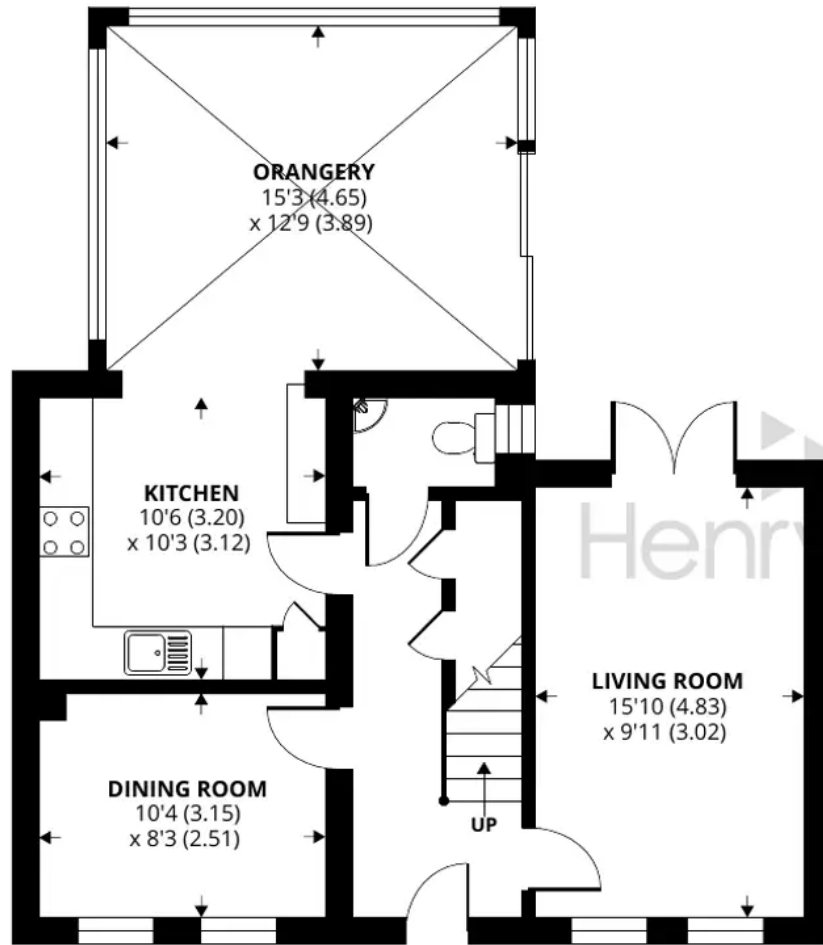
Upstairs, you will find the three bedrooms and family bathroom. Bedroom 1 benefits from having both an en-suite and built in double wardrobes with bedroom 2 also benefiting from a built in wardrobe. The current owner currently uses the 3rd bedroom as a dressing room and has fitted wardrobes.

Externally, the property benefits from a private westerly facing rear garden with a patio area, a turfed lawn to enjoy and whilst providing access to the driveway and garage a wooden workshop with light & power.

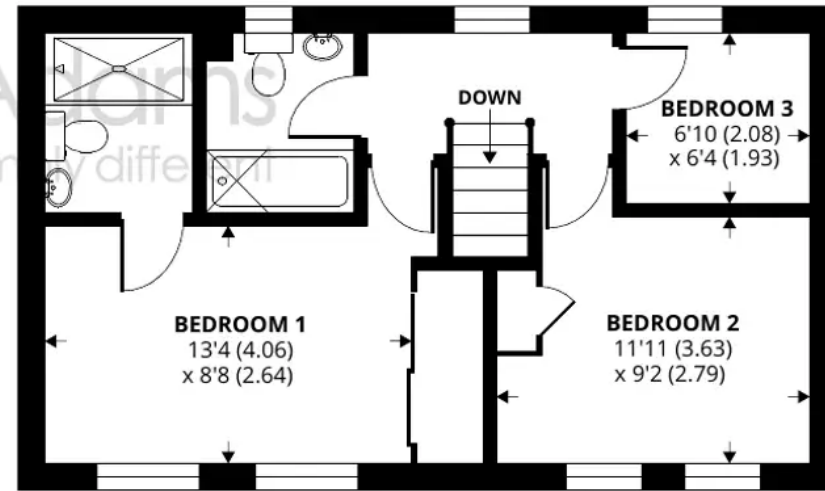
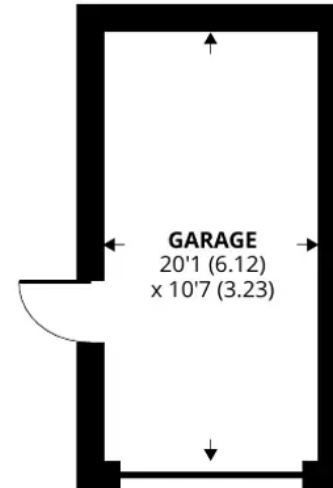
Council Tax: D, Freehold, EPC: B

- Beautifully Presented Detached House
- Three Bedrooms
- Living & Dining Rooms
- Kitchen Breakfast Room With Additional Orangery
- Garage with Light and Power
- Located within 700m of the beach





GROUND FLOOR



FIRST FLOOR

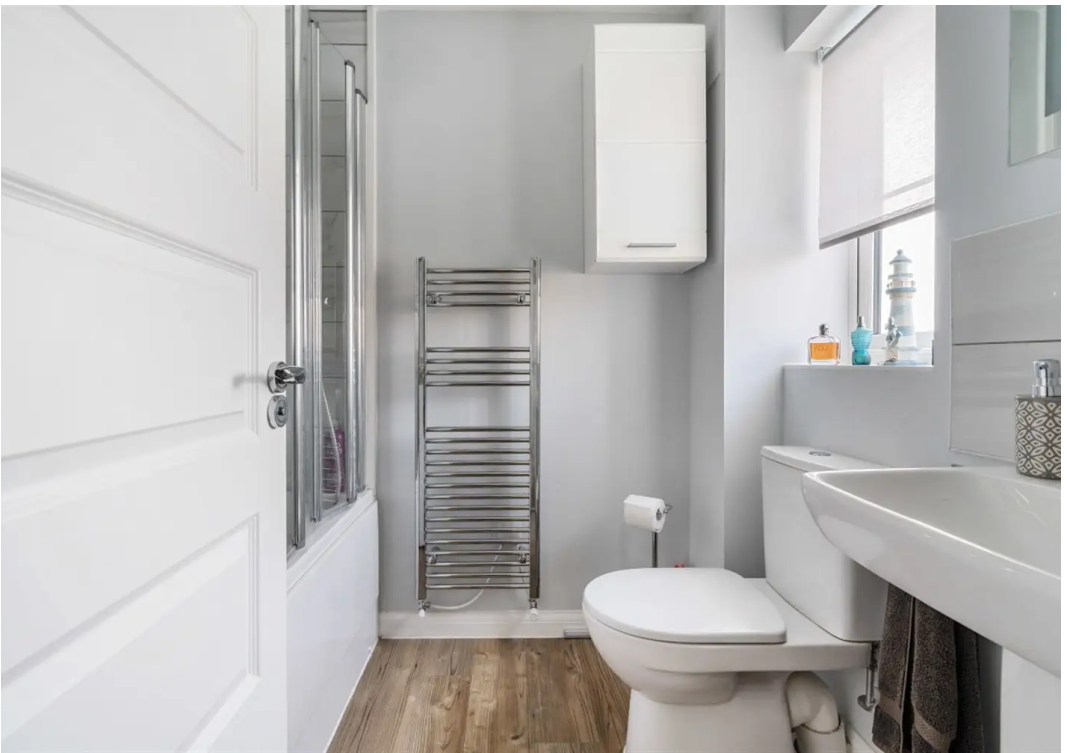
Hubble Close, Selsey, Chichester

Approximate Area = 1182 sq ft / 109.8 sq m (excludes garage)

For identification only - Not to scale



Floor plan produced in accordance with RICS Property Measurement Standards incorporating International Property Measurement Standards (IPMS2 Residential). © nchecon 2022. Produced for Henry Adams. REF: 856975





Henry Adams - Selsey

Henry Adams LLP, 122 High Street, Selsey - PO20 0QE

01243 606789 • selsey@henryadams.co.uk • www.henryadams.co.uk/

Agents Note - Our particulars are for guidance only and are intended to give a fair overall summary of the property. They do not form part of any contract or offer, and should not be relied upon as a statement or representation of fact. Measurements, areas and distances are approximate only. Photographs may include lifestyle shots and pictures of local views. No undertaking is given as to the structural condition of the property, or any necessary consents or the operating ability or efficiency of any