



66 Silver Birch Drive, Middleton-on-Sea

Guide Price £265,000

66 Silver Birch Drive

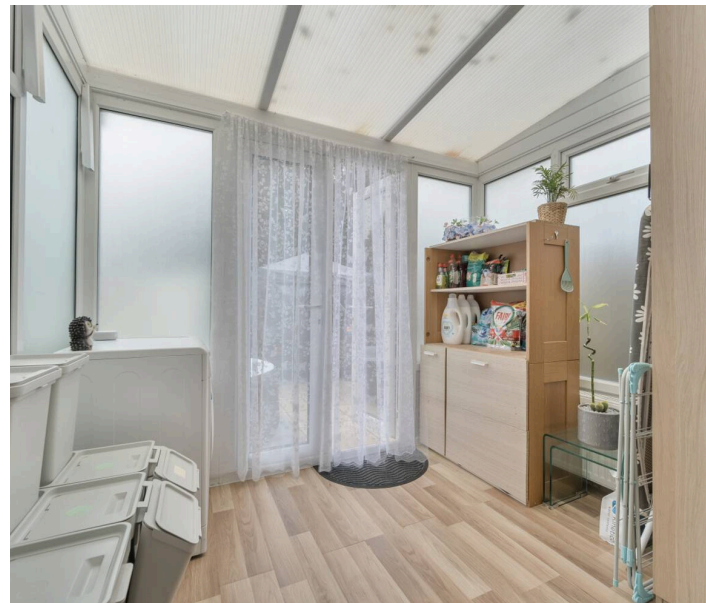
- Mid Terrace House
- Two Bedrooms
- Immaculate Throughout
- Ideal First Home
- Allocated Parking Space
- Low Maintenance Garden

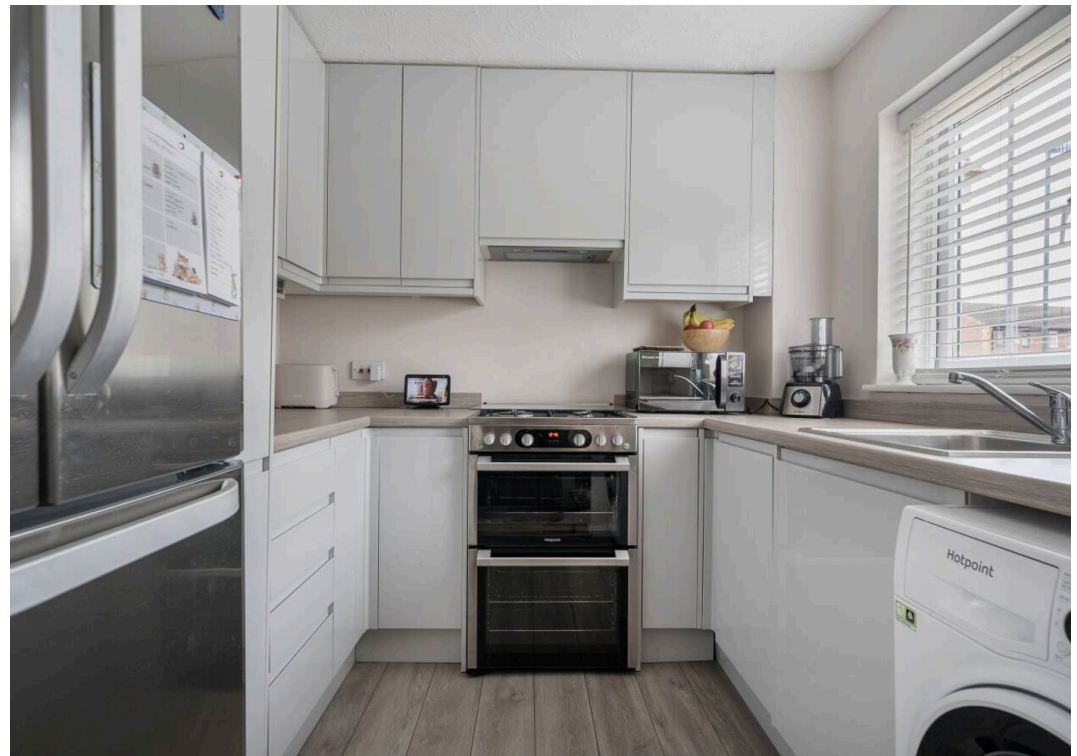
This charming two bedroom mid-terrace house is presented in immaculate condition throughout, appealing to both upsizers and downsizers alike.

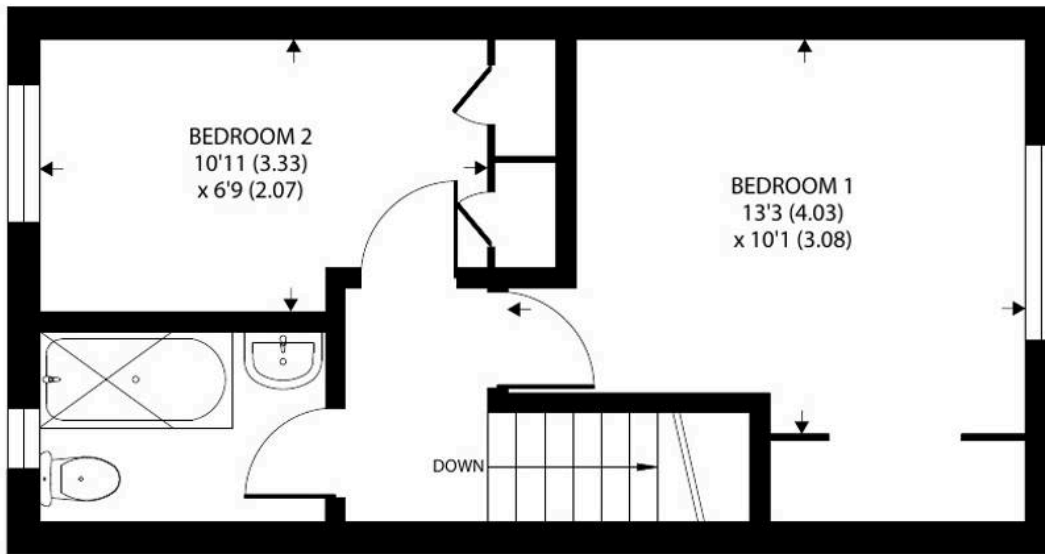
Internally, the accommodation is arranged as follows: Upon entry, the hall leads to the kitchen to the right, featuring a modern and sleek range of cabinetry, along with space for a washing machine, upright fridge/freezer, and cooker. The sitting room is bright and airy, connected to the conservatory, offering an additional area to unwind or dine while overlooking the rear garden.

Moving to the first floor, two bedrooms will be found, with the main bedroom being a good size and equipped with a built-in wardrobe for storage. A bathroom completes the internal layout.

Outside, the garden combines patio and artificial lawn areas and is designed for ease of maintenance. At the far end, a gate leads to an allocated parking space.







FIRST FLOOR



GROUND FLOOR

Silver Birch Drive, Bognor Regis

Approximate Area = 682 sq ft / 63.3 sq m

For identification only - Not to scale



Floor plan produced in accordance with RICS Property Measurement 2nd Edition, Incorporating International Property Measurement Standards (IPMS2 Residential). © ntechcom 2025. Produced for Henry Adams. REF: 1317804

The charming village of Middleton-on-Sea offers a wide range of local facilities including a doctors surgery, pharmacy, sports/social club, post office and a range of other useful shops. Nearby attractions include a golf club, sailing club and the beach.

What3Words ///purse.raking.cotton

Council Tax Band: C

Tenure: Freehold

EPC Energy Efficiency Rating: C





Henry Adams - Middleton on Sea

Henry Adams LLP, Old Bank House, 128 Middleton on Sea - PO22 6DB

01243 587687

middleton@henryadams.co.uk

www.henryadams.co.uk

Agents Note - Our particulars are for guidance only and are intended to give a fair overall summary of the property. They do not form part of any contract or offer, and should not be relied upon as a statement or representation of fact. Measurements, areas and distances are approximate only. Photographs may include lifestyle shots and pictures of local views. No undertaking is given as to the structural condition of the property, or any necessary consents or the operating ability or efficiency of any service, system or appliance. Please ask if you would like further information, especially before you travel to the property.