



129 Elmer Road, Elmer

Guide Price £325,000



# 129 Elmer Road

Two bedroom semi-detached bungalow offered with no forward chain.

- Semi-Detached Bungalow
- 681 Sq Ft of Accommodation
- No Forward Chain
- Two Double Bedrooms
- Modern Kitchen
- Enclosed Rear Garden
- Garage & Driveway
- Double Glazed & Gas Central Heating
- Close Proximity to the Beach

This well presented semi-detached bungalow is now offered for sale with the advantage of no forward chain and is located close to the seafront in the sought after village of Elmer.

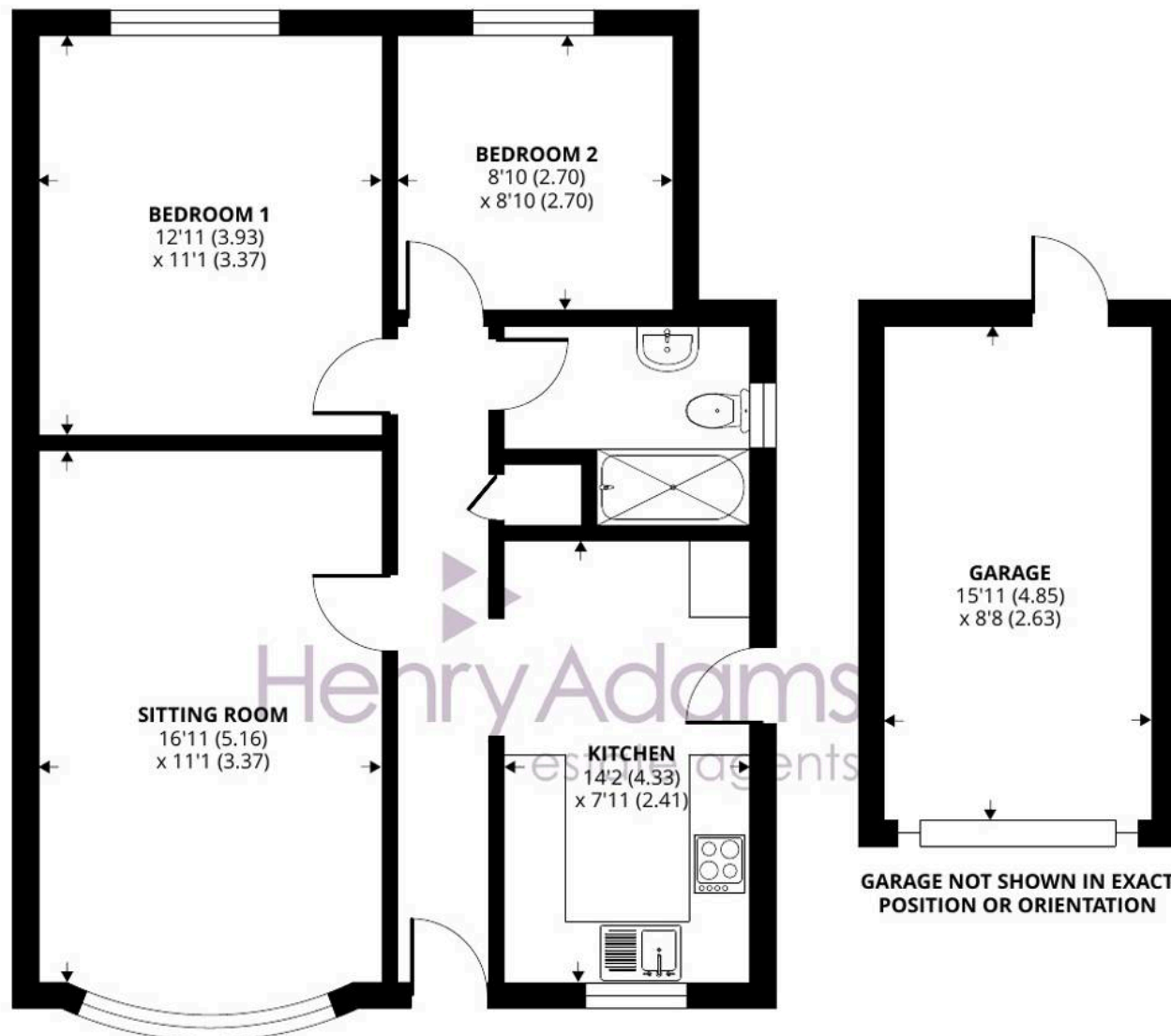
The accommodation measures 681 sq ft and briefly comprises, entrance hall, two double bedrooms, a spacious sitting room with bay window, modern fitted kitchen/dining room and lastly the bathroom.

Outside, there are front and rear gardens with the rear garden being mainly laid to lawn and offering a good level of privacy. There is also a garage and driveway providing off-road parking.









**GROUND FLOOR**

## Elmer Road, Bognor Regis

Approximate Area = 681 sq ft / 63.2 sq m

Garage = 137 sq ft / 12.7 sq m

Total = 818 sq ft / 75.9 sq m

For identification only - Not to scale



Floor plan produced in accordance with RICS Property Measurement 2nd Edition,  
Incorporating International Property Measurement Standards (IPMS2 Residential). © nichecom 2025.  
Produced for Henry Adams. REF: 1235924



Located close to the Middleton-on-Sea and Elmer boundary. There are some local facilities in close proximity including a convenience store, two pubs and a bus route. The charming village of Middleton-on-Sea offers a wider range of local facilities including a doctors surgery, pharmacy, sports/social club, post office and a range of other useful shops. Nearby attractions include Bognor Regis golf club, sailing club and an unspoilt beach. Historic Arundel, the cathedral city of Chichester and the famous Goodwood motor circuit and racecourse can all be found within approximately 11 mile radius.

What3Words ///equity.hips.allow

Council Tax Band: C

Tenure: Freehold

EPC Energy Efficiency Rating: C







## Henry Adams - Middleton on Sea

Henry Adams LLP, Old Bank House, 128 Middleton on Sea - PO22 6DB

01243 587687

[middleton@henryadams.co.uk](mailto:middleton@henryadams.co.uk)

[www.henryadams.co.uk](http://www.henryadams.co.uk)

Agents Note - Our particulars are for guidance only and are intended to give a fair overall summary of the property. They do not form part of any contract or offer, and should not be relied upon as a statement or representation of fact. Measurements, areas and distances are approximate only. Photographs may include lifestyle shots and pictures of local views. No undertaking is given as to the structural condition of the property, or any necessary consents or the operating ability or efficiency of any service, system or appliance. Please ask if you would like further information, especially before you travel to the property.