



6 Freya Close, Middleton-on-Sea

An immaculate ground floor beachfront apartment with sea views in Private Marine Estate.



1



2



2

EPC C

- ▶ Ground Floor Apartment
- ▶ Sea View From Property
- ▶ 999 Year Lease
- ▶ Kitchen & Sitting Room
- ▶ Two Shower Rooms
- ▶ Prime Beachfront Location
- ▶ Beach Access
- ▶ 678 SqFt of Accomodation
- ▶ Two Bedrooms
- ▶ Garage & Resident's Parking

Situated in the Saxon Reach Private Marine Estate just yards from the foreshore and with sea views from the sitting room and kitchen, this well presented ground floor apartment presents a fantastic opportunity for those wishing to live by the sea with one of the popular local beaches on your doorstep.

In total, the accommodation measures 678 sqft and is arranged as follows: the fitted kitchen is open plan to a bright and airy sitting room/dining room with lovely sea views across the green and doors leading out to the gardens. Additionally, there are two bedrooms and two shower rooms, one being en-suite to the principal bedroom.

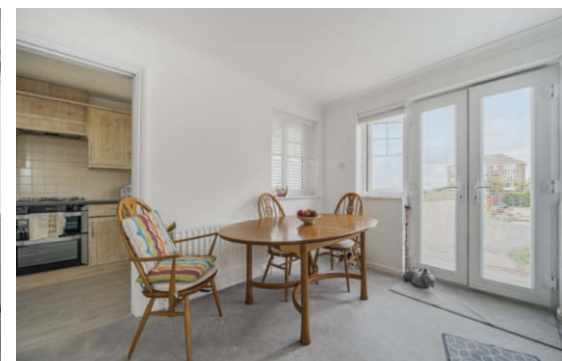
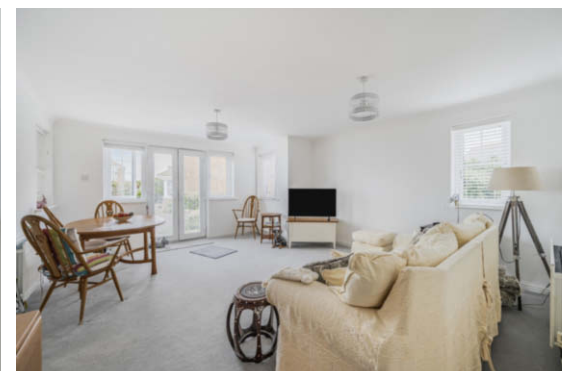
Outside, there are communal gardens and private residents parking in the nearby courtyard, along with the garage which has power and light. We understand the following:

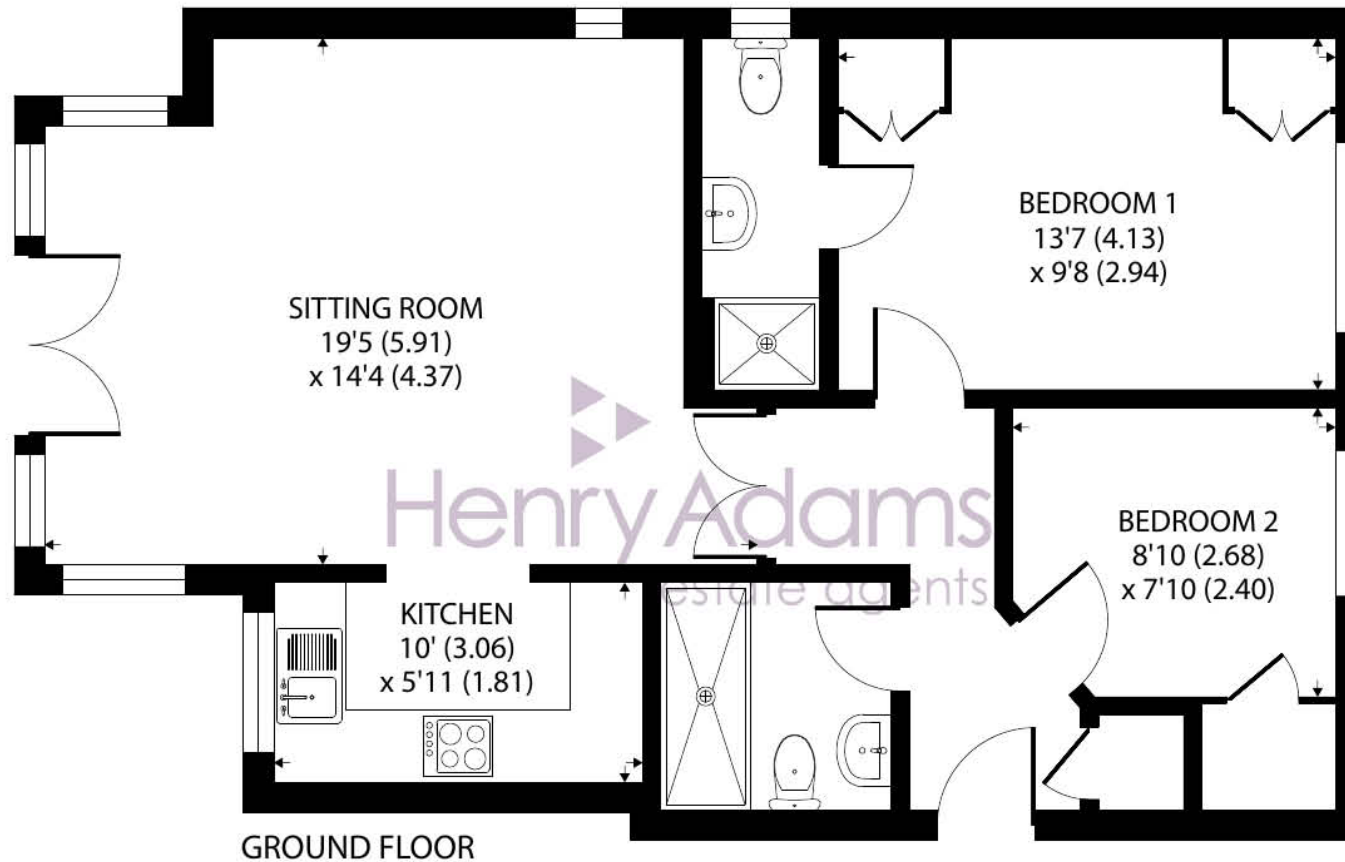
Tenure: Leasehold

Maintenance Charge: £2,410 per year

Ground Rent: Peppercorn

Council Tax Band: D





6 Freya Close, Bognor Regis, PO22 7UQ

Approximate Area = 678 sq ft / 62.9 sq m

For identification only - Not to scale



Floor plan produced in accordance with RICS Property Measurement Standards incorporating International Property Measurement Standards (IPMS2 Residential). © nichecom 2024. Produced for Henry Adams. REF: 1154633

Agents Note - Our particulars are for guidance only and are intended to give a fair overall summary of the property. They do not form part of any contract or offer, and should not be relied upon as a statement or representation of fact. Measurements, areas and distances are approximate only. Photographs may include lifestyle shots and pictures of local views. No undertaking is given as to the structural condition of the property, or any necessary consents or the operating ability or efficiency of any service, system or appliance. Please ask if you would like further information, especially before you travel to the property.

Location

The Saxon Reach private estate is located in the charming village of Middleton-on-Sea and offers a wide range of local facilities including a primary school, doctors surgery, pharmacy, sports/social club, post office and a range of useful shops, café, fish and chip shop and a pub. Nearby attractions include Bognor Regis Golf Club, a sailing club and the unspoilt beach. A regular bus service links the village to Bognor Regis which offers a more comprehensive range of amenities. Historic Arundel, the cathedral city of Chichester and the famous Goodwood motor circuit and racecourse can all be found within an 11 mile radius.

What3Words ///basis.ally.curve

29/07/24

