



Plot 9 The Esher Hale Road, Benson, OX10 6NF
£480,000 Freehold

THOMAS
MERRIFIELD
SALES LETTINGS



The Property

•• EARLY BIRD DEPOSIT BOOST OF £20,000 ••

THE ESHER by Bewley Homes a ••THREE BEDROOM TWO BATHROOM HOME•• A stunning home offering generous living space and a fantastic internal specification.

The Esher combines modern design with practical living for contemporary lifestyles.

The ground floor features a stylish kitchen with integrated appliances, a dining area with French doors to the garden and a separate living room. A cloakroom and storage add convenience.

On the first floor are three bedrooms offering flexibility, including two doubles, whilst the third bedroom doubles as a home office. The Principal Bedroom boasts an en-suite and fitted wardrobes.

Allocated parking completes this elegant, functional home.

Deposit Boost is available on selected 2 and 3 bedroom homes, up to a maximum of £20,000. Must be agreed at time of reservation and can be withdrawn without prior notice. Reservation must be made by the 30th May 2025

Anticipated completion Autumn 2025



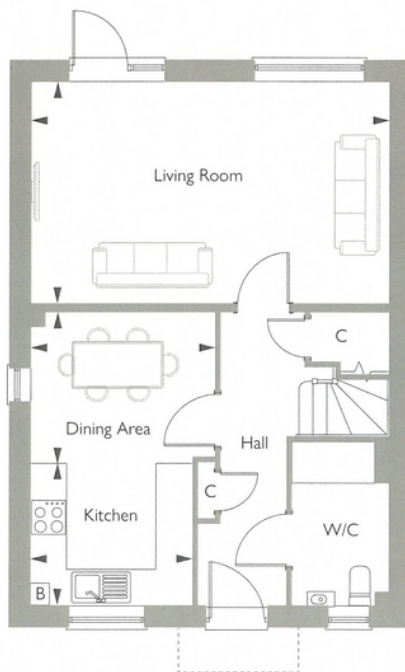


Key Features

- EARLY BIRD DEPOSIT BOOST £20,000
- Three bedroom, two bathroom house by Bewley Homes
- 10 Year NHBC Warranty
- Kitchen/dining area
- Parking
- Anticipated completion Autumn 2025

The Location

Situated in the highly sought-after Benson Village, you'll have everything you need right on your doorstep. Explore the local amenities, including co-op store, cafes, local shops and friendly neighbourhood pubs. There's also the local primary school and the recreation fields plus the local tennis club are just around the corner. Visit the village centre or take a leisurely stroll to the River Thames and enjoy a drink or two at the Waterfront Cafe.

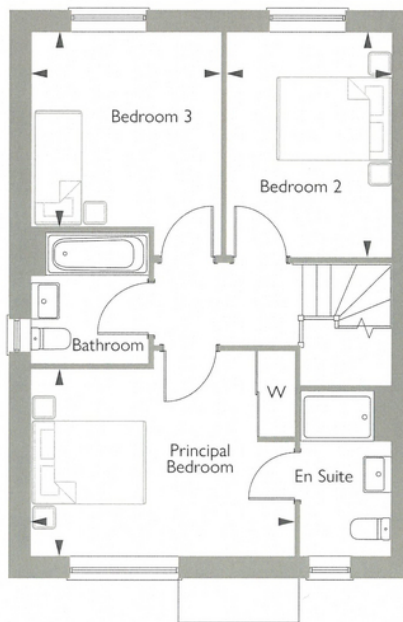


GROUND FLOOR

Living Room	5.93m x 3.64m	19'5" x 11'11"
Kitchen	2.68m x 2.35m	8'9" x 7'9"
Dining Area	3.05m x 2.49m	10'0" x 8'2"

Total Area 1100.93ft²

Plot 51 is a detached home



FIRST FLOOR

Principal Bedroom	4.34m x 3.09m	14'3" x 10'1"
Bedroom 2	3.69m x 2.71m	12'1" x 8'10"
Bedroom 3	3.20m x 3.12m	10'6" x 10'3"

*Denotes handed plot. B denotes boiler. C denotes cupboard. W denotes wardrobe. ◀ Point from which dimensions are taken. All measurements are approximate and where imperial measurements are shown, these are rounded to the nearest 3 inches. Bewley Homes reserves the right to vary as necessary to complete the works. Computer generated image of The Ether house type is indicative only. External elevational finishes will vary. Landscaping is shown as a guide only. Furniture layouts are indicative only and may vary.

BEWLEY
HOMES

Thomas Merrifield and their clients give notice that:

1. They are not authorised to make or give any representations or warranties in relation to the property either here or elsewhere, either on their own behalf or on behalf of their client or otherwise. They assume no responsibility for any statement that may be made in these particulars. These particulars do not form any part of any offer or contract and must not be relied upon as statements or representations of fact.

2. Any areas, measurements or distances are approximate. The text, photographs and plans are for guidance only and are not necessarily comprehensive. It should not be assumed that the property has all necessary planning, building regulation or other consents and Thomas Merrifield have not tested any services, equipment or facilities. Purchasers must satisfy themselves by inspection or otherwise.

Didcot Office
103 Broadway, Didcot
Oxfordshire, OX11 8AL

T 01235 813 777
E didcot@thomasmerrifield.co.uk
W thomasmerrifield.co.uk

THOMAS
MERRIFIELD
SALES LETTINGS