

Westwood Gardens, Wymondham, Norfolk

£275,000

3 1 2



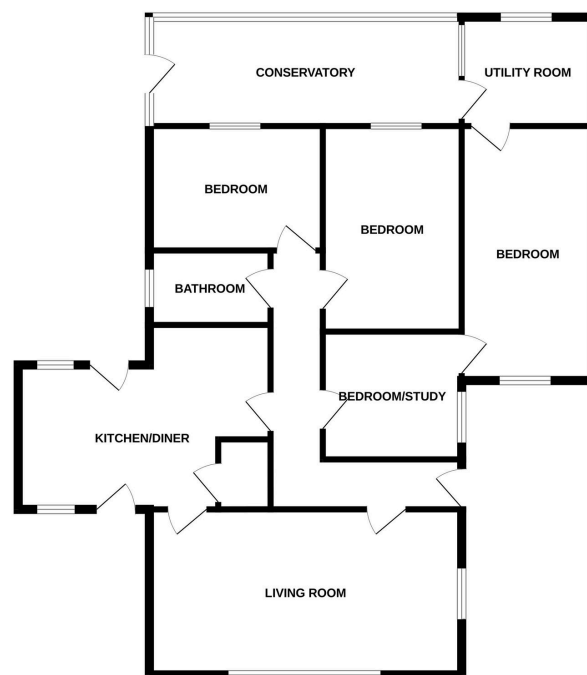
Moneyproperties present this spacious detached three / four bedroom bungalow sitting on a generous plot 120ft x 45ft with brick weave parking for 3/4 cars, there is no forward chain so a quick sale would be possible. This spacious bungalow offers approximately 1200 sq ft of living space comprising of entrance hall, living room, extended 16ft 5in kitchen, family bathroom, three double bedrooms, a possible bedroom four by utilising the study that leads into bedroom one, which is the converted garage, with utility room to the rear. Outside you have a generous 120ft x 45ft plot, car port, 45ft x 45ft fully enclosed rear garden.

Tenure: Freehold EPC: D Council Tax: C

Key Features

- Spacious detached 3/4 bedroom bungalow offering approximately 1200 sq ft of living space
- Fully enclosed rear garden with lawn area, patio area and garden shed 8ft x 6ft
- Located in a quiet cul de sac with open field at the bottom of the close
- Regular bus and rail services to Norwich, Cambridge and London
- No forward chain / quick sale
- Sitting on a generous plot 120ft x 45ft with ample parking for 3/4 cars
- Opportunity to create extra bedroom and en suite bathroom if needed
- Walking distance from the historic town centre with all its amenities
- Easy access to the main A11 and A47 for those commuting by road
- See our full online listing for further details including flood risk, broadband speed and other material information

GROUND FLOOR



Whilst every attempt has been made to ensure the accuracy of the description contained here, measurements of doors, windows, rooms and any other items are approximate and no responsibility is taken for any error, omission or mis-statement. This plan is for illustrative purposes only and should be used as such by any prospective purchaser. The services, systems and appliances shown have not been tested and no guarantee as to their operability or efficiency can be given.
Made with Metropac C0205