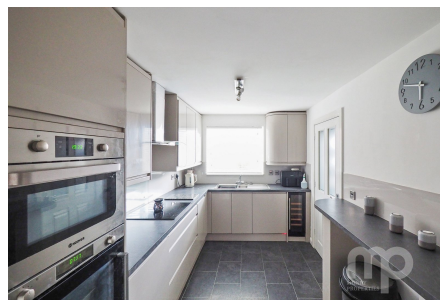


Kingfisher Road, Attleborough, NR17

Offers In Region Of £416,500

4 3 2

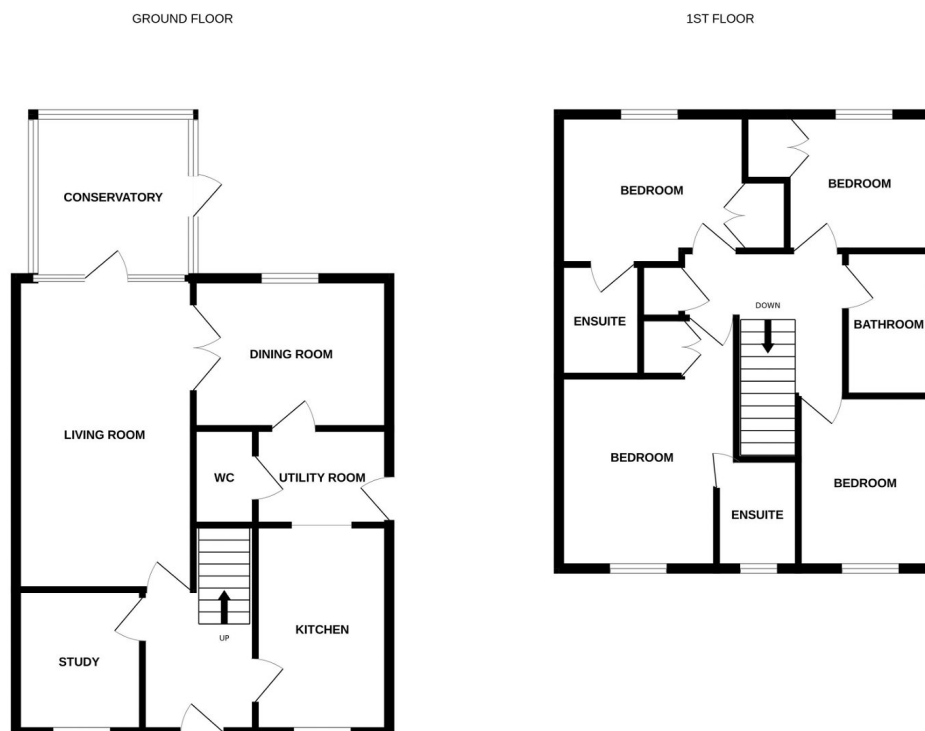


Moneyproperties bring to market this spacious four-bedroom detached family home located within ease of access to Attleborough town centre. This well-proportioned property comprises of an entrance hall, 18ft living room with separate dining room, generous kitchen leading through to the utility room and downstairs wc. The downstairs also benefits from a study ideal for those working from home and a conservatory. There are four bedrooms, two with ensembles and built in wardrobes to three of the four bedrooms along with a family bathroom. The property enjoys a low maintenance rear garden, ample off-road parking and a tandem garage. No onward chain.

Tenure: Freehold EPC: TBC Council Tax: D

Key Features

- Spacious four bedroom detached family home with no onward chain!
- Generous living room leading to the conservatory
- Study ideal for those working from home
- 50ft low maintenance rear garden
- Located on a popular residential development
- Ideally located for ease of access to the town centre, amenities and schools
- Good-sized kitchen with separate utility and dining room
- Four well-proportioned bedrooms two with ensuites
- Tandem garage with off-road parking
- See our online listing for further details including flood risk, broadband speed and other material information.



Whilst every attempt has been made to ensure the accuracy of the floorplan contained here, measurements of doors, windows, rooms and any other items are approximate and no responsibility is taken for any error, omission or mis-statement. This plan is for illustrative purposes only and should be used as such by any prospective purchaser. The services, systems and appliances shown have not been tested and no guarantee as to their operability or efficiency can be given.
Made with Metropix ©2024