

Snetterton North End, Snetterton, Norwich, NR16 2LD

Offers In Region Of £725,000

5 2 2



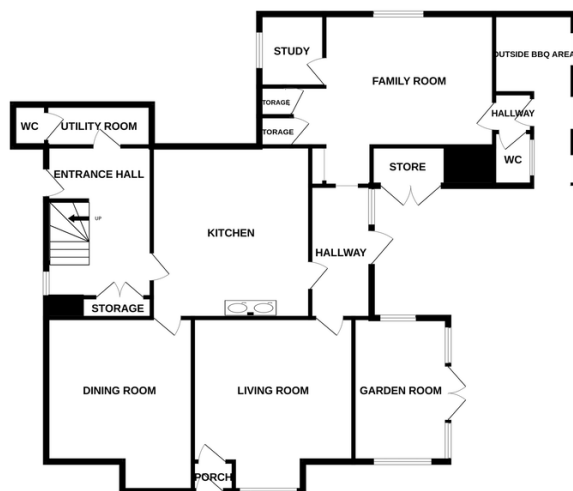
Steeped in history and charm, The Old School House in Snetterton offers a unique opportunity to own a striking period residence dating back to 1826. Built by Reverend Edward Southwell Keppel, this distinctive property once served the local parish as a place of learning and has since been tastefully converted into a beautifully appointed family home, which is partially renovated hence price. Set within the peaceful surroundings of rural Norfolk, the property retains many of its original features.

Tenure: Freehold EPC: F Council Tax: F

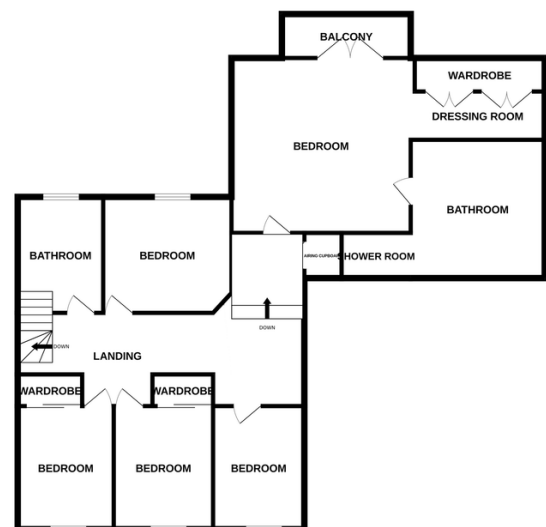
Key Features

- Rare opportunity to purchase a piece of Norfolk history
- The property once served the local parish as a place of learning
- Offering approximately 2500 sq ft of living space with potential to extend (stpp)
- Has been partially renovated hence price / Second fixings and decoration required
- Side plot 90ft x 70ft with swimming pool, BBQ area, ideal for entertaining
- The Old School House, Snetterton was built in 1826 by Rev Keppel
- Has been tastefully converted into a beautifully appointed family home.
- Sitting on a generous 0.50 acre plot with potential 100ft x 40ft building plot (stpp)
- Well placed for the Snetterton Race Course, Service centre with eateries and main A11 for commuting
- See our full online listing for further details including flood risk, broadband speed and other material information

GROUND FLOOR



1ST FLOOR



Whilst every attempt has been made to ensure the accuracy of the floorplan contained here, measurements of doors, windows, rooms and any other items are approximate and no responsibility is taken for any error, omission or mis-statement. This plan is for illustrative purposes only and should be used as such by any prospective purchaser. The services, systems and appliances shown have not been tested and no guarantee as to their operability or efficiency can be given.
Made with Metropix ©2025