

Pople Street, Wymondham, NR18 0PS

Offers In Region Of £350,000

3 2 2

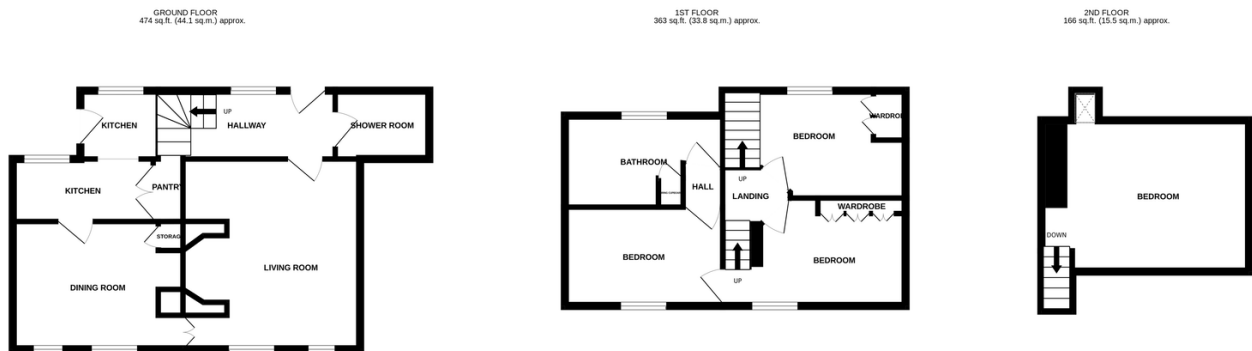


A Rare Opportunity to Own a Piece of Wymondham's History. Steeped in heritage, this delightful Georgian town centre cottage on Pople Street (originally "People Street") dates back to 1797. Once two separate cottages, it was thoughtfully converted into one in 1987 by a highly regarded local builder, who carefully preserved its character, retaining the original beams and lovingly reconstructing the impressive inglenook fireplace that now forms the heart of the home. Please note the garden is bisected by a right of way for the next door property.

Tenure: Freehold EPC: D Council Tax: C

Key Features

- A Rare Opportunity to Own a Piece of Wymondham's History
- Offering approximately 1,200 sq. ft. of versatile living space
- The property occupies a generous 110ft x 40ft plot
- Ideally placed for the town centre with all its amenities
- Regular bus and rail services to Norwich and Cambridge
- A delightful Georgian town centre three / four bedroom cottage on Pople Street
- Full of original character with exposed beams and an inglenook fireplace
- With 22ft garage and 10ft brick built garden shed plus off road parking
- Sought after local schools with GOOD ofsted reports
- See our full online listing for further details including flood risk, broadband speed and other material information.



TOTAL FLOOR AREA : 1004 sq.ft. (93.3 sq.m.) approx.

Whilst every attempt has been made to ensure the accuracy of the floorplan contained here, measurements of doors, windows, rooms and any other items are approximate and no responsibility is taken for any error, omission or mis-statement. This plan is for illustrative purposes only and should be used as such by any prospective purchaser. The services, systems and appliances shown have not been tested and no guarantee as to their operability or efficiency can be given.
Made with Metropix ©2025