

High House Avenue, Wymondham, Norfolk

Offers In Region Of £240,000

3 1 2



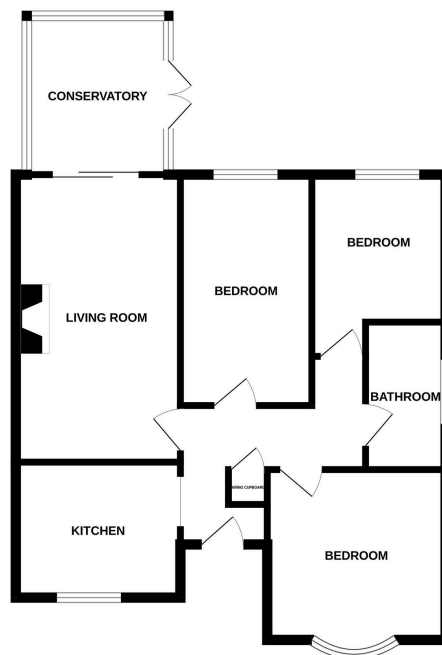
Moneyproperties is delighted to present this rare opportunity to purchase a detached three-bedroom bungalow in a desirable location, overlooking an open green space with trees. The property offers approximately 750 sq ft of living space, including an entrance porch, a well-proportioned kitchen, and a spacious 15ft 11in living room with patio doors leading to a bright conservatory. The bungalow features three bedrooms and a family bathroom, making it ideal for families or downsizers. Set on a generous 75ft x 35ft plot, the outside provides a 15ft frontage with low-maintenance artificial grass, parking for 3/4 cars, garage, and a 40ft rear garden.

Tenure: Freehold EPC: D Council Tax: C

Key Features

- Detached three bedroom bungalow sitting on a 75ft x 35ft plot
- Overlooking a large green space to the front of the property
- Offering approximately 750 sq ft of living space including conservatory
- In need of some updating hence the price
- No onward chain so a quick sale would be possible
- Single garage and parking for 3/4 cars on the 30ft drive
- Close to local amenities and minutes from the town centre
- Walking distance from sought after Wymondham High school
- Easy access to the main A11 for those commuting to work by car
- See our full online listing for further details including flood risk, broadband speed and other material information.

GROUND FLOOR



Whilst every attempt has been made to ensure the accuracy of the floorplan contained here, measurements of doors, windows, rooms and any other items are approximate and no responsibility is taken for any error, omission or misstatement. This plan is for illustrative purposes only and should be used as such by any prospective purchaser. The services, systems and appliances shown have not been tested and no guarantee as to their operability or efficiency can be given.
Made with Metropix C2024