

## Fiona Close, Wymondham, Norfolk, NR18 0HB

£525,000

3 2 2



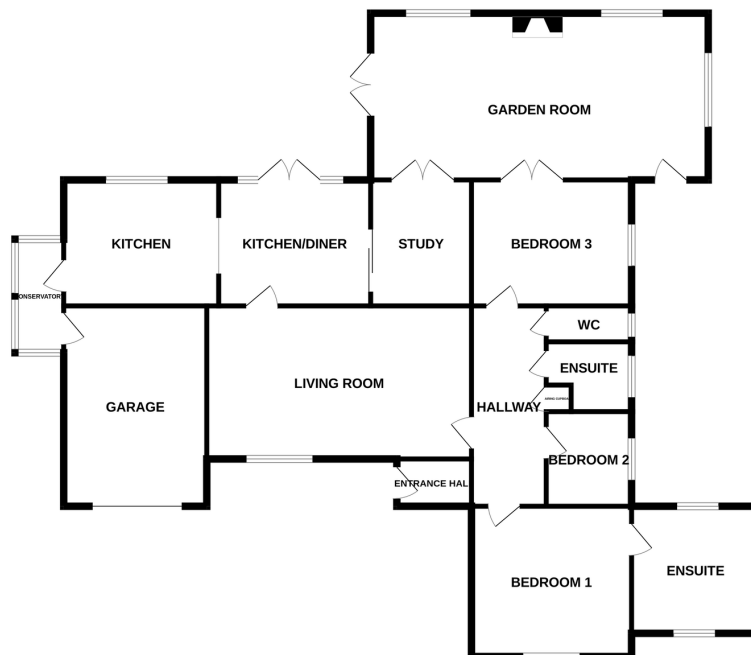
Moneyproperties are delighted to be marketing this generous family home which would also be ideal for those seeking to retire to the Historic town of Wymondham . Being located in a quiet close ensures no passing traffic and relative safety if you have children and pets. The versatile accommodation comprises of an entrance porch, hallway, spacious living room, three double bedrooms with one en suite, kitchen, dining area, study / office, shower room, separate wc, large single garage / workshop not forgetting the outstanding 26ft Garden room which could lend itself to become a studio / annex or family room.

**Tenure: Freehold EPC: C Council Tax: D**

## Key Features

- Spacious 3 Bedroom Detached Bungalow situated within a generous L shaped plot of approximately 26m x 23m
- Offering approximately 280m<sup>2</sup> ( 3013sq ft )of living space
- Double doors to the rear garden and single access to the side which could lend itself to become an annex or studio.
- Large 16.74m<sup>2</sup> (180sq ft )single garage / workshop and a drive way to accommodate 2/3 cars
- Walking distance from all Primary Schools and sought after Wymondham High with GOOD ofsted
- Located in a quiet close in the very much sought-after historic town of Wymondham
- Tastefully extended to create the outstanding 32m<sup>2</sup> ( 344sq ft ) Garden Room Double doors to the rear garden
- The Kitchen / Diner opens out onto the rear garden making it absolutely ideal for entertaining
- Ideally located for all that this Historic Norfolk Market Town has to offer
- See our full online listing for further details including flood risk, broadband speed and other material information

GROUND FLOOR  
1742 sq.ft. (161.9 sq.m.) approx.



TOTAL FLOOR AREA: 1742 sq.ft. (161.9 sq.m.) approx.

Whilst every effort has been made to ensure the accuracy of the floorplan contained here, measurements of doors, windows, rooms and any other items are approximate and no responsibility is taken for any error, omission or mis-statement. This plan is for illustrative purposes only and should be used as such for any prospective purchaser. The services, systems and appliances shown have not been tested and no guarantee as to their operability or efficiency can be given.  
Made with Metropix ©2025