

Briton Way, Wymondham, Norfolk

Offers In Region Of £160,000

1 1 0



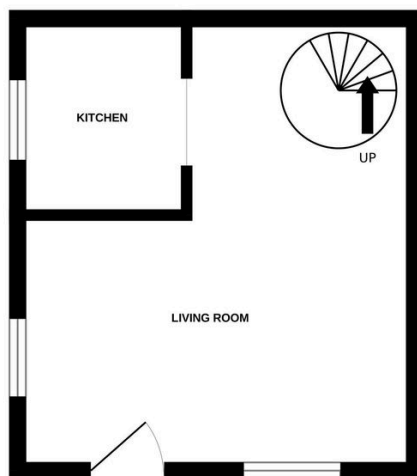
Charming One-Bedroom Semi-Detached Home with Abbey Views, No Onward Chain so a quick sale would be possible. Tucked away in a peaceful and sought-after location, this delightful one-bedroom semi-detached house enjoys stunning views over the historic Wymondham Abbey. Just a short stroll from the historic town centre, you will have easy access to a range of amenities including shops, cafes, and regular rail and bus links to Norwich and Cambridge. Ideal for commuters, the property also offers excellent road connections via the nearby A11.

Tenure: Freehold EPC: C Council Tax :A

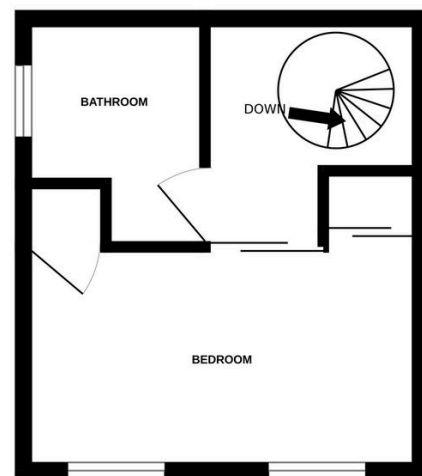
Key Features

- Semi detached one bedroom house in quiet location
- Sitting on a plot 60ft x 15ft with two parking spaces
- Walking distance from the historic town centre with all its amenities
- Easy access to the main A11 for those commuting by road
- Ideal home for a young or elderly couple / single person looking to be close to all amenities
- Offering approximately 450 sq ft of living space
- Well presented throughout views of the Wymondham Abbey
- Minutes from the towns railway station with regular services to Norwich and Cambridge
- No forward chain / quick sale possible
- See our full online listing for further details including flood risk, broadband speed and other material information.

GROUND FLOOR



1ST FLOOR



Whilst every attempt has been made to ensure the accuracy of the floorplan contained here, measurements of doors, windows, rooms and any other items are approximate and no responsibility is taken for any error, omission or mis-statement. This plan is for illustrative purposes only and should be used as such by any prospective purchaser. The services, systems and appliances shown have not been tested and no guarantee as to their operability or efficiency can be given.
Made with Metropix ©2025