

Lupin Close, Wymondham, NR18

Offers In Region Of £360,000

5 3 1



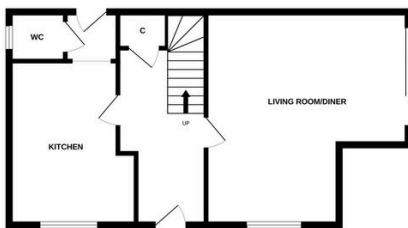
Moneyproperties are delighted to bring to market this stylish and modern five bedroom detached family home located on a popular residential development. Set across three floors the property comprises of a generous living room/diner with patio doors leading to the rear garden, recently fitted kitchen/breakfast room and wc. To the first floor comes a generous principal bedroom with built in wardrobes and an ensuite along with a family bathroom and two further bedrooms. The second-floor benefits from two further double bedrooms and a shower room. Outside the property enjoys an enclosed garden with a single garage and off-road parking to the driveway.

Tenure: Freehold EPC: C Council Tax: D

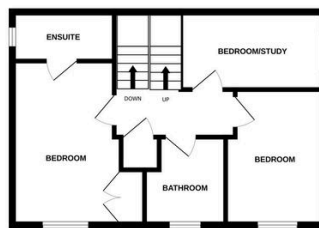
Key Features

- Stylish and modern detached family home
- Ensuite and built in wardrobes to bedroom one
- Generous 18ft living room/diner leading to the garden
- Enclosed lawn laid garden with patio area
- Vendors have found!!
- Five well-proportioned bedrooms with bedroom five doubling as a study
- Updated kitchen/breakfast room and bathrooms
- Located on a popular residential development
- Single garage with off-road parking and EV charging point
- See our full online listing for further details including flood risk, broadband speed and other material information.

GROUND FLOOR



1ST FLOOR



2ND FLOOR



Whilst every attempt has been made to ensure the accuracy of the floorplan contained here, measurements of doors, windows, rooms and any other items are approximate and no responsibility is taken for any error, omission or mis-statement. This plan is for illustrative purposes only and should be used as such by any prospective purchaser. The services, systems and appliances shown have not been tested and no guarantee as to their operability or efficiency can be given.
Made with Metropix ©2025