


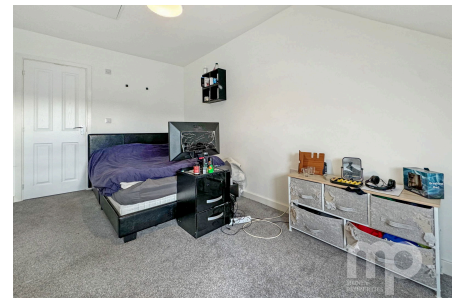


Reeve Way, Wymondham, NR18

£259,500

 3  2  1



Moneyproperties bring to market this well-presented terraced house located on a popular residential development in Wymondham. Set across three floors and bought from new in 2020, by the current vendors, the property enjoys an entrance porch, 14ft living room, modern kitchen/diner and downstairs wc. To the second floor comes two double bedrooms and a family bathroom with bedroom one located on the second floor benefiting from a spacious ensuite. Outside the property provides a private, enclosed rear garden and allocated off-road parking for x2 cars.

Tenure: Freehold EPC: B Council Tax: C

Key Features

- Well-presented three bedroom terraced house
- Set across three floors and bought from new in 2020
- Spacious living room with modern kitchen/diner
- Allocated off-road parking for x2 cars
- Remaining NHBC on the property
- Three double bedrooms with an ensuite to bedroom one
- Located on a popular residential development
- Private and enclosed rear garden with patio area
- Within ease of access to the A11 and local amenities
- See our full online listing for further details including flood risk, broadband speed and other material information.



Whilst every attempt has been made to ensure the accuracy of the floorplan contained here, measurements of doors, windows, rooms and any other items are approximate and no responsibility is taken for any error, omission or mis-statement. This plan is for illustrative purposes only and should be used as such by any prospective purchaser. The services, systems and appliances shown have not been tested and no guarantee as to their operability or efficiency can be given.
Made with Metropix ©2024