

## 10 St. Leonards Close, Wymondham, Norfolk

£350,000

3 1 1



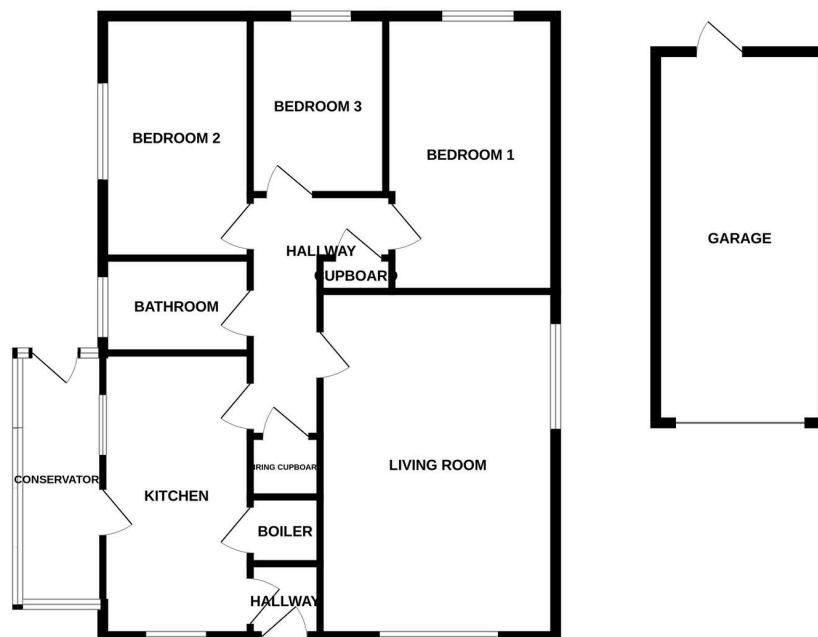
Moneyproperties is delighted to present this detached three-bedroom bungalow situated at the end of a quiet cul-de-sac. The property provides approximately 1,000 sq. ft. of living space and sits on a generous 120ft x 50ft corner plot, single garage and off-road parking, within walking distance of sought-after local schools and the town centre. Featuring an entrance porch, kitchen/breakfast room, conservatory, living room, three bedrooms, and a bathroom. Perfect for a family wanting proximity to top schools in a safe, cul-de-sac setting, or for an elderly couple seeking single-level convenience.

**Tenure: Freehold EPC: D Council Tax: C**

## Key Features

- Detached three bedroom bungalow in a sought after cul de sac
- Being sold with no forward chain.
- Offering approximately 1000 sq ft of living space with opportunity to extend
- Single garage and off road parking available
- Perfect for anyone seeking single-level convenience and privacy
- Walking distance from sought after schools and town centre amenities
- Sitting on a generous 120ft x 50ft plot with single garage and off road parking
- Variety of secluded gardens and seating areas, enriched with a vibrant array of plants, shrubs, and trees.
- Ideal home for family wanting proximity to top schools in a safe, cul-de-sac setting
- See our full online listing for further details including flood risk, broadband speed and other material information.

GROUND FLOOR



Whilst every attempt has been made to ensure the accuracy of the floorplan contained here, measurements of doors, windows, rooms and any other items are approximate and no responsibility is taken for any error, omission or mis-statement. This plan is for illustrative purposes only and should be used as such by any prospective purchaser. The services, systems and appliances shown have not been tested and no guarantee as to their operability or efficiency can be given.  
Made with Metropix ©2024