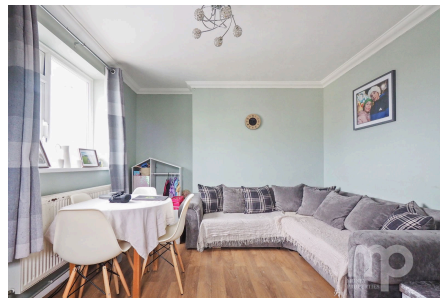


## Rogers Close, Norwich

Guide £140,000 - £150,000

2 1 1



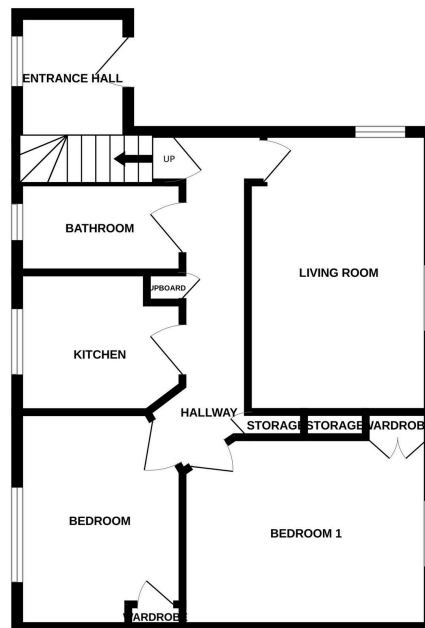
**\*\*\* Guide price of £140,000 - £150,000\*\*\*** Moneyproperties present this spacious two bedroom first floor apartment offering approximately 800 sq ft of living space, garden 35ft x 30ft, storage shed and further garden space 25ft x 10ft. This first floor apartment comprises of entrance hall with stairs leading to living room, kitchen, two double bedrooms and bathroom with ample storage space throughout. The property is well positioned for those needing easy access to the main A47 and A11 for commuting to work by road, just twelve minutes drive into the City of Norwich with all its amenities including Norwich bus and rail stations.

**Tenure: Leasehold EPC: C Council Tax: A**

## Key Features

- **\*\*\*Guide price of £140,000 - £150,000\*\*\***  
Spacious two bedroom first floor apartment
- Walking distance from Earlham and Eaton parks with outdoor facilities
- Twelve minutes drive to the city centre with all its amenities
- 10ft brick built and secure storage shed
- Offering approximately 800 sq ft of living space
- Close to the University of East Anglia and University Hospital
- Regular bus and rail services from the city centre stations
- Well positioned for access to the main A47 and A11 for commuting by road
- Rear Garden 35ft x 30ft with additional 25ft x 10ft to the front
- See our full online listing for further details including flood risk, broadband speed and other material information.

GROUND FLOOR



Whilst every attempt has been made to ensure the accuracy of the floorplan contained here, measurements of doors, windows, rooms and any other items are approximate and no responsibility is taken for any error, omission or mis-statement. This plan is for illustrative purposes only and should be used as such by any prospective purchaser. The services, systems and appliances shown have not been tested and no guarantee is given as to their operability or efficiency can be given.  
Made with Metropac C2024