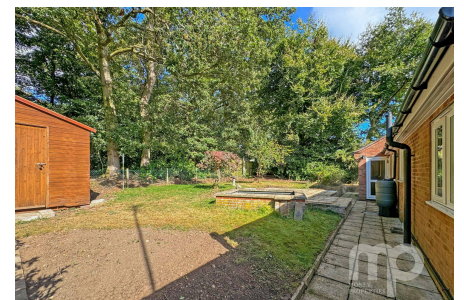


## Wood Drive, Beetley, Dereham, NR20

Offers In Region Of £275,000

 2  1  1



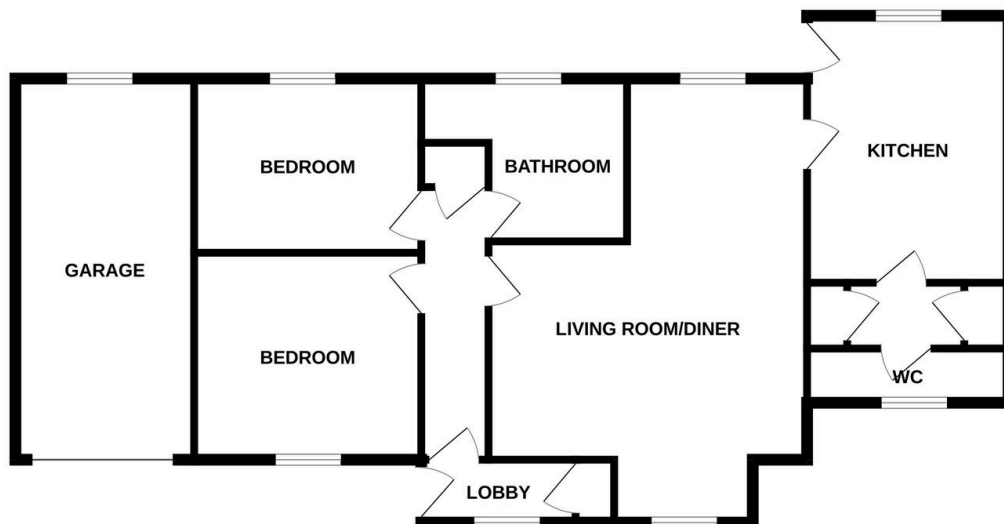
Moneyproperties are thrilled to bring to market this spacious two double bedroom detached bungalow occupying a generous plot at the end of a quiet cul de sac. The property has been extended to offer generous living accommodation and comes to market with no onward chain. This bright and airy bungalow comprises of an entrance lobby, spacious L-shaped living room/diner with bay front window, good-sized kitchen, two double bedrooms, bathroom with separate bath and shower along with an additional wc. To the outside the property enjoys a private fully enclosed rear garden with storage shed, single garage and ample off-road driveway parking.

**Tenure: Freehold EPC: D Council Tax: B**

## Key Features

- Spacious two bedroom detached bungalow
- Two double bedrooms
- Generous L-shaped living room/diner with bay front window
- Single garage with ample off-road parking
- Offered with no-onward chain
- Occupying a generous corner plot
- Extended to provide generous living accommodation
- Large, private and enclosed rear garden
- Within ease of access to Dereham town centre
- See our online listing for further details including flood risk, broadband speed and other material information.

### GROUND FLOOR



Whilst every attempt has been made to ensure the accuracy of the floorplan contained here, measurements of doors, windows, rooms and any other items are approximate and no responsibility is taken for any error, omission or mis-statement. This plan is for illustrative purposes only and should be used as such by any prospective purchaser. The services, systems and appliances shown have not been tested and no guarantee as to their operability or efficiency can be given.  
Made with Metropix ©2024