




Melton Road, Wymondham, Norfolk.

Offers In Region Of £500,000

 4  2  1



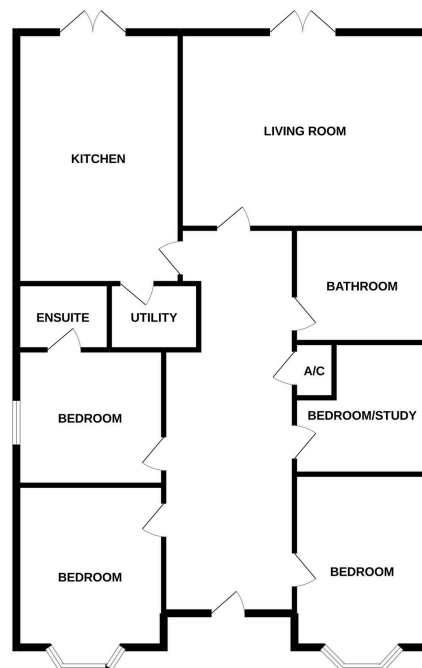
.Moneyproperties proudly present this immaculate detached 4 bedroom bungalow sitting on a generous plot approximately 145ft x 45ft with ample parking for 6 / 7 cars This detached 4 bedroom bungalow comes to market as has been renovated to high standard offering 4 double bedrooms master with en-suite, superb wet room and a 18ft 10in kitchen / breakfast room with vaulted ceiling with patio doors leading into the rear secluded landscaped 55ft x 45ft garden.

Tenure: Freehold EPC: B Council Tax: B

Key Features

- Immaculate detached four bedroom bungalow sitting on a generous 145ft x 45ft plot
- Ample parking on the front driveway for caravan, mobile home or 6/7 cars
- 18ft 10in fully equipped Kitchen with vaulted ceiling and patio doors into garden
- Desired location
- Offering approximately 1450 sq ft of living space with potential to extend
- Secluded and landscaped rear garden 55ft x 45ft with patio and grass area
- Integrated Bosch dishwasher and fridge, Stoves gas range, water softener, and utility cupboard
- Superb wet room.
- This really is a must view property that will fit in well with modern living especially those with children.
- See our full online listing for further details including flood risk, broadband speed and other material information

GROUND FLOOR



Whilst every attempt has been made to ensure the accuracy of the floorplan contained here, measurements of doors, windows, rooms and any other items are approximate and no responsibility is taken for any error, omission or mis-statement. This plan is for illustrative purposes only and should be used as such by any prospective purchaser. The services, systems and appliances shown have not been tested and no guarantee is given as to their operability or efficiency capabilities.
Made with Metropac C2022