

## Grasmere, Silfield Road, Wymondham

Offers Over £295,000

4 1 2



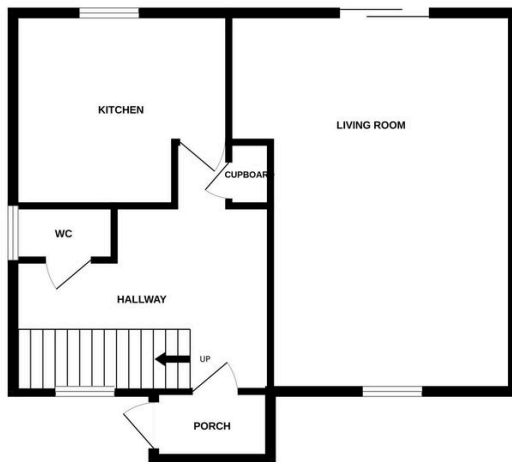
Moneyproperties present this spacious 4-bedroom semi-detached house with no forward chain so a quick sale would be possible. This property is uniquely situated on a large plot with one other property and offers approximately 1100 sq ft of living space, featuring a 22ft living room. Situated next door to the Co Op convenience store and within a two minute walk from the railway station with regular services to Norwich and Cambridge, for convenient commuting, sought-after local schools, and the town centre with all its amenities.

**Tenure: Freehold EPC: TBC Council Tax: C**

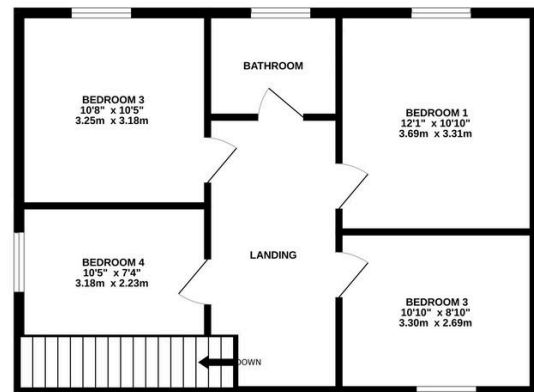
## Key Features

- Spacious four bedroom semi detached house offering approximately 1100 sq ft of living space
- Sitting on a generous 170ft x 40ft (0.15 acre) plot with a 85ft front garden and 60ft rear garden
- Newly fitted gas combi boiler and recently updated bathroom
- Walking distance from the town centre with all its amenities and local sought after schools
- Must view to fully appreciate the current property and potential for further development
- Being sold with no forward chain so a quick sale would be possible
- Huge potential for further development subject to appropriate planning permission
- Ideally situated for the railway station with regular services to Norwich and Cambridge
- Easy access to the main A11 for those commuting to Norwich and Cambridge by road
- See our online listing for further details including flood risk, broadband speed and other material information.

GROUND FLOOR



1ST FLOOR



Whilst every attempt has been made to ensure the accuracy of the floorplan contained here, measurements of doors, windows, rooms and any other items are approximate and no responsibility is taken for any error, omission or mis-statement. This plan is for illustrative purposes only and should be used as such by any prospective purchaser. The services, systems and appliances shown have not been tested and no guarantee as to their operability or efficiency can be given.  
Made with Metropix ©2024