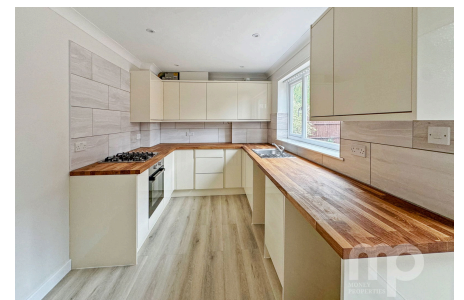


Ferguson Way, Attleborough, NR17

Offers In Region Of £275,000

3 2 1



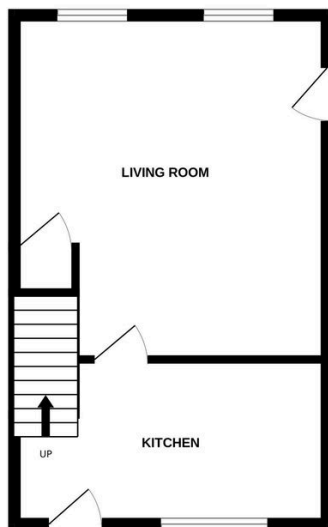
Moneyproperties proudly present this immaculately presented three bedroom semi detached house on the popular Ferguson Way with no forward chain so a quick sale is possible. The property has been renovated by the current owners who have redecorated throughout and added new floor coverings, there is also a newly fitted modern kitchen and modern bathroom, landscaped rear garden with new patio area and a converted garage offering home office space if required with off road parking for 2/3 cars. The property is well placed for schools, town centre with all its amenities, and railway station with regular services to Norwich and Cambridge.

Tenure: Freehold EPC: C Council Tax: B

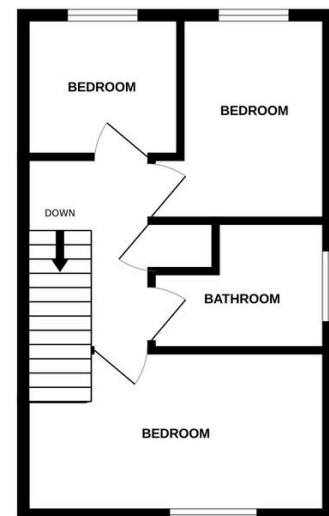
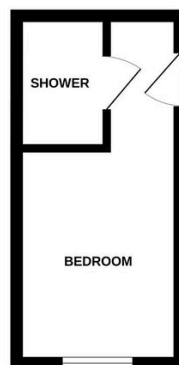
Key Features

- Immaculately presented three bedroom semi detached house
- Newly fitted modern kitchen and modern bathroom
- Landscaped rear garden with new patio area
- Easy access to the main A11 for those commuting to Norwich and Cambridge by car
- Attleborough has Primary and High schools and a railway station with regular services
- The current owner has decorated throughout and added new floor coverings
- Garage has been converted to provide office space if required
- Off road parking to the front of the house for 2/3 cars
- Minutes from Attleborough town centre with all its amenities
- See our full online listing for further details including flood risk, broadband speed and other material information.

GROUND FLOOR



1ST FLOOR



Whilst every attempt has been made to ensure the accuracy of the floorplan contained here, measurements of doors, windows, rooms and any other items are approximate and no responsibility is taken for any error, omission or mis-statement. This plan is for illustrative purposes only and should be used as such by any prospective purchaser. The services, systems and appliances shown have not been tested and no guarantee as to their operability or efficiency can be given.
Made with Metropix ©2024