

## Oak Tree Park, Attleborough, NR17

Guide Price £145,000

2 2 1

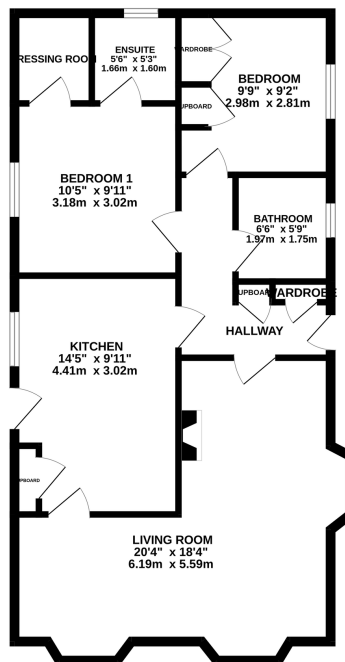


Moneyproperties bring to market this well-presented two-bedroom park home on the sought after over 45s residential development on the outskirts of Attleborough town centre. Offering bright and airy living throughout with modern interior. The accommodation comprises of a spacious bay fronted L-shaped living room/diner with feature fireplace, kitchen, two double bedrooms with an ensuite and dresser to bedroom one and a bathroom. To the outside comes a wrap around low-maintenance rear garden providing the perfect sun trap. Further benefits include off-road parking for x2 cars.

## Key Features

- Well-presented two bedroom park home
- 18ft bay fronted L-shaped living room/ diner
- Popular over 45s residential development
- Close to nearby local amenities and bus routes
- Must be viewed!!!
- Two double bedrooms with an ensuite and dresser to bedroom one
- Low maintenance rear garden providing the perfect sun trap
- Off-road parking for x2 cars
- Ease of access to the A11 towards Norwich, Cambridge and London
- See our online listing for further details including flood risk, broadband speed and other material information.

GROUND FLOOR



Whilst every attempt has been made to ensure the accuracy of the floorplan contained here, measurements of doors, windows, rooms and any other items are approximate and no responsibility is taken for any error, omission or mis-statement. This plan is for illustrative purposes only and should be used as such by any prospective purchaser. The services, systems and appliances shown have not been tested and no guarantee is given as to their operability or efficiency can be given.  
Made with Metropac C2024