

Pages Close, Wymondham, NR18

Offers In Region Of £155,000

1 1 1

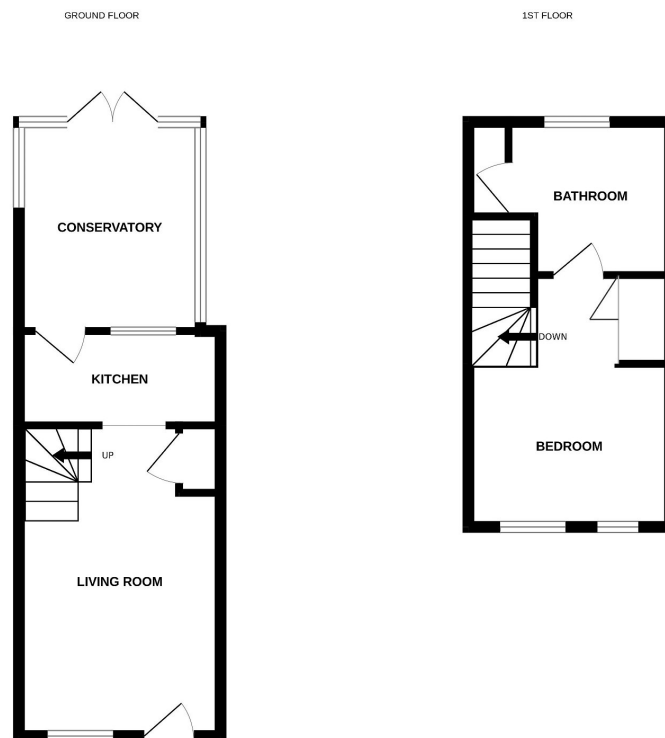


Moneyproperties bring to market this spacious one-bedroom terraced house being sold with no onward chain as tenant has served notice. The property is located in a quiet cul de sac within walking distance from the town centre, local railway station and easy access to the A11 for commuting. This one-bedroom property offers approximately 550 sq ft of living space which has been enhanced by adding a conservatory which gives access to the rear fully enclosed garden. The property benefits from a spacious living room with spiral staircase and storage cupboard, kitchen, generous bedroom, and bathroom. Allocated parking for x2 cars.

Tenure: Freehold EPC: D Council Tax: A

Key Features

- Spacious one-bedroom terraced house
- Quiet Cul de sac location
- Allocated off-road parking for x2 cars
- Fully enclosed rear garden
- Spacious conservatory
- 15ft living room leading to the kitchen
- Offering approximately 550sq ft of living space
- Being sold with no onward chain as tenant is vacating
- Within walking distance to the town centre and local train station
- See our full online listing for further details including flood risk, broadband speed and other material information.



Whilst every attempt has been made to ensure the accuracy of the floorplans contained herein, measurements of doors, windows, rooms and any other items are approximate and no responsibility is taken for any errors, omissions or mis-statements. This plan is for illustrative purposes only and should be used in conjunction with any prospective purchase. The services, systems and appliances shown have not been tested and no guarantee as to their operability or efficiency can be given.
Made with Metropix ©2024