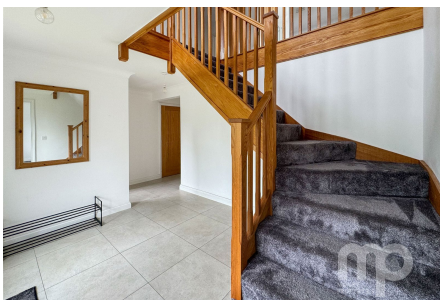


## Norwich Road, Besthorpe, NR17

Offers In Region Of £475,000

4 3 3



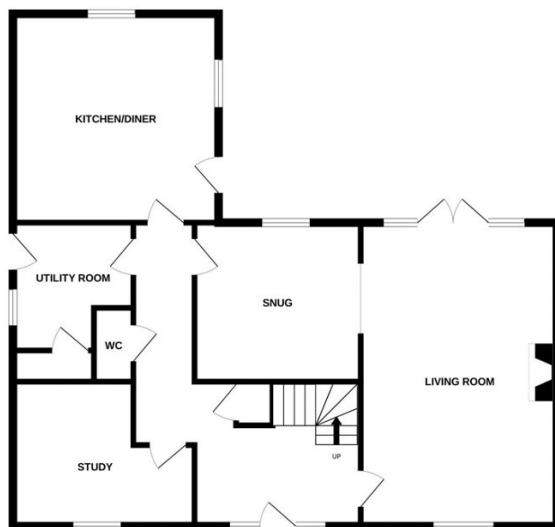
Moneyproperties proudly bring to market this executive style four-bedroom detached family home offering approximately 2500 square ft of living space and positioned within a private cul de sac minutes from the sought after Wymondham College. This immaculate home was bought from new in 2018 by the current vendor with underfloor heating downstairs and radiators upstairs. Stylish and modern interior throughout the property comprises of an impressive solid oak staircase, 21ft living room leading to the separate snug, generous kitchen/diner, utility room, and a study ideal for working from home, four double bedrooms, two with ensembles.

**Tenure: Freehold EPC: B Council Tax: F**

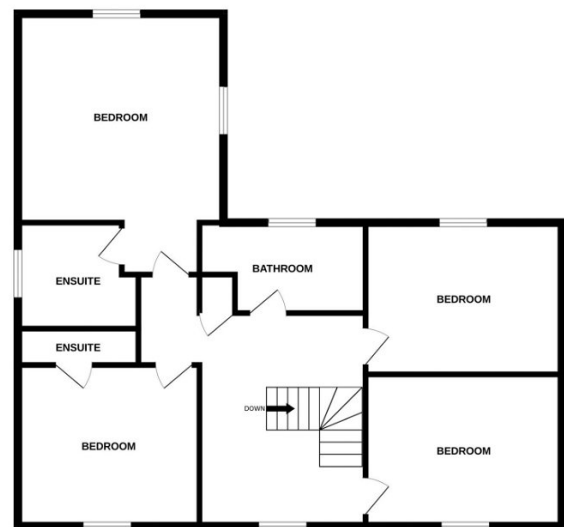
## Key Features

- Executive style four bedroom detached family home
- Four double bedrooms, two with ensuites
- 21ft dual aspect living room with brick exposed fireplace
- Driveway parking with double garage
- Front and rear gardens. Comes to market with no-onward chain
- Stylish and modern interior throughout
- Minutes from the sought after Wymondham College
- Downstairs study ideal for working from home
- Air source heat pump with underfloor heating downstairs and radiators upstairs
- See our online listing for further details including flood risk, broadband speed and other material information

GROUND FLOOR



1ST FLOOR



Whilst every attempt has been made to ensure the accuracy of the floorplan contained here, measurements of doors, windows, rooms and any other items are approximate and no responsibility is taken for any error, omission or mis-statement. This plan is for illustrative purposes only and should be used as such by any prospective purchaser. The services, systems and appliances shown have not been tested and no guarantee as to their operability or efficiency can be given.  
Made with Metropix ©2024