

## Appletree Close, Attleborough, NR17

£188,500

2 2 2



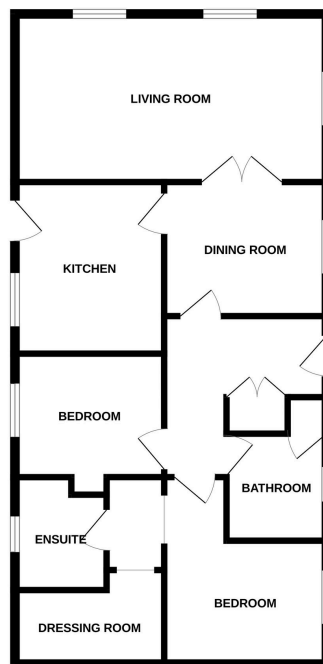
Moneyproperties brings to market this immaculately presented two-bedroom luxury park home on the sought after over 45s residential development within close proximity to Attleborough town centre. This spacious property benefits from bright and airy living throughout and comprises of an entrance hall, 19ft bay fronted living room, separate dining room, modern kitchen, and shower room. The property also benefits from two double bedrooms with an ensuite and walk in wardrobe to bedroom one. To the outside comes a picturesque landscaped wraparound rear garden and off-road parking for x2 cars.

**Tenure: Freehold EPC: N/A Council Tax: A**

## Key Features

- Two bedroom luxury park home
- Two double bedrooms
- Ensuite and walk in wardrobe to bedroom one
- Popular over 45s development
- Located within close proximity to the town centre, local bus routes and the A11
- Council tax band A and monthly service charge/ground rent £189
- Off-road parking for x2 cars
- 19ft dual aspect living room
- Picturesque landscaped garden
- No onward chain!!!

GROUND FLOOR



Whilst every attempt has been made to ensure the accuracy of the floorplan contained here, measurements of doors, windows, rooms and any other items are approximate and no responsibility is taken for any error, omission or mis-statement. This plan is for illustrative purposes only and should be used as such by any prospective purchaser. The services, systems and appliances shown have not been tested and no guarantee is given as to their operability or efficiency over time.  
Made with Metropac C2023