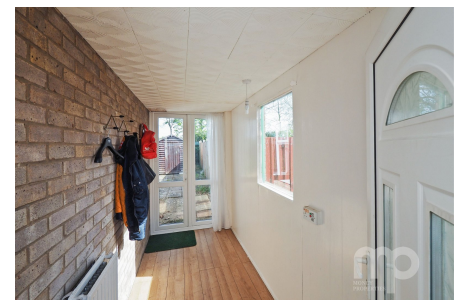


Rothbury Road, Wymondham, Norfolk, NR18 0PD

Offers In Region Of £270,000

🛏 2 🍴 1 🚗 1

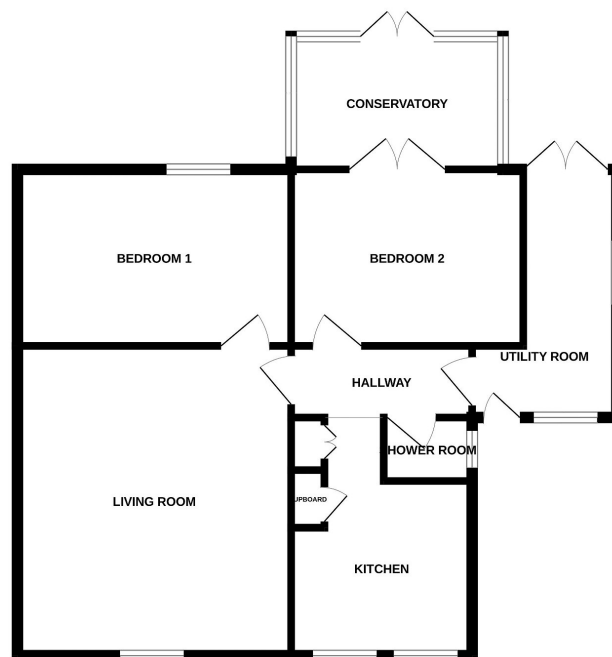


Step into the charming semi-detached two-bedroom bungalow presented by Moneyproperties, ideally situated within walking distance from the vibrant town center. Boasting a prime location with easy access to all amenities and convenient transportation links to Norwich and Cambridge, this residence offers the perfect blend of accessibility and tranquility. Offered with no forward chain, this property presents a rare opportunity for a quick and hassle-free sale. **Tenure: Freehold EPC: D Council Tax: B**

Key Features

- Charming two bedroom semi detached bungalow
- Offering approximately 800 sq ft of living space
- Plot size approximately 100ft x 35ft with secluded rear garden backing onto school fields
- Walking distance from sought after local schools
- Close to the towns train station with regular services to Norwich and Cambridge
- No forward chain / quick sale possible
- Updated kitchen, bathroom, conservatory and gas central heating boiler
- Sought after location close to the town centre with all its amenities
- Easy access to the main A11 for those commuting by road
- Freehold, EPC rating D, Council tax banding B

GROUND FLOOR



Whilst every attempt has been made to ensure the accuracy of the floorplan contained here, measurements of doors, windows, rooms and any other items are approximate and no responsibility is taken for any error, omission or misstatement. This plan is for illustrative purposes only and should be used as such by any prospective purchaser. The services, systems and appliances shown have not been tested and no guarantee as to their operability or efficiency can be given.
Made with Metropac 02024