


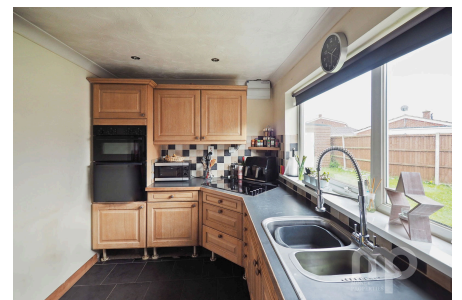


Maple Close, Wymondham, Norfolk, NR18 0HP

Offers In Region Of £330,000

 3  2  2



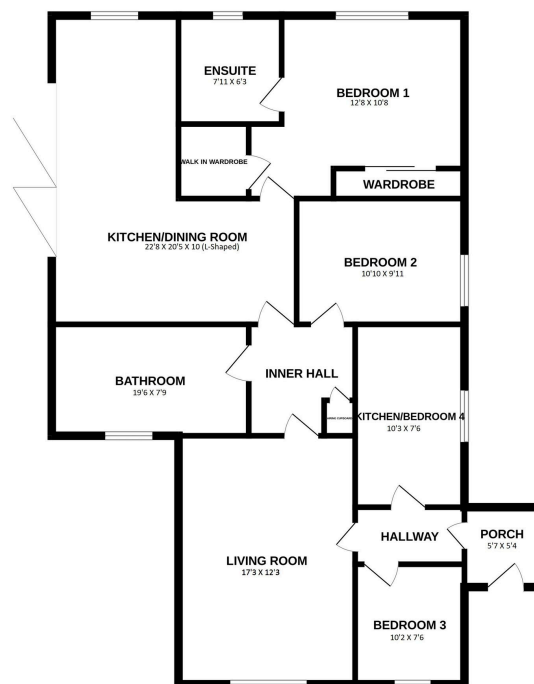
Introducing an exciting opportunity from Moneyproperties - a detached bungalow with immense potential, nestled on a spacious 0.20 acre plot with a large oversized garage. This property, boasting the possibility of four bedrooms, is waiting to be transformed into your dream home. With approximately 1400 sq ft of living space, this bungalow offers a promising canvas for customisation.

Tenure: Freehold EPC: D Council Tax: C

Key Features

- Detached bungalow with potentially four bedrooms
- The extension is completed with electrics including underfloor heating awaiting second fixings, 3 meter bi fold are installed at the bottom of the close walking distance from sought after local schools and shops
- Ample parking for cars and caravan on driveway and large oversized garage
- Gas supply on the corner of the bungalow needs connecting up, currently on Oil fired central heating
- The property is unfinished due to the current owners circumstances
- The property sits on a generous 0.20 acre plot so further extension would be possible (stpp)
- Easy access to the main A11 for those commuting to work by road
- Must view to fully appreciate the properties potential
- See our online listing for further details regarding flood risk, broadband speed and other material information.

GROUND FLOOR



Whilst every attempt has been made to ensure the accuracy of the floorplan contained here, measurements of doors, windows, rooms and any other items are approximate and no responsibility is taken for any error, omission or misstatement. This plan is for illustrative purposes only and should be used as such by any prospective purchaser. The services, systems and appliances shown have not been tested and no guarantee as to their operability or efficiency can be given.
Made with Metropix C2024