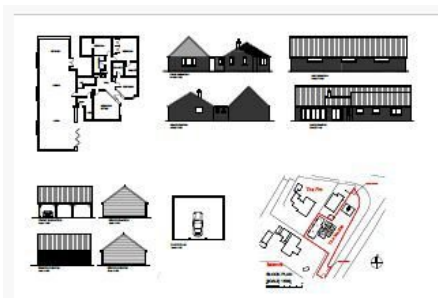


Norwich Road, Ashwellthorpe, Norwich, Norfolk, NR16 1EL

Guide Price £325,000

2 1 3



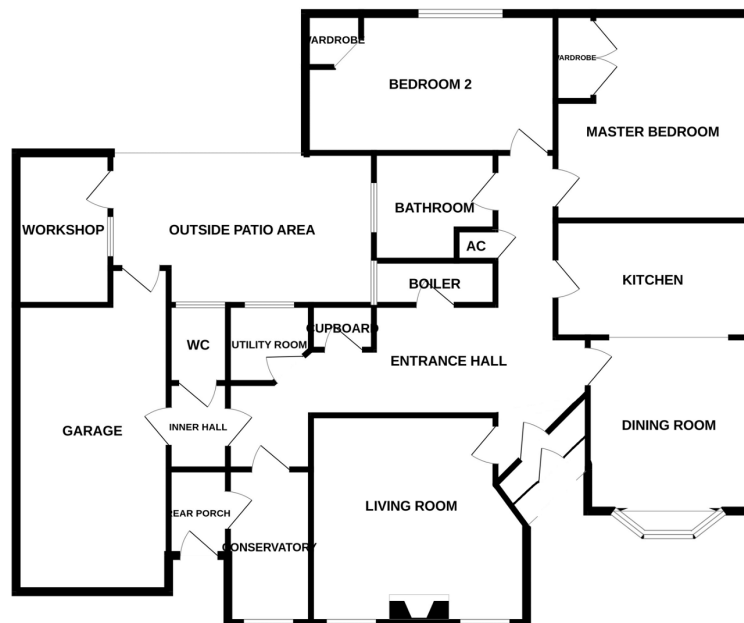
EXCITING DEVELOPMENT OPPORTUNITY ! GUIDE PRICE £325,000-£350,000. This two bedroom detached and secluded bungalow sitting on 0.30 acre has planning permission granted for an extension to create four bedrooms with open plan living/kitchen/diner and cartlodge. The property has huge potential for further development due to the size of the plot and the current two bedroom dwelling could quite easily be made into a four bedroom property. The current property offers approximately 1200 sq ft of living space.

Tenure: Freehold EPC: E Council Tax: C

Key Features

- Detached and secluded two bedroom bungalow with PLANNING PERMISSION FOR EXTENSION.
- Sitting on 0.30 acre plot (potential building plot stpp)
- No forward chain / quick sale possible
- Potential for 4 bedrooms
- Easy access to Norwich and Cambridge
- EXCITING DEVELOPMENT OPPORTUNITY !! **GUIDE PRICE £325,000-£350,000 **
- Close to sought after schools
- Private gated drive allowing parking for numerous cars and outside undercover entertainment area
- Huge potential to double the size of the existing property
- See our online listing for further details regarding flood risk, broadband speed and other material information.

GROUND FLOOR



Whilst every attempt has been made to ensure the accuracy of the floorplan contained here, measurements of doors, windows, rooms and any other items are approximate and no responsibility is taken for any error, omission or mis-statement. This plan is for illustrative purposes only and should be used as such by any prospective purchaser. The services, systems and appliances shown have not been tested and no guarantee as to their operability or efficiency can be given.
Made with Metropix ©2023