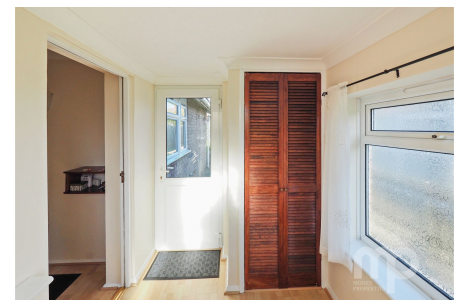


Orchard Way, Wymondham, Norfolk

Offers In Region Of £280,000

3 1 1

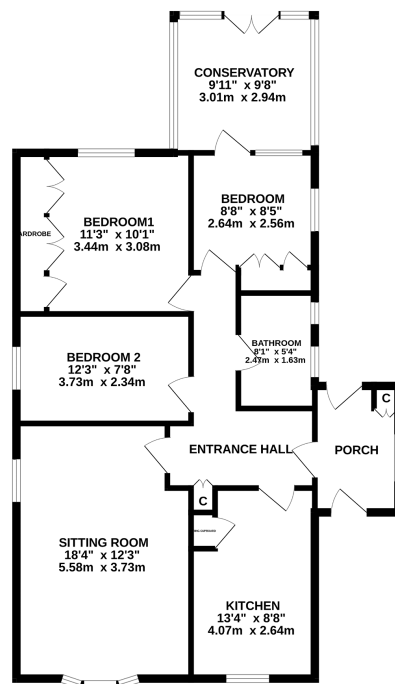


GUIDE PRICE £300,000-£325,000. Moneyproperties are delighted to offer this well presented detached three bedroom bungalow walking distance from the town centre with all its amenities. This well presented three bedroom bungalow offers approximately 1000 sq ft of living space and comprises of side lobby, entrance hall, kitchen, 17ft 10in living room with bay window, shower room, three bedrooms, two with fitted wardrobes, one leading into conservatory and rear garden. **Tenure: Freehold EPC: E Council Tax: C**

Key Features

- Well presented detached bungalow with a GUIDE PRICE of £300,000-£325,000
- Sitting on a generous 120ft x 40ft with an additional 15ft x 45ft to the front of the property
- 17ft 10in living room with bay window overlooking front garden with mature trees
- Close to sought after local schools, supermarkets and the towns railway station
- No forward chain / quick sale possible
- Offering approximately 1000 sq ft of living space, with en bloc garage and off road parking
- Three bedrooms two with built in wardrobes one leading into conservatory
- Walking distance from the town centre with all its amenities
- Easy access to the main A11 for those commuting to work in Norwich and Cambridge by road
- Freehold, Council tax band C, EPC - E

GROUND FLOOR



Whilst every attempt has been made to ensure the accuracy of the floorplan contained here, measurements of doors, windows, rooms and any other items are approximate and no responsibility is taken for any error, omission or mis-statement. This plan is for illustrative purposes only and should be used as such by any prospective purchaser. The services, systems and appliances shown have not been tested and no guarantee is given as to their operability or efficiency can be given.
Made with Metropac C3224