

Exige Way, Wymondham, NR18

Offers In Region Of £275,000

3 2 1



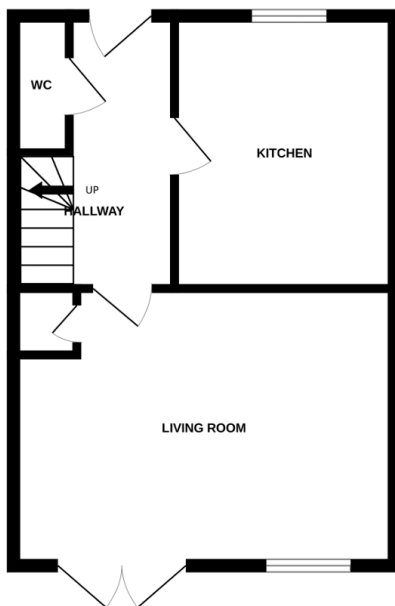
Moneyproperties bring to market this well-presented three-bedroom end of terraced house in a quiet cul de sac, close proximity to the town centre and amenities, railway station and within ease of access to the A11 for commuting. The property comprises of a spacious kitchen/diner, 16ft living room with French doors leading to the rear garden and a downstairs wc. To the upstairs comes two double bedrooms with an ensuite to bedroom one, a spacious single bedroom and a family bathroom. Outside there is a low maintenance rear garden, single garage that has been adapted to provide a home office to the rear and off-road parking.

Tenure: Freehold EPC :C Council tax: C

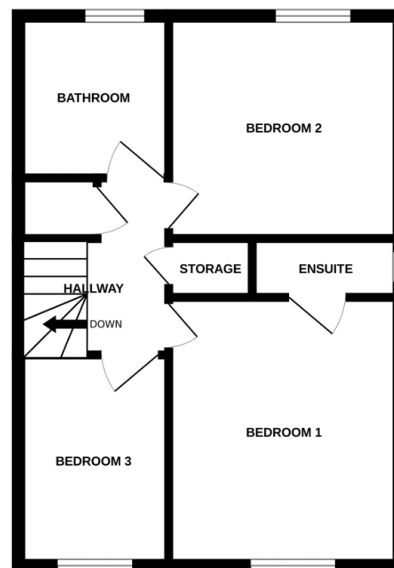
Key Features

- Well-presented three bedroom end of terraced house
- Secluded rear garden
- Spacious kitchen/diner
- Walking distance to the town centre and all its amenities
- Converted garage containing a study to the rear
- Two double bedrooms with an ensuite to bedroom one
- 16ft living room with french doors leading to the rear garden
- Minutes from the towns railway station with regular links to Norwich and Cambridge
- Quiet cul de sac location with Off-road parking
- Council tax Band C, EPC C, Freehold

GROUND FLOOR



1ST FLOOR



Whilst every attempt has been made to ensure the accuracy of the floorplan contained here, measurements of doors, windows, rooms and any other items are approximate and no responsibility is taken for any error, omission or mis-statement. This plan is for illustrative purposes only and should be used as such by any prospective purchaser. The services, systems and appliances shown have not been tested and no guarantee as to their operability or efficiency can be given.
Made with Metropix ©2023