

Fairland Court, Fairland Street, Wymondham

Guide Price £120,000

1 bed 1 bath 1 car

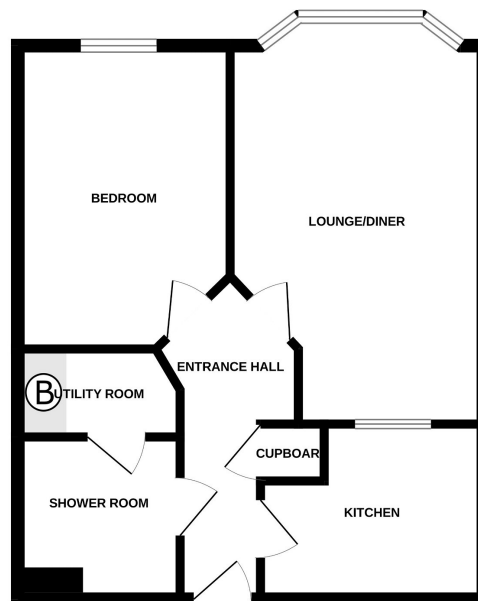


*****GUIDE PRICE £120,000-£140,000***** Moneyproperties bring to market this spacious one bedroom retirement apartment within walking distance to the town centre and amenities as well as the local train station with direct links to Norwich and Cambridge. The apartment is on the first floor of this three-floor retirement property. There is a stair and lift service to each floor and a 24-hour emergency Appello call system for when the Development Manager is off duty, a guest suite, communal lounge, conservatory, and library. The apartment itself comprises of a kitchen, living room, double bedroom, and shower room. Management fees may apply to this property. **Tenure: Leasehold EPC: B Council Tax: B**

Key Features

- Spacious one bedroom retirement property
- Located within walking distance to the town centre and all its amenities
- Visiting development manager
- Lift access to all floors
- Guest suite
- Minimum age of 55
- Secure electric fob access and gated parking area
- 24 hour emergency Appello call system
- Communal lounge, conservatory and library
- EPC rating B, Council tax band B, Leasehold

GROUND FLOOR



Whilst every attempt has been made to ensure the accuracy of the floorplan contained here, measurements of doors, windows, rooms and any other items are approximate and no responsibility is taken for any error, omission or mis-statement. This plan is for illustrative purposes only and should be used as such by any prospective purchaser. The services, systems and appliances shown have not been tested and no guarantee is to their operability or efficiency can be given.
Made with Metropix ©2023