

TO LET

- Two bedrooms
- First floor flat
- Modern kitchen
- Spacious living room
- Modern bathroom
- Double glazing/gas central heating
- Secure communal entrance
- Close to shops/station

Anthony Webb

Lodge Drive, Palmers Green, London, N13
£1,550

Anthony Webb
ESTATE AGENTS

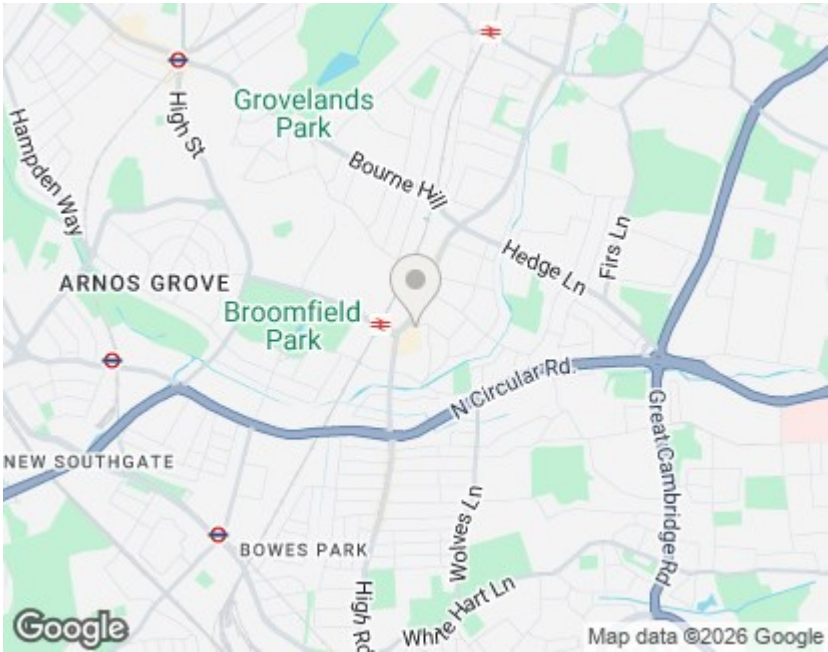
Lodge Drive, Palmers Green, London, N13

Unfurnished Two bedroom converted flat occupying the first floor of this Edwardian property offering a spacious living space, modern kitchen, modern bathroom and off street parking.

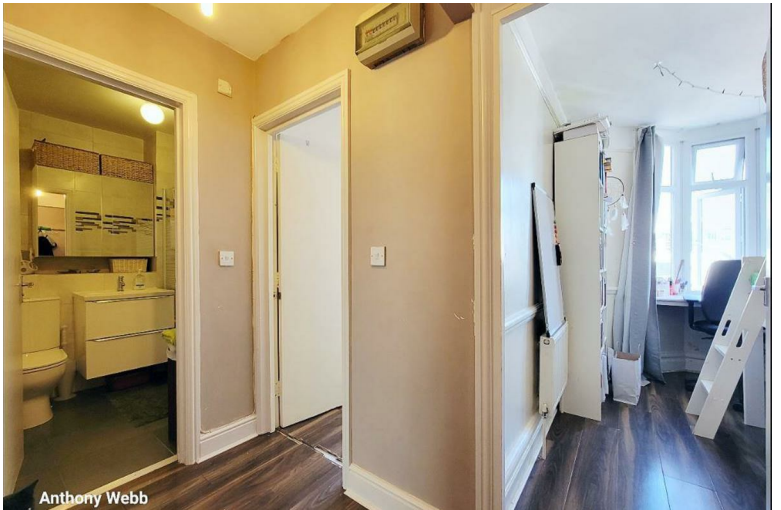
Lodge Drive is a popular residential turning off Green Lanes within a few minutes walk of Palmers Greens shops, restaurants, bus routes and mainline station into Moorgate. There are numerous green spaces/walks within easy reach including The New River, Hazelwood recreation ground and Broomfield Park.

- Secure communal entrance with original tessellated tiled floor and entry phone system
- Living room with feature fireplace
- Modern fitted kitchen
- Double bedroom with large bay window
- Single second bedroom with bay window
- Modern bathroom
- Gas central heating
- Double glazing
- Parking space to front

Enfield Council Tax Band C
5 Weeks Security Deposit- £46,500
Minimum annual household income to meet referencing criteria £46,500



Energy Efficiency Rating		
	Current	Potential
Very energy efficient - lower running costs		
(92 plus) A		
(81-91) B		
(69-80) C		
(55-68) D		
(39-54) E		
(21-38) F		
(1-20) G		
Not energy efficient - higher running costs		
	75	82
England & Wales EU Directive 2002/91/EC		
Environmental Impact (CO ₂) Rating		
	Current	Potential
Very environmentally friendly - lower CO ₂ emissions		
(92 plus) A		
(81-91) B		
(69-80) C		
(55-68) D		
(39-54) E		
(21-38) F		
(1-20) G		
Not environmentally friendly - higher CO ₂ emissions		
England & Wales EU Directive 2002/91/EC		



348 Green Lanes, Palmers Green, London N13 5TJ
020 8882 7888
palmersgreen@anthonywebb.co.uk
anthonywebb.co.uk