



15 Church Lane, Enfield, EN1  
Guide Price £450,000 Freehold

**Anthony Webb**  
ESTATE AGENTS



# 15 Church Lane, Enfield, EN1

CASH BUYERS ONLY required for this CHAIN FREE three bedroom detached ex-school care takers house located next to Enfield County School for girls. All offers must be received by the 17th of December and the exchange will be required by mid January 2026.

The property consists of a spacious reception with dual aspect windows and doors to garden, kitchen, two double bedrooms, a good size single bedroom, first floor family bathroom, gas central heating (untested), double glazing and private rear garden.

Enfield Council Tax Band T.B.C

- Ex School caretakers house
- Three bedrooms
- Detached
- Spacious reception
- Kitchen
- Bathroom
- Double glazing/gas central heating
- Rear garden







Anthony Webb



Anthony Webb



Anthony Webb



Anthony Webb



15 Church Lane  
Enfield  
EN1 3EJ

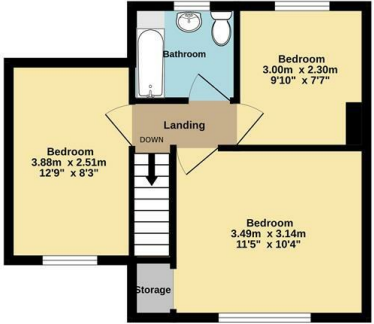
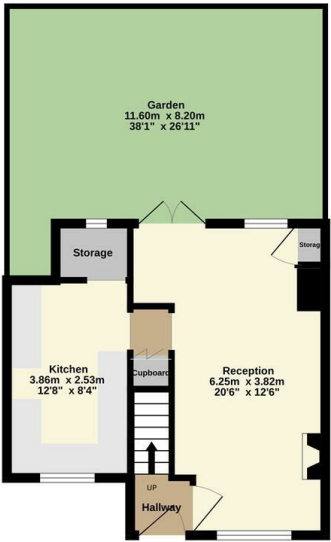
Tenure: Freehold  
Gross Internal Area: 1035.00 sq ft



Energy Efficiency Rating		
	Current	Potential
Very energy efficient - lower running costs		
(92 plus) A		
(81-91) B		
(69-80) C		
(55-68) D		
(39-54) E		
(21-38) F		
(1-20) G		
Not energy efficient - higher running costs		
England & Wales EU Directive 2002/91/EC		
Environmental Impact (CO <sub>2</sub> ) Rating		
	Current	Potential
Very environmentally friendly - lower CO <sub>2</sub> emissions		
(82 plus) A		
(61-81) B		
(50-60) C		
(35-49) D		
(21-34) E		
(11-20) F		
(1-10) G		
Not environmentally friendly - higher CO <sub>2</sub> emissions		
England & Wales EU Directive 2002/91/EC		

Ground floor  
49.0 sq.m. (527 sq.ft.) approx.

1st floor  
47.2 sq.m. (508 sq.ft.) approx.



TOTAL FLOOR AREA: 96.2 sq.m. (1035 sq.ft.) approx.  
Whilst every attempt has been made to ensure the accuracy of the floorplans contained here, measurements of doors, windows, rooms and any other items are approximate and no responsibility is taken for any error, omission or mis-statement. This plan is for illustrative purposes only and should be used as such by any prospective purchaser. The services, systems and appliances shown have not been tested and no guarantee as to their operability or efficiency can be given.  
Made with Metapix ©2025

Property particulars as supplied by Anthony Webb Estate Agents are set out as a general outline in accordance with the Property Misdescriptions Act (1991) only for the guidance of intending purchasers of lessees, and do not constitute any part of an offer or contract. Details are given without any responsibility, and any intending purchasers, lessees or third parties should not rely on them as inspection or otherwise as to the correctness of each of them. We have not carried out a structural survey and the services, appliances and specific fittings have not been tested. All photographs, measurements, floor plans and distances referred to are given as a guide only and should not be relied upon for the purchase of carpets or any other fixtures statements or representations of fact, but must satisfy themselves by or of fittings, gardens, roof terraces, balconies and communal gardens as well as tenure and lease details cannot have their accuracy guaranteed for intending purchasers. Lease details, service ground rent (where applicable) are given as a guide only and should be checked and confirmed by your solicitor prior to exchange of contracts. no person in the employment of Anthony Webb has any authority to make any representation or warranty whatever in relation to this property.

348 Green Lanes, Palmers Green, London N13 5TJ  
020 8882 7888  
palmersgreen@anthonywebb.co.uk  
anthonywebb.co.uk

