



Lodge Drive, Palmers Green, London, N13  
Offers In Excess Of £325,000 Leasehold

**Anthony Webb**  
ESTATE AGENTS



# Lodge Drive, Palmers Green, London, N13

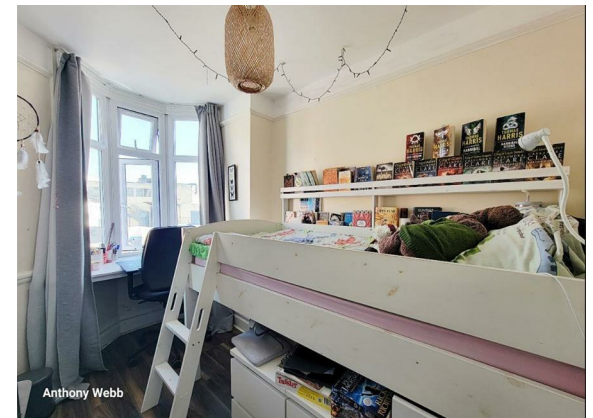
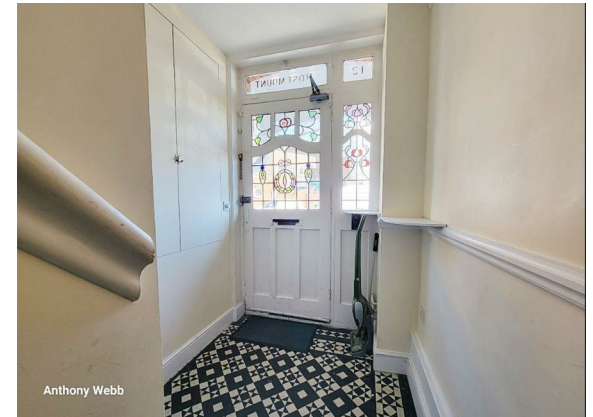
CHAIN FREE Two bedroom converted flat occupying the first floor of this Edwardian property offering a spacious living space, modern kitchen, modern bathroom and off street parking.

Lodge Drive is a popular residential turning off Green Lanes within a few minutes walk of Palmers Greens shops, restaurants, bus routes and mainline station into Moorgate. There are numerous green spaces/walks within easy reach including The New River, Hazelwood recreation ground and Broomfield Park.

Secure communal entrance with original tessellated tiled floor and entry phone system • Living room with feature fireplace • Modern fitted kitchen • Double bedroom with large bay window • Single second bedroom with bay window • Modern bathroom • Gas central heating • Double glazing • Parking space to front .

106 year lease remaining- Option to purchase a share of the freehold.  
Service charge/ground rent-N/A  
Enfield Council Tax Band C

- Two bedrooms
- First floor flat
- Modern kitchen
- Spacious living room
- Modern bathroom
- Double glazing/gas central heating
- Secure communal entrance
- Close to shops/station

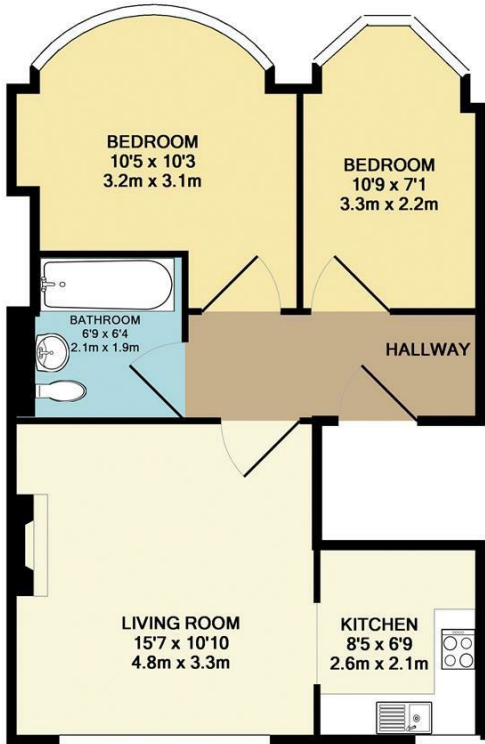
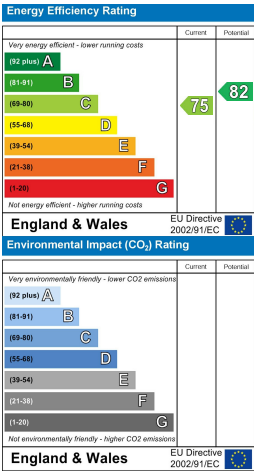






Lodge Drive  
Palmers Green  
London  
N13 5LB

Tenure: Leasehold  
Gross Internal Area: 614.00 sq ft



TOTAL APPROX. FLOOR AREA 614 SQ.FT. (57.0 SQ.M.)  
Whilst every attempt has been made to ensure the accuracy of the floor plan contained here, measurements of doors, windows, rooms and any other items are approximate and no responsibility is taken for any error, omission, or mis-statement. This plan is for illustrative purposes only and should be used as such by any prospective purchaser. The services, systems and appliances shown have not been tested and no guarantee as to their operability or efficiency can be given  
Made with Metropix ©2016

Property particulars as supplied by Anthony Webb Estate Agents are set out as a general outline in accordance with the Property Misdescriptions Act (1991) only for the guidance of intending purchasers of lessees, and do not constitute any part of an offer or contract. Details are given without any responsibility, and any intending purchasers, lessees or third parties should not rely on them as inspection or otherwise as to the correctness of each of them. We have not carried out a structural survey and the services, appliances and specific fittings have not been tested. All photographs, measurements, floor plans and distances referred to are given as a guide only and should not be relied upon for the purchase of carpets or any other fixtures statements or representations of fact, but must satisfy themselves by or of fittings, gardens, roof terraces, balconies and communal gardens as well as tenure and lease details cannot have their accuracy guaranteed for intending purchasers. Lease details, service ground rent (where applicable) are given as a guide only and should be checked and confirmed by your solicitor prior to exchange of contracts. no person in the employment of Anthony Webb has any authority to make any representation or warranty whatever in relation to this property.

348 Green Lanes, Palmers Green, London N13 5TJ  
020 8882 7888  
palmersgreen@anthonywebb.co.uk  
anthonywebb.co.uk

Anthony Webb  
ESTATE AGENTS